

RASTER

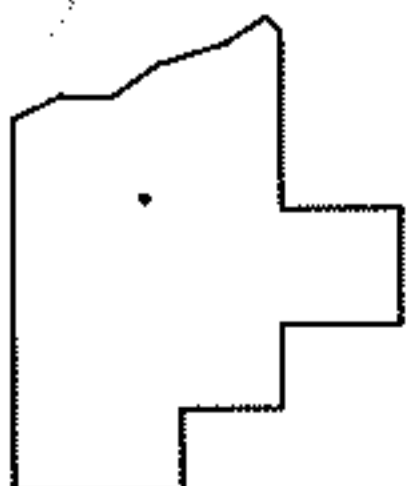
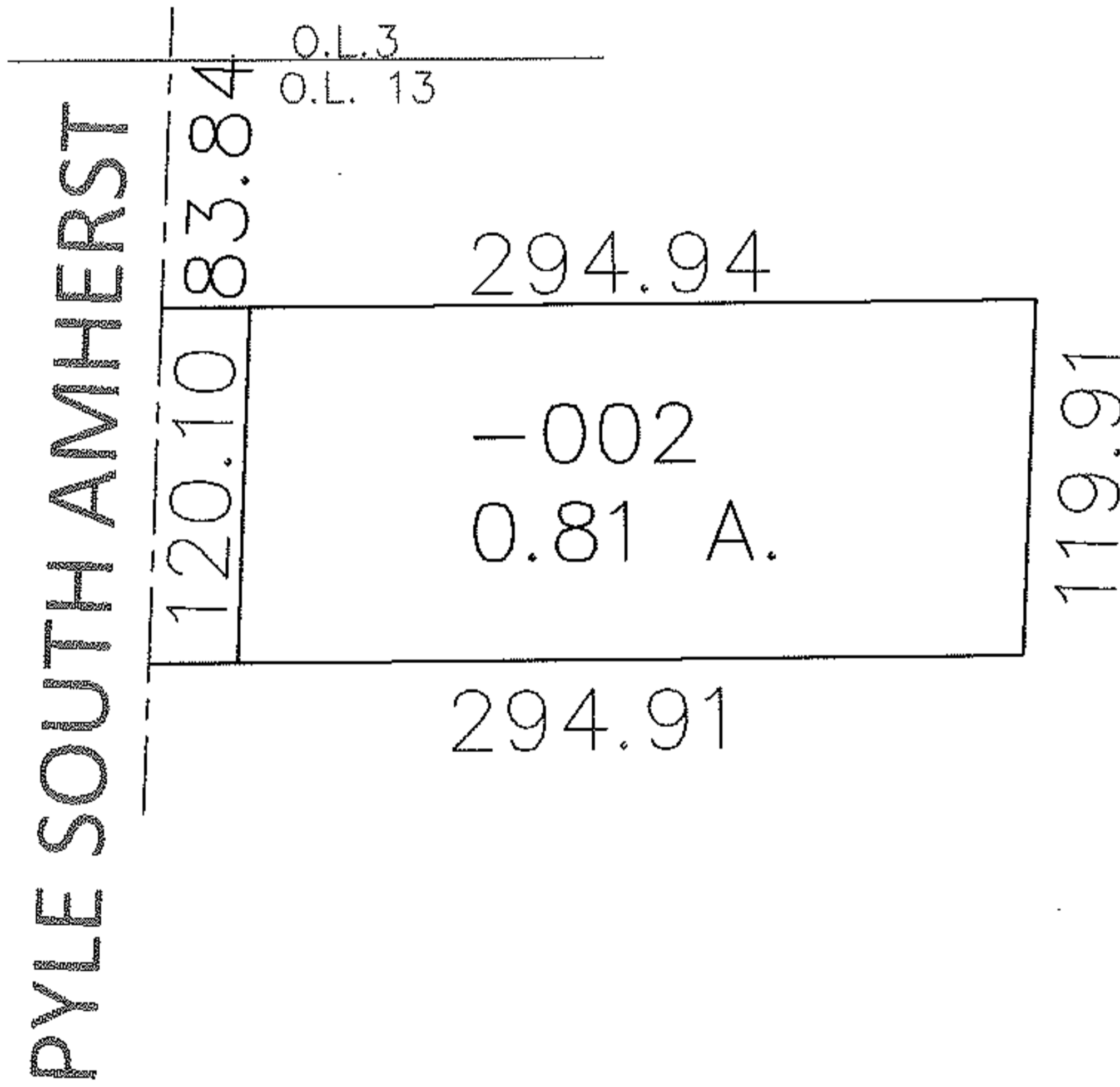
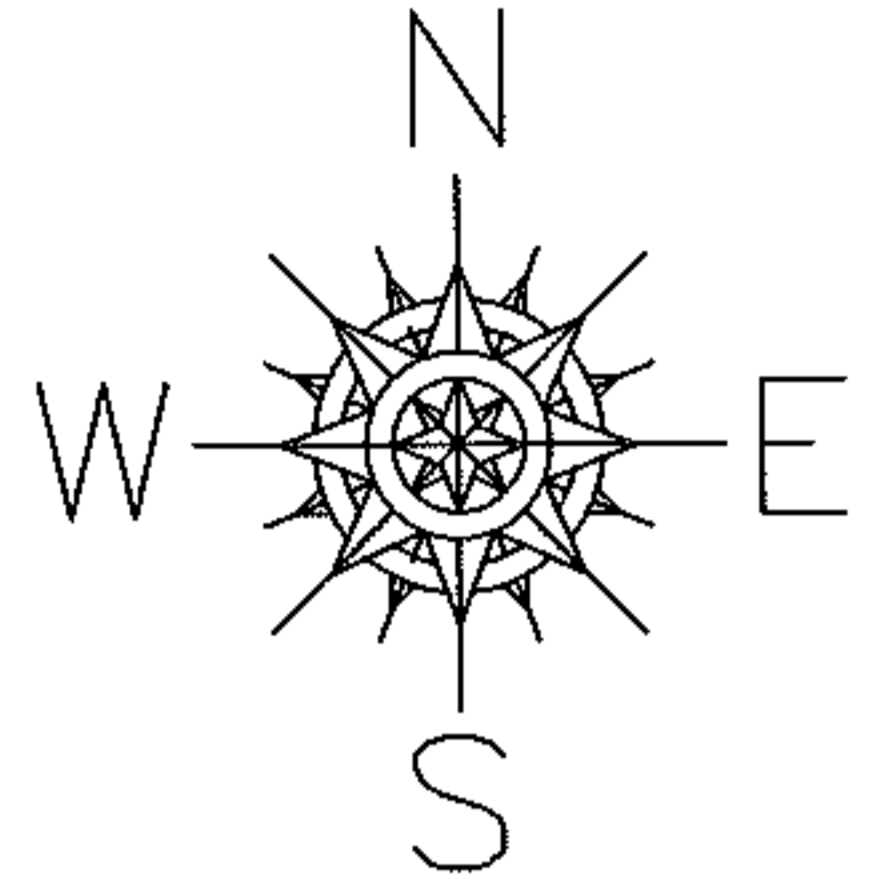
PARENT PARCEL: 09-00-013-102-002

CHILD PARCEL: --SAME--

STARTING POINT: INT CL PYLE SOUTH AMHERST AND N LINE O.L. 13

09-01891-C

MAP CORR ONLY



SPLITS/DEEDS PROCESSED
 LORAIN COUNTY TAX MAP DEPARTMENT
 226 MIDDLE AVE. ELYRIA, OHIO

SURVEYED BY: TIMOTHY J. BRIGGS
 CLOSURE: 1:10,000
 MAP PAGE(S): 09-00-013-B
 APPROVED BY: DRH DATE: 9/23/2009
 SCALE: 1" = 100' PRIOR INSTRUMENT: 1999-0606508