

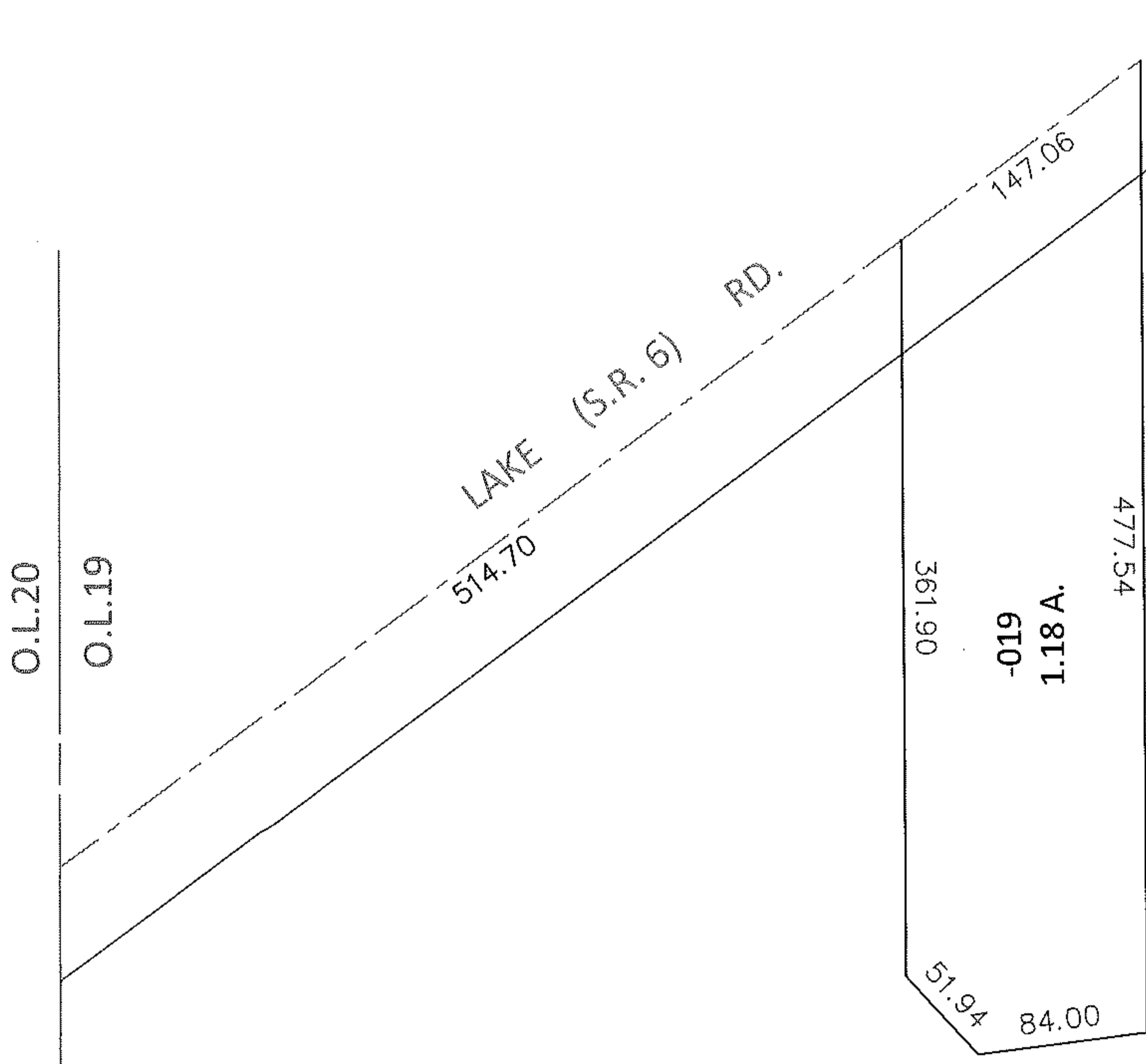
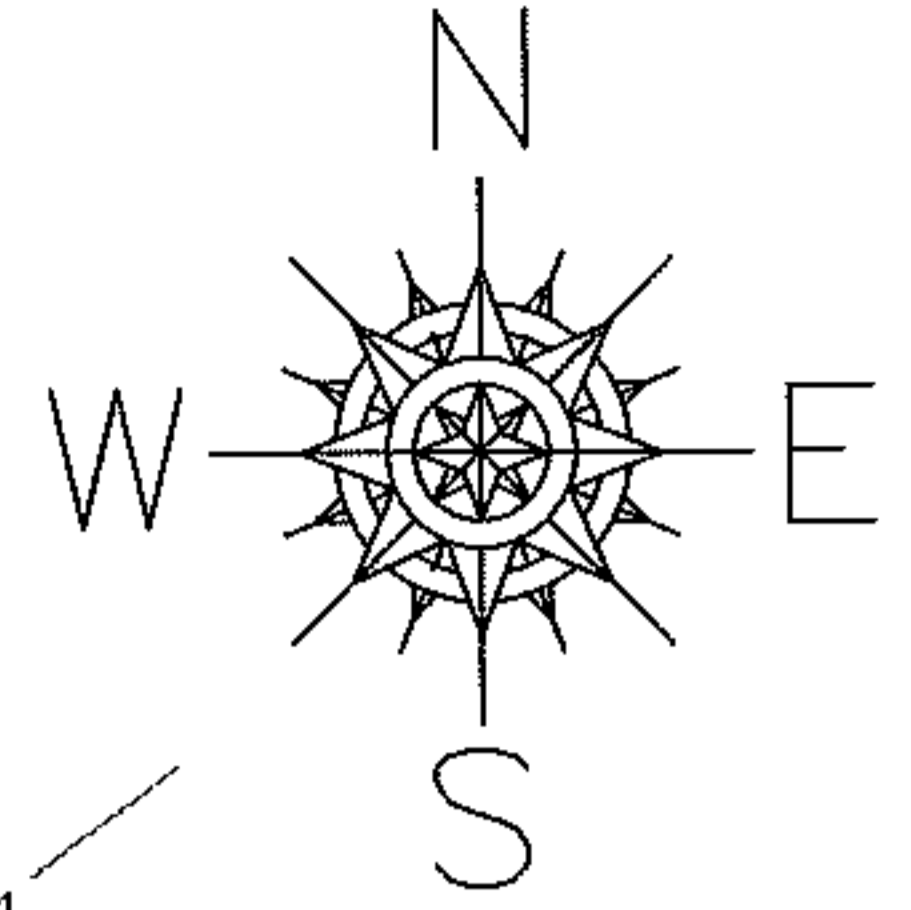
MASTER

PARENT PARCEL: 02-02-019-102-019

09-01889-D

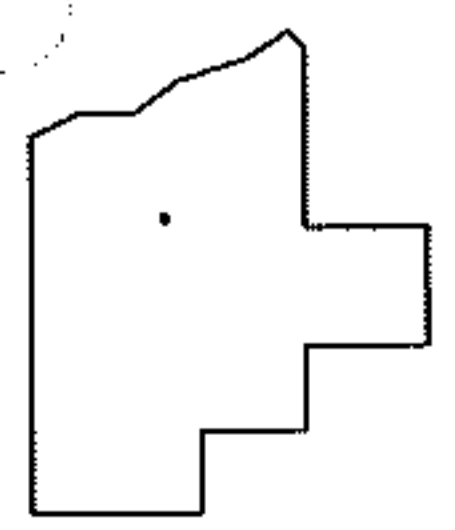
CHILD PARCEL:

STARTING POINT: INTERSECTION OF C/L OF S.R. 6 AND WEST LINE OF O.L.19



REMOVE UPDATE LEGAL

\* 20010761733  
20020802862



SPLITS/DEEDS PROCESSED

LORAIN COUNTY TAX MAP DEPARTMENT  
226 MIDDLE AVE. ELYRIA, OHIO

SURVEYED BY: PHIL A. ROSEBECK  
CLOSURE: .00:10,000  
MAP PAGE(S): 02-02-019-A  
APPROVED BY: RRM DATE: 9-21-09  
SCALE: 1"= 100 PRIOR INST.: SEE ABOVE \*