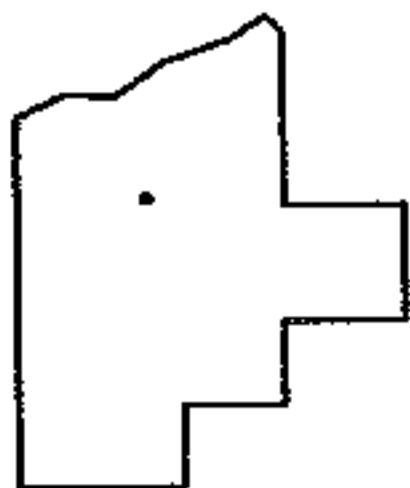
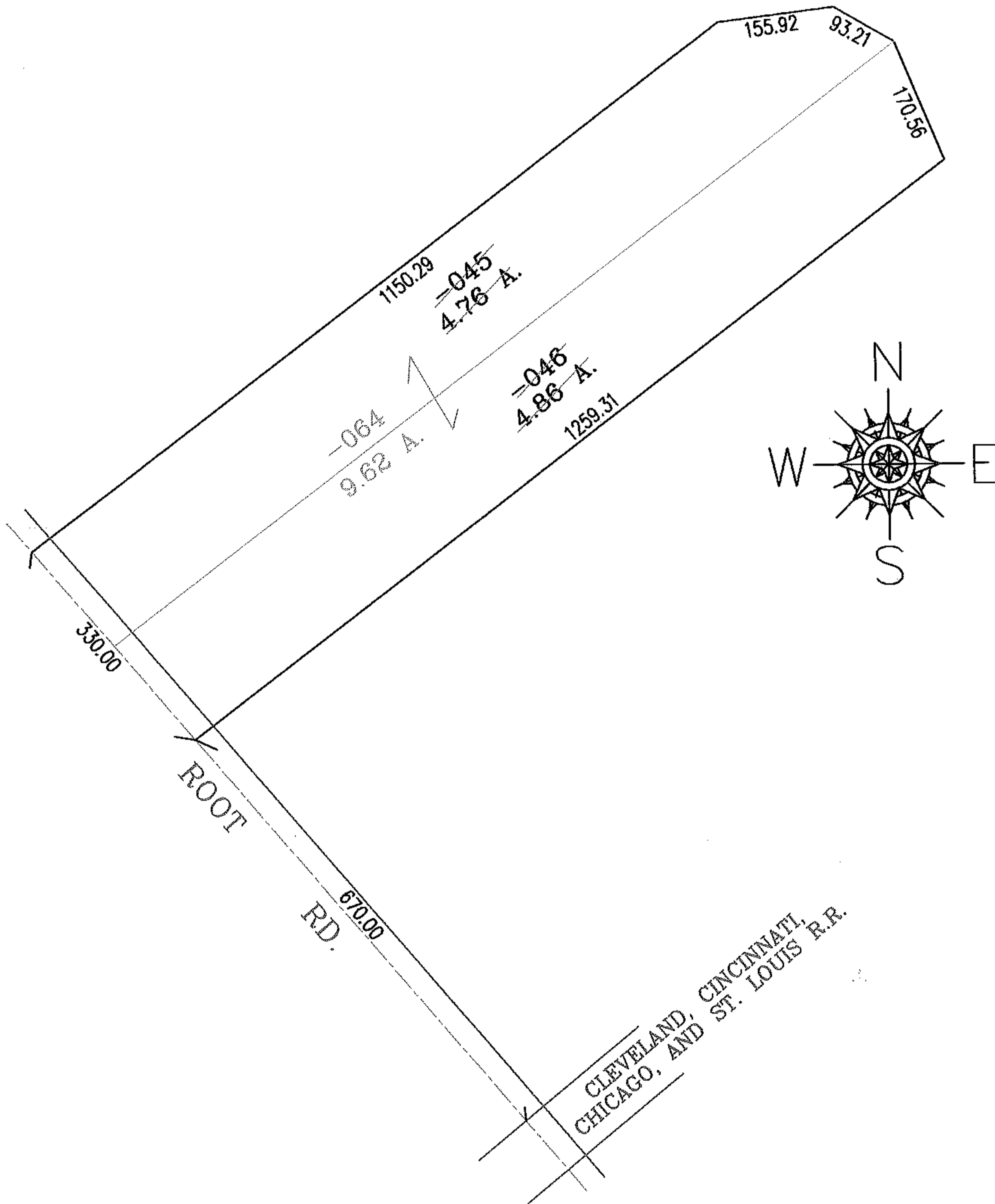


PARENT PARCEL: 12-00-083-000-045,-046

CHILD PARCEL: 12-00-083-000-064

NO. 01887

STARTING POINT: INTERSECTION OF C/L OF ROOT RD. AND NORTH ROW OF R.R.



SPLITS/DEEDS PROCESSED
LORAIN COUNTY TAX MAP DEPARTMENT
 226 MIDDLE AVE. ELYRIA, OHIO

SURVEYED BY: MICHAEL MACKAY
 CLOSURE: .00:10.000
 MAP PAGE(S): 12-00-083-B
 APPROVED BY: RRM DATE: 3-23-05
 SCALE: 1" = 200 PRIOR INSTRUMENT: DV 438/443