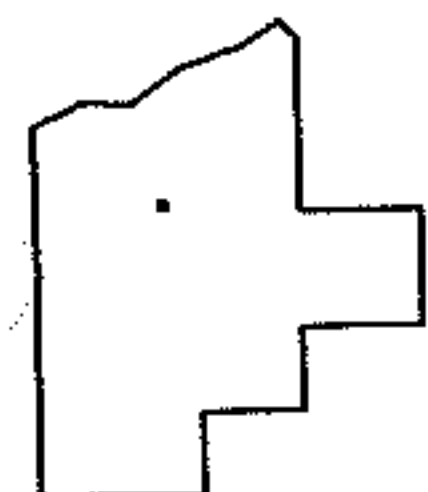
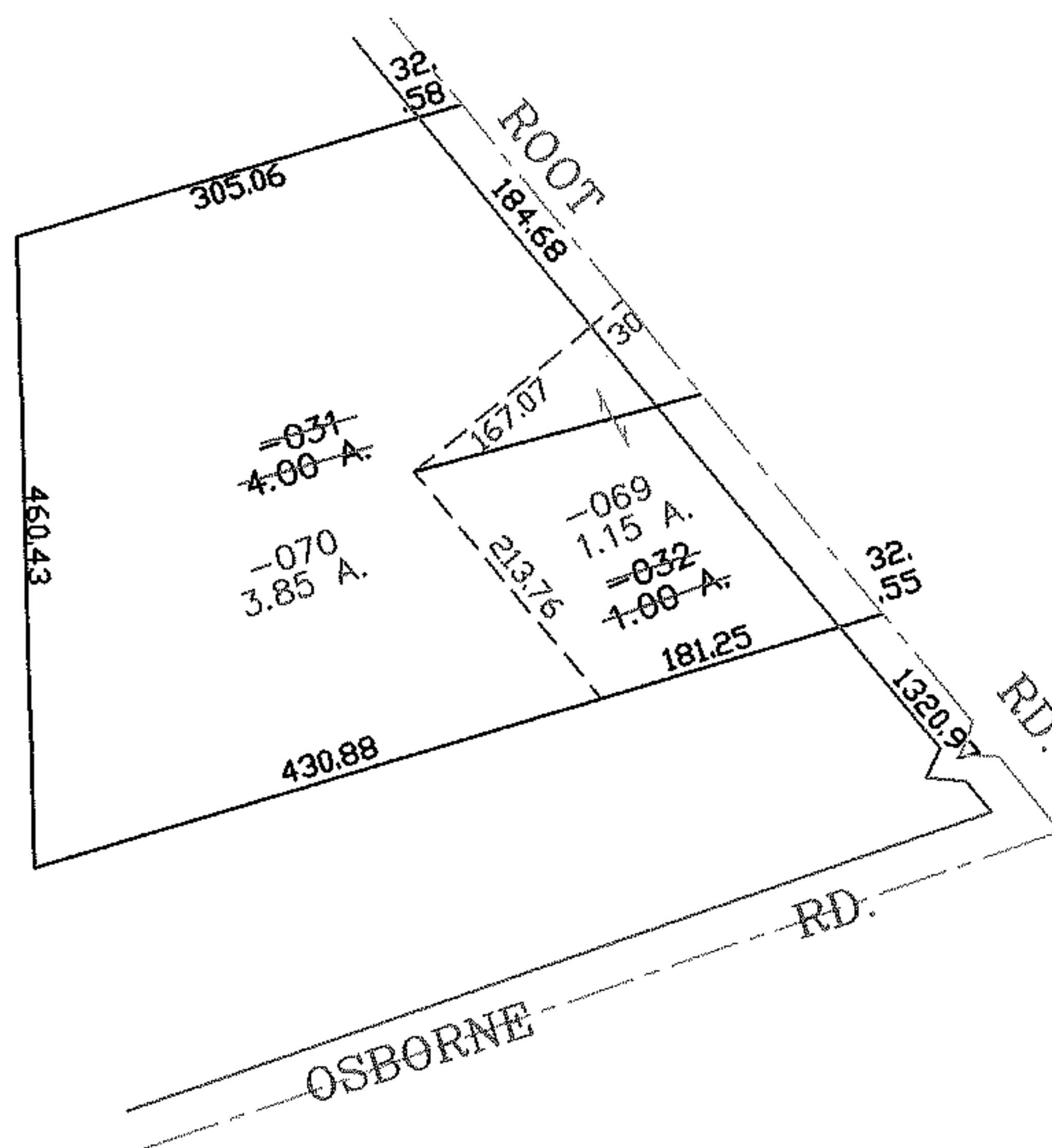
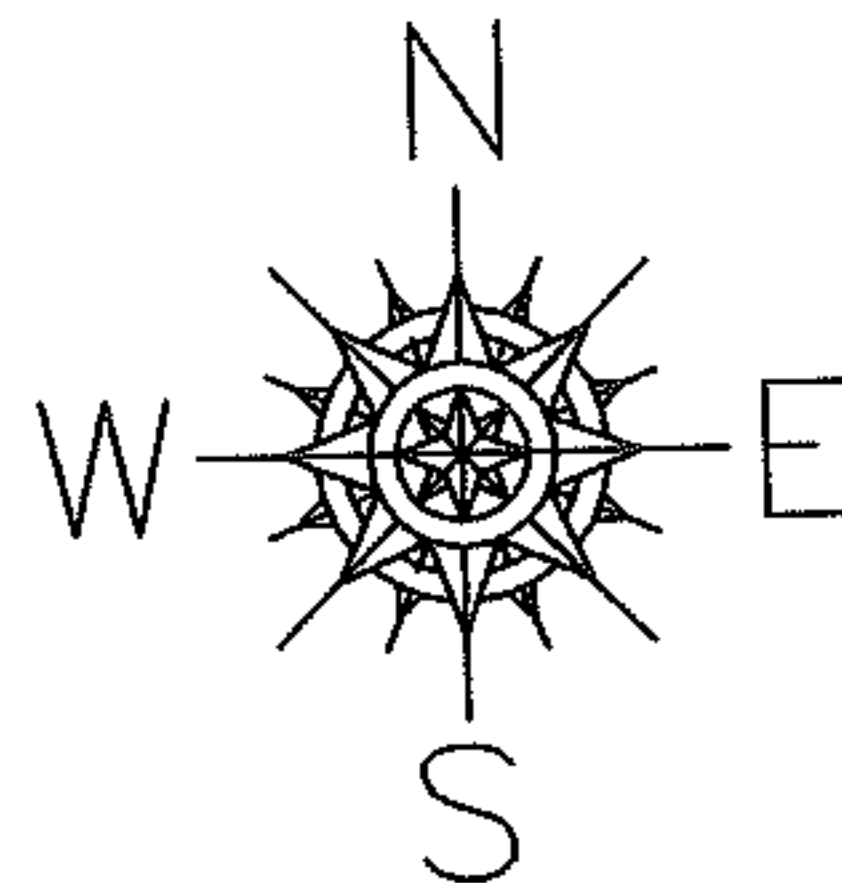


PARENT PARCEL: 12-00-098-000-031, -032

CHILD PARCEL: 12-00-098-000-069, -070

STARTING POINT: OSBORNE RD. & ROOT RD.

NO. 01874



SPLITS/DEEDS PROCESSED
LORAIN COUNTY TAX MAP DEPARTMENT
226 MIDDLE AVE. ELYRIA, OHIO

SURVEYED BY: SCOTT CASEY
CLOSURE: 0.00 : 10.000
MAP PAGE(S): 12-00-098-B
APPROVED BY: JAH DATE: 3-10-05
SCALE: 1" = 200' PRIOR INSTRUMENT: DV 981/189