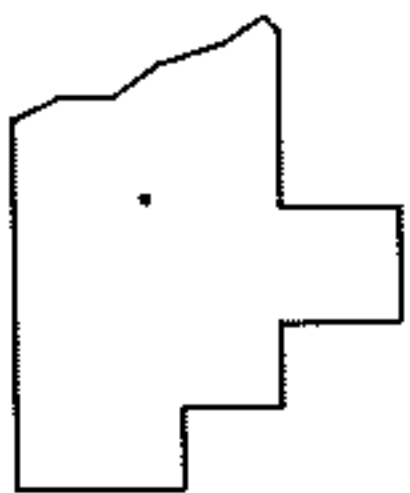
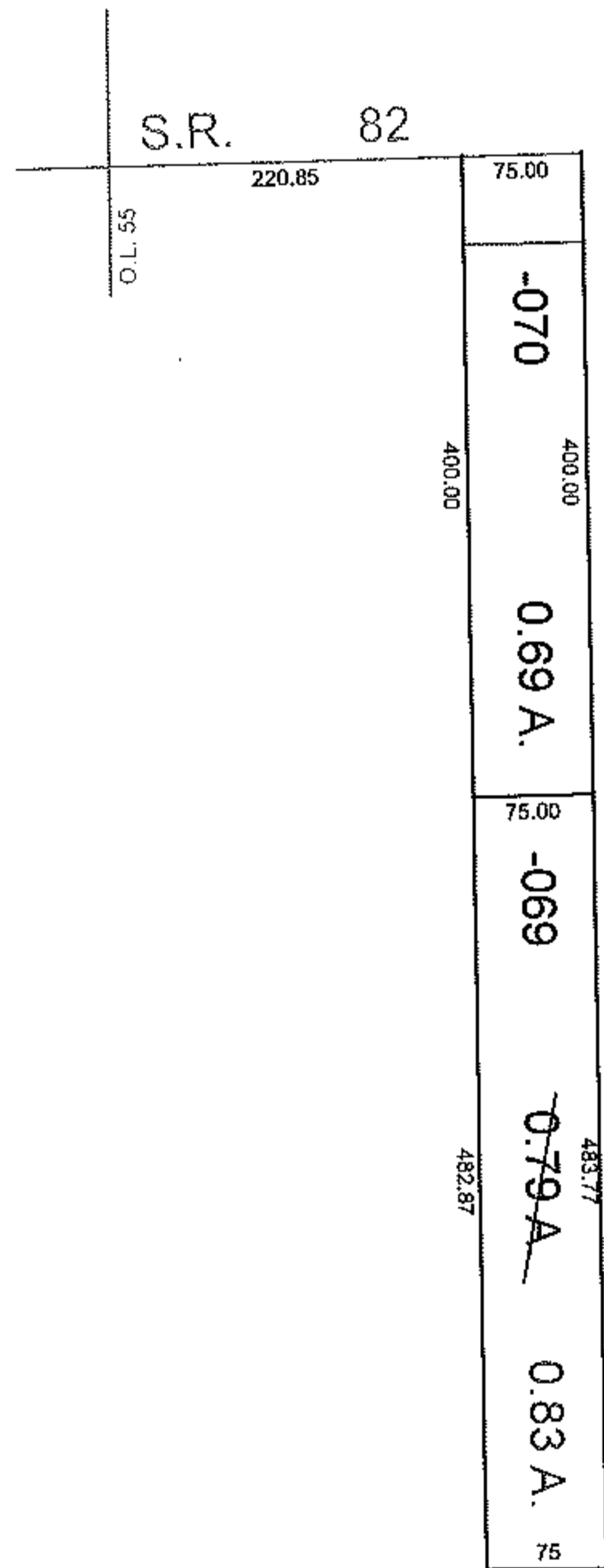
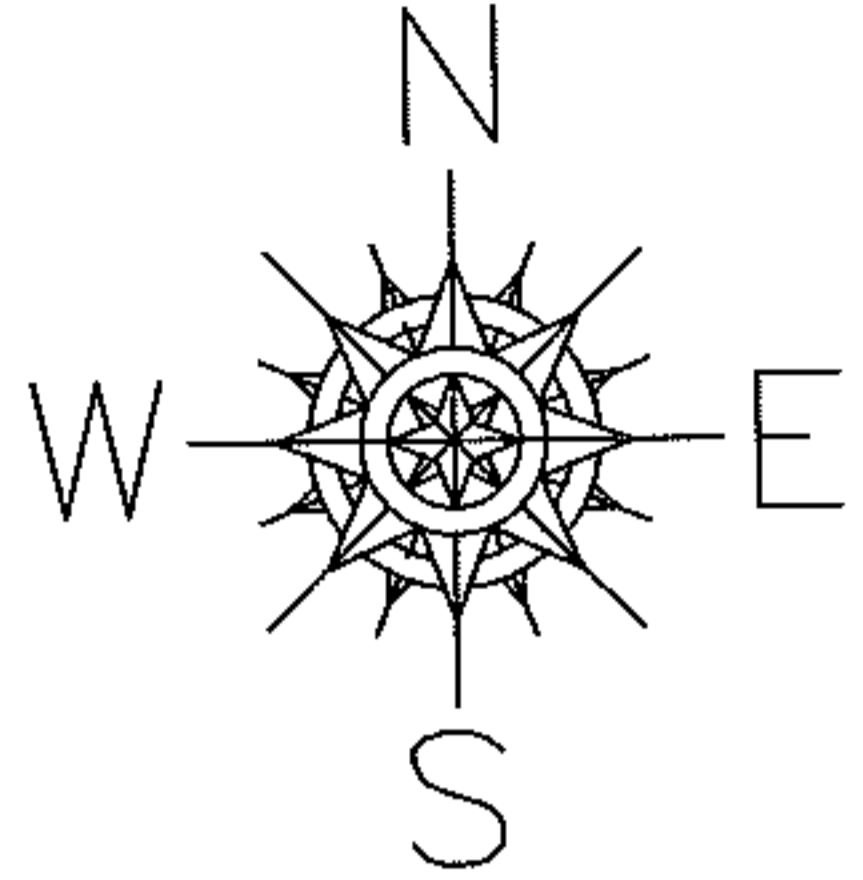


FASTER

PARENT PARCEL: 12-00-055-101-069 & -070
CHILD PARCEL: --SAME--
STARTING POINT: INT CL S.R. 82 & WEST LINE OF O.L. 55

09-01872-C

AC. CORR. TO CORRECT ACREAGE DUE TO COUNTY ENGINEER ERROR WITH R.O.W. DISTANCE



SPLITS/DEEDS PROCESSED

LORAIN COUNTY TAX MAP DEPARTMENT
226 MIDDLE AVE. ELYRIA, OHIO

SURVEYED BY: DOUG HASEL
CLOSURE: 1:10,000
MAP PAGE(S): 12-00-055-A
APPROVED BY: DRH DATE: 8/12/2009
SCALE: 1"= 200 PRIOR INST.: 20030957047