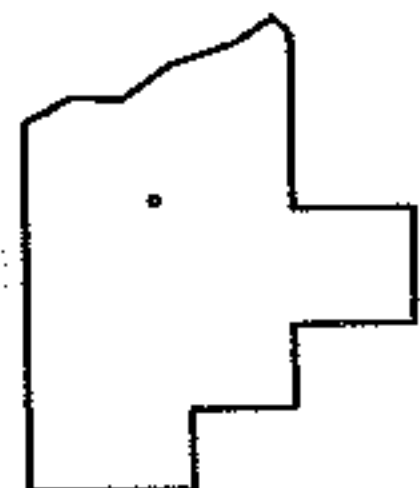
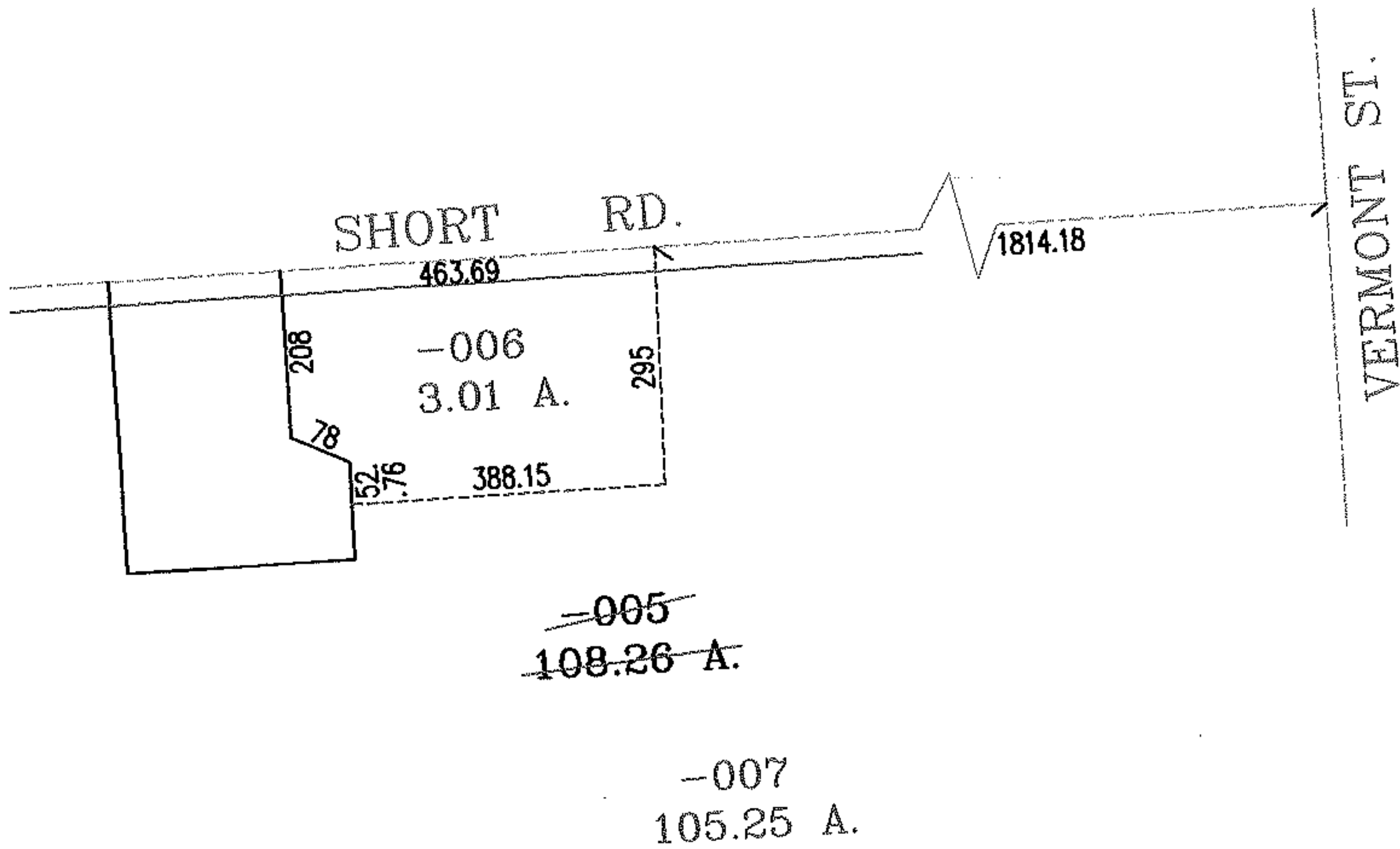
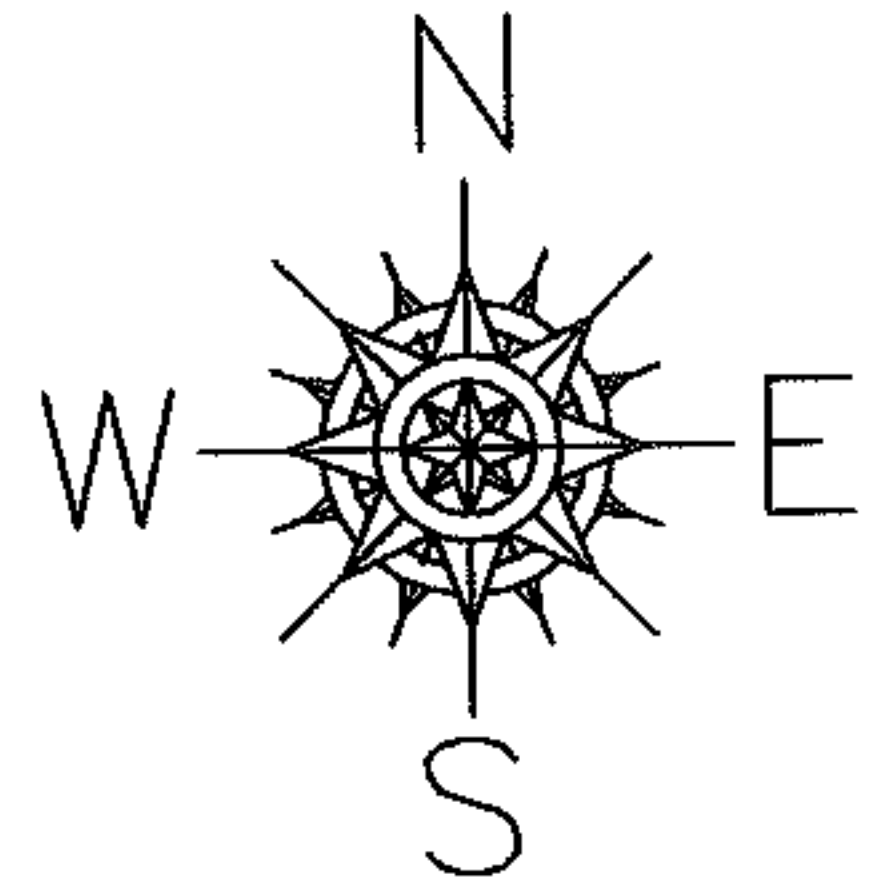


PARENT PARCEL: 19-05-039-000-005

CHILD PARCEL: 19-05-039-000-006,-007

STARTING POINT: INTERSECTION OF C/L OF VERMONT ST. AND C/L OF SHORT RD.

NO. 01871



SPLITS/DEEDS PROCESSED
 LORAIN COUNTY TAX MAP DEPARTMENT
 226 MIDDLE AVE. ELYRIA, OHIO

SURVEYED BY: THOMAS A. SIMON
 CLOSURE: .01:10.000
 MAP PAGE(S): 19-D
 APPROVED BY: RRM DATE: 3-1-05
 SCALE: 1"= 300 PRIOR INSTRUMENT: DV 1248/17