

RASTER

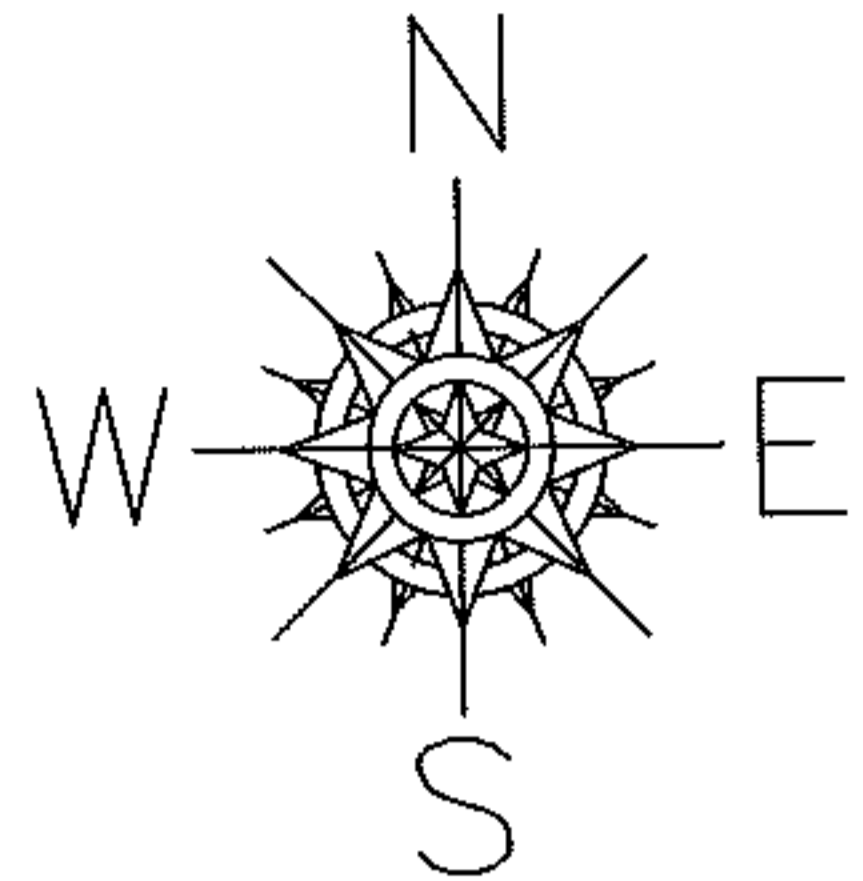
PARENT PARCEL: 17-07-017-000-007, -023, -024

09-01865-C

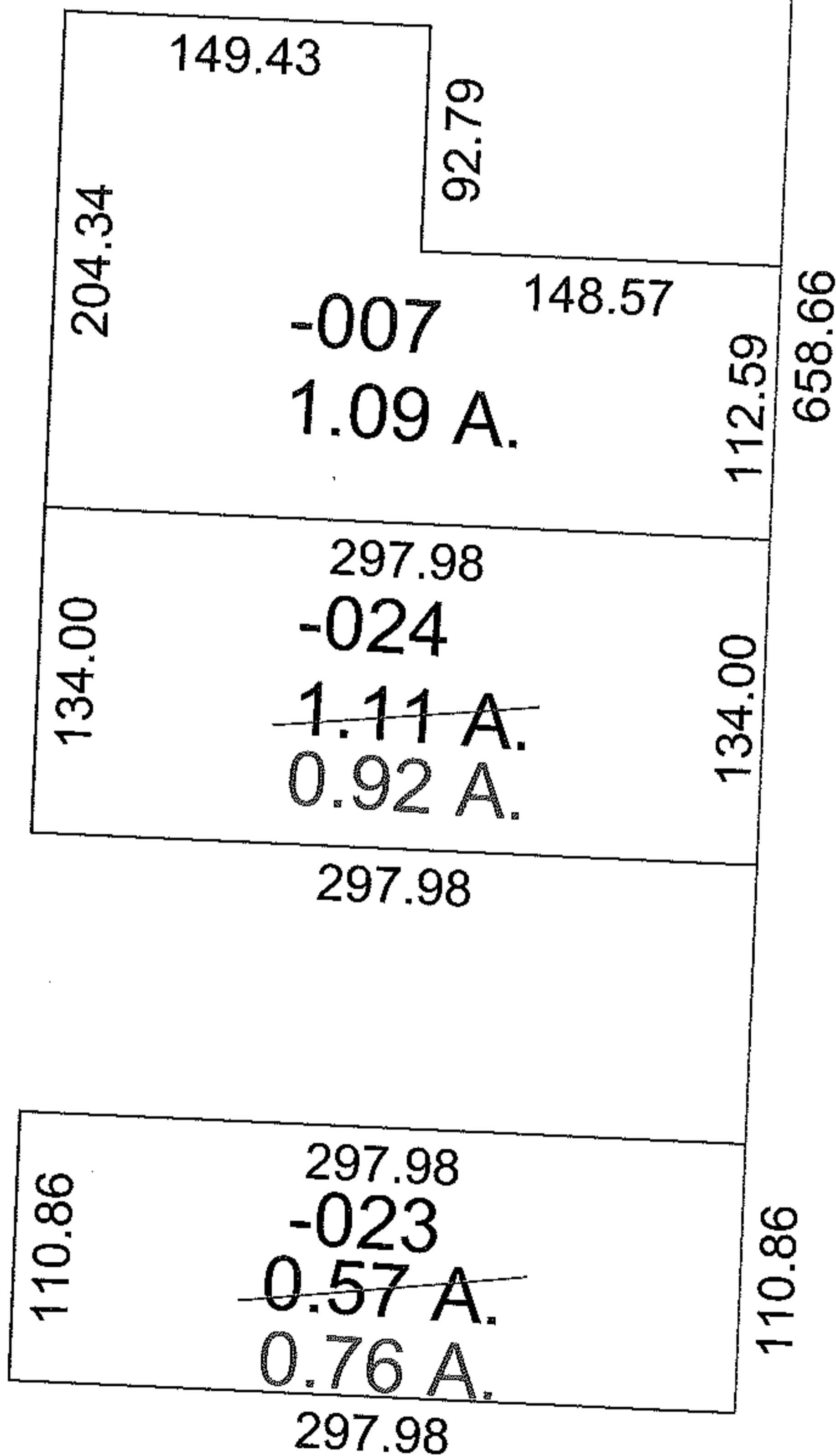
CHILD PARCEL: --SAME--

STARTING POINT: INT CL S.R. 18 AND S.R. 511

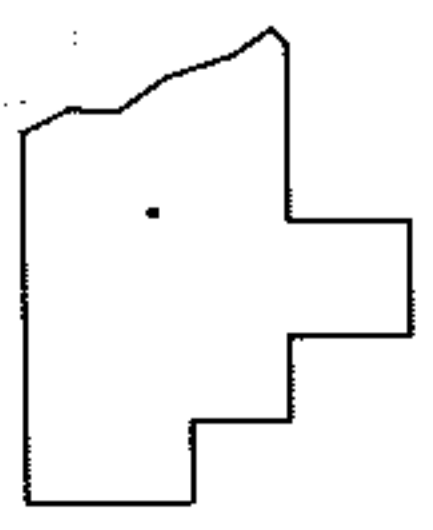
S.R. 18



AC. CORR.
PER SURVEY
R. FREDRICKSON



S.R. 511



SPLITS/DEEDS PROCESSED

LORAIN COUNTY TAX MAP DEPARTMENT
226 MIDDLE AVE. ELYRIA, OHIO

SURVEYED BY: RICHARD A. FREDRICKSON

CLOSURE: 1:10,000

MAP PAGE(S): 17-07-017-A

APPROVED BY: DRH DATE: 8/5/09

SCALE: 1"= 100 PRIOR INST.: 20090284158