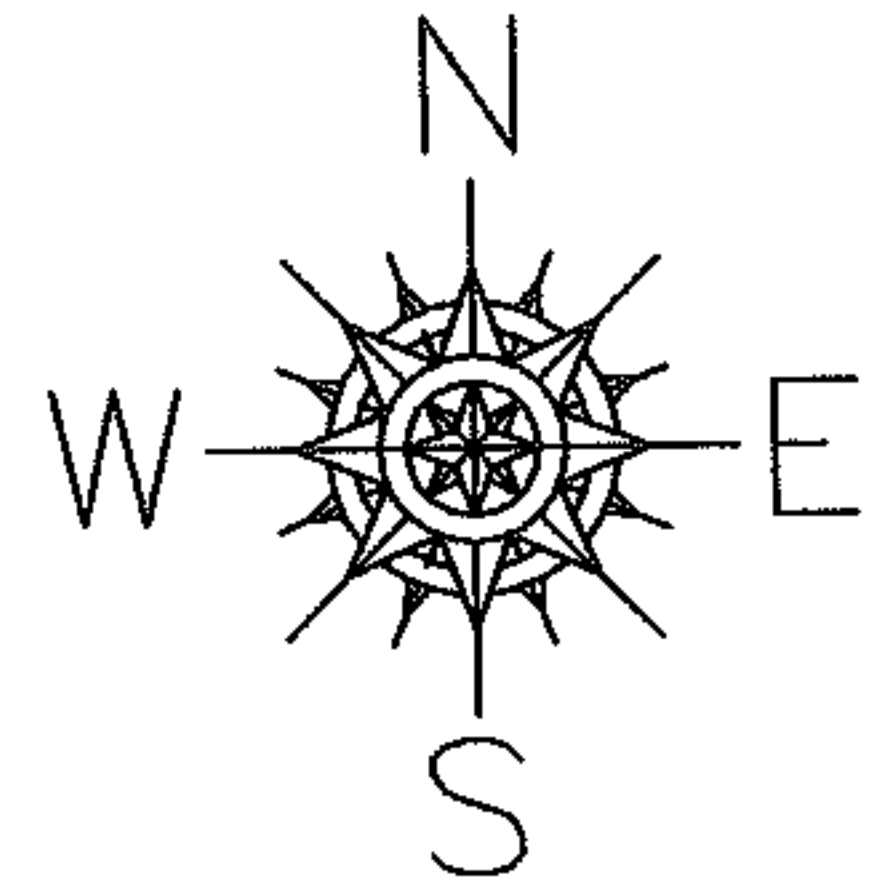


PARENT PARCEL: 06-25-102-000-017

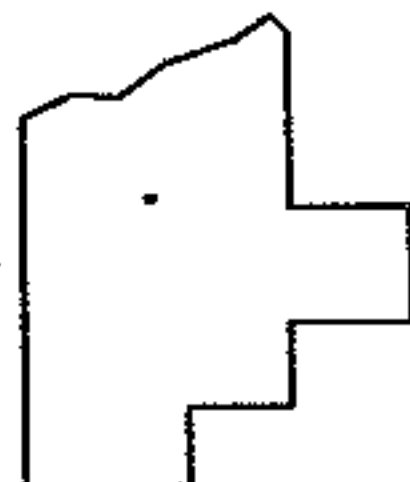
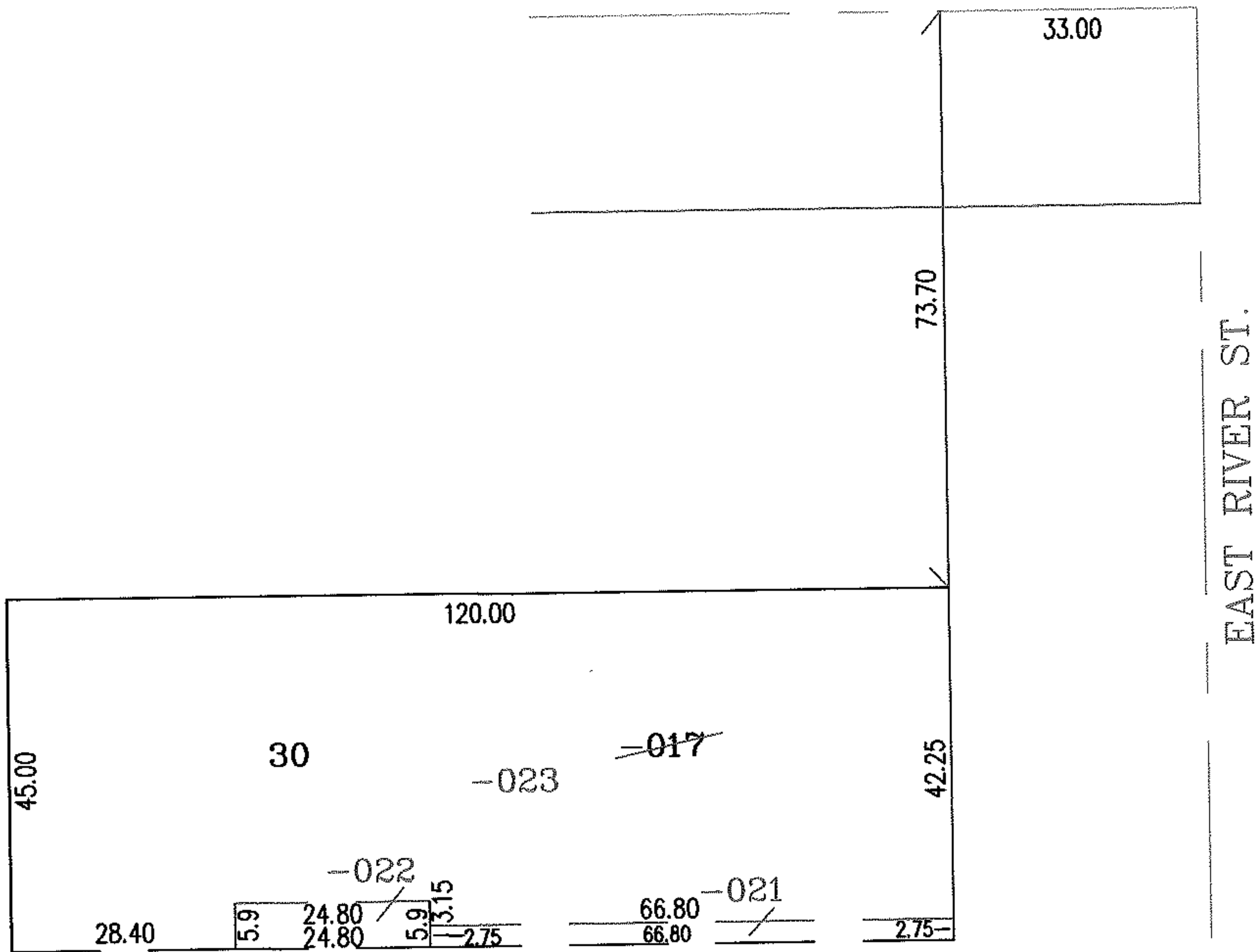
CHILD PARCEL: 06-25-102-000-021 THRU -023

STARTING POINT: INTERSECTION OF C/L OF CHASE ST AND C/L OF EAST RIVER ST.

NO. 01864



CHASE ST.



SPLITS/DEEDS PROCESSED
 LORAIN COUNTY TAX MAP DEPARTMENT
 226 MIDDLE AVE. ELYRIA, OHIO

SURVEYED BY: JOHN POZYWAK
 CLOSURE: .00:10.000
 MAP PAGE(S): 06-120
 APPROVED BY: RRM DATE: 2-24-05
 SCALE: 1" = 25' PRIOR INSTRUMENT: 980547889