

RASTER

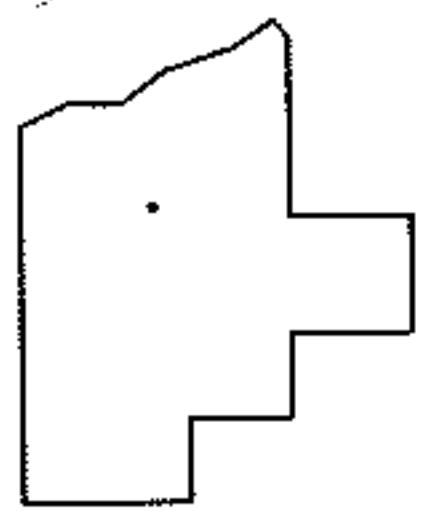
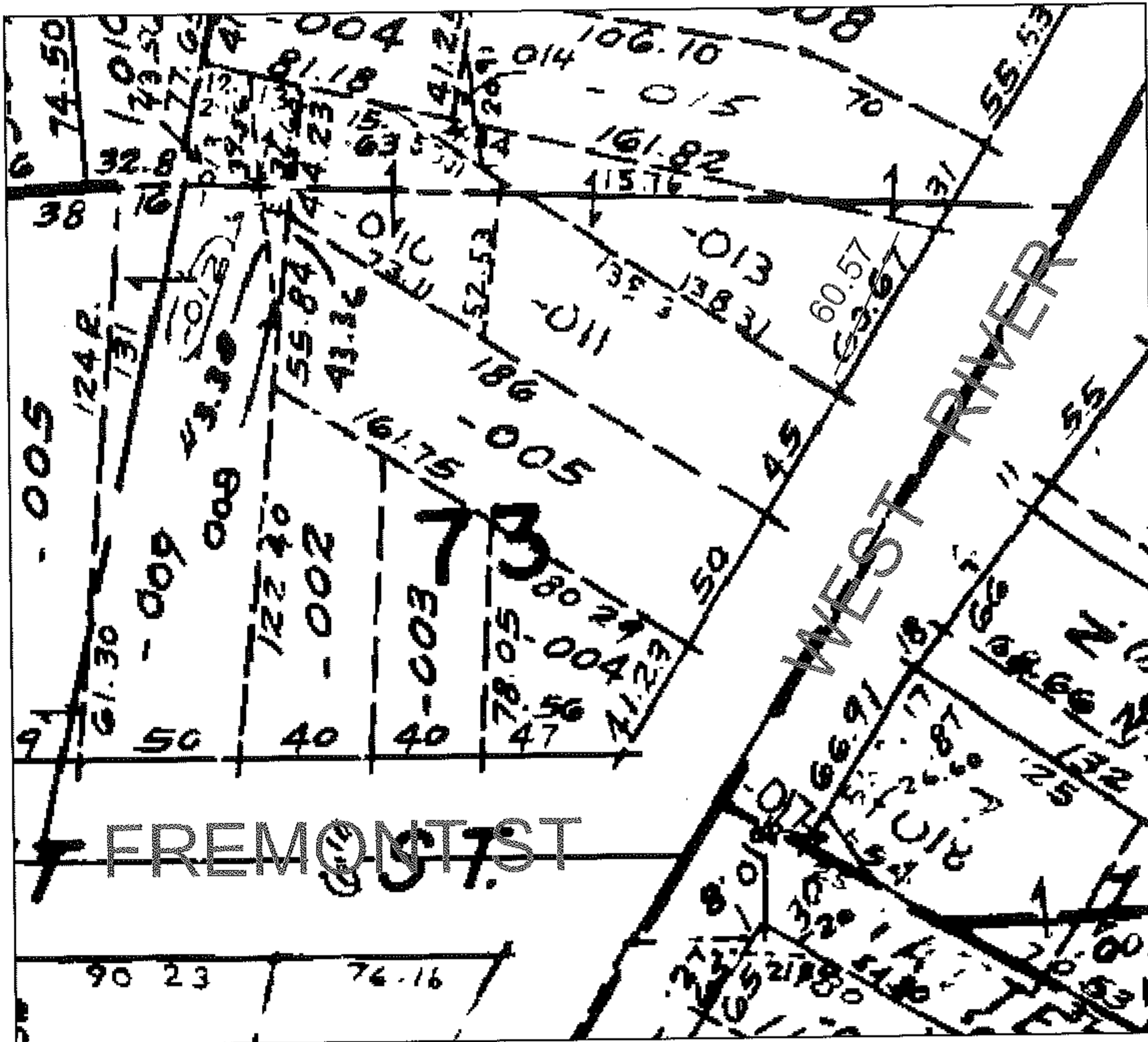
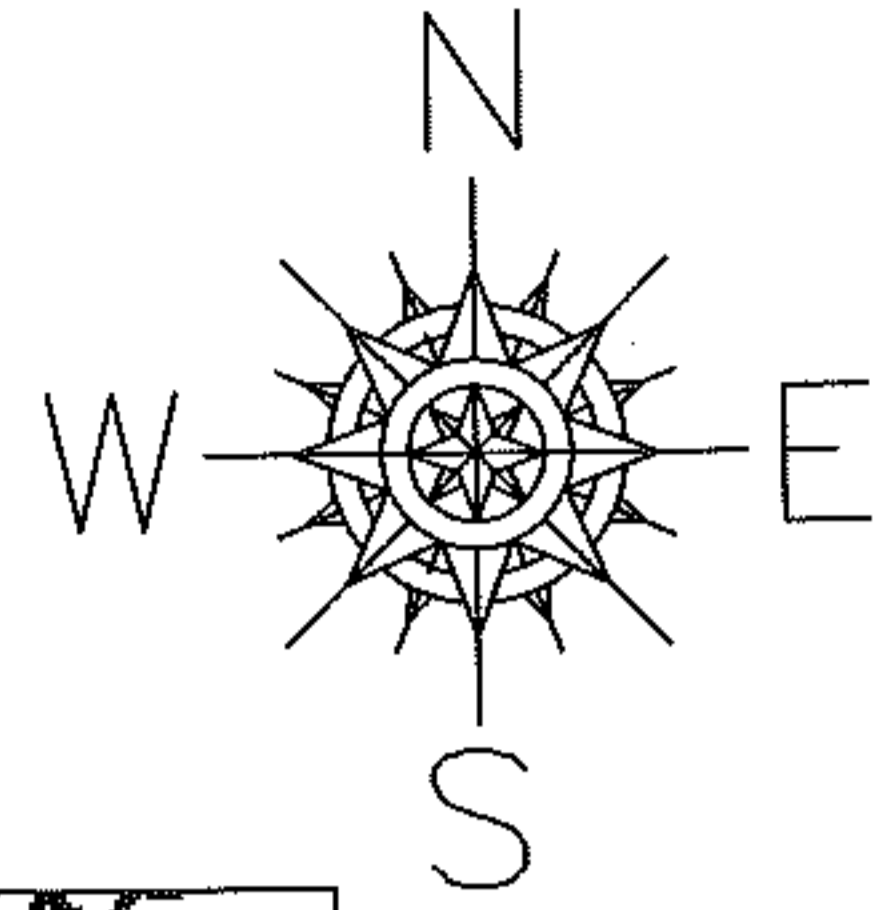
PARENT PARCEL: 06-24-073-000-013

CHILD PARCEL: --SAME--

STARTING POINT: INT CL FREMONT ST. AND WEST RIVER

09-01862-C

FRONTAGE CORR PER DEEDS



SPLITS/DEEDS PROCESSED

LORAIN COUNTY TAX MAP DEPARTMENT
226 MIDDLE AVE. ELYRIA, OHIO

SURVEYED BY: N/A
CLOSURE: N/A
MAP PAGE(S): 6-100
APPROVED BY: DRH DATE: 8/11/2009
SCALE: NOT TO SCALE PRIOR INST.: 840/31