

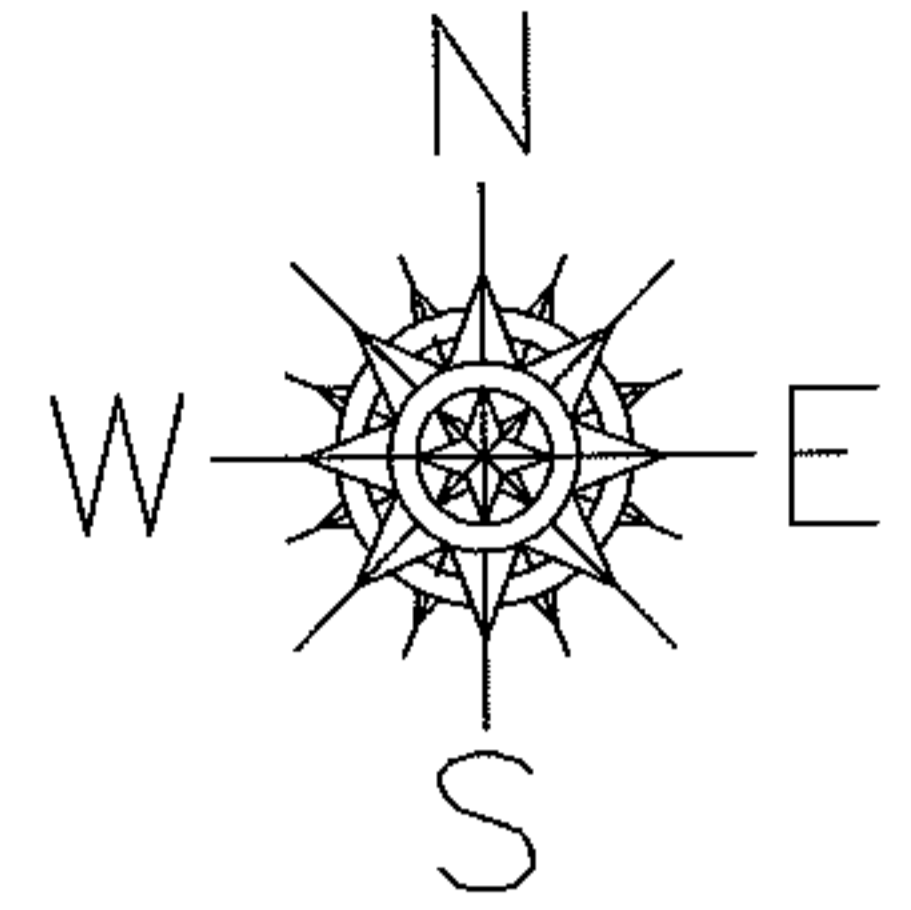
RASTER

PARENT PARCEL: 03-00-108-105-042

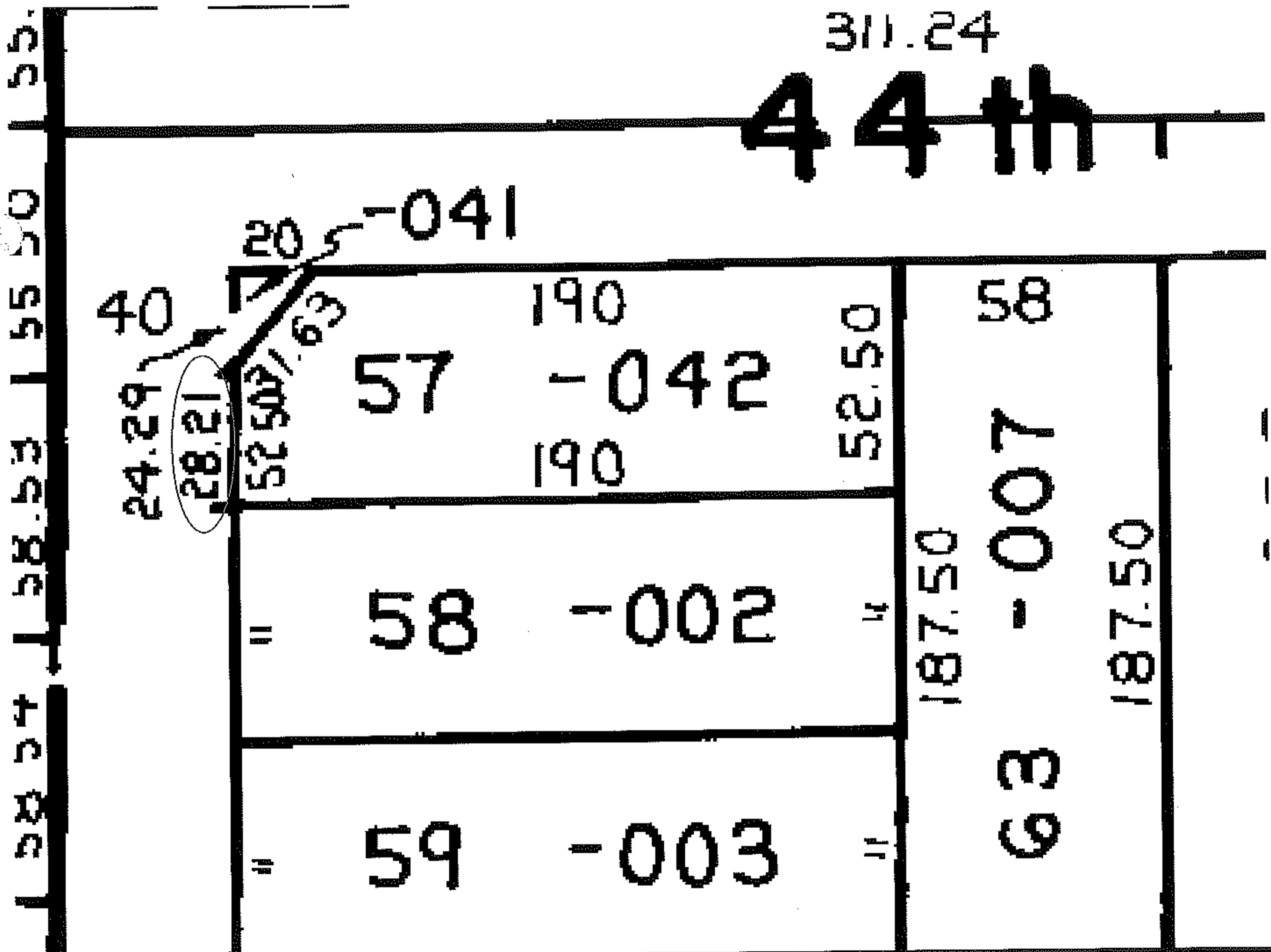
CHILD PARCEL: --SAME--

STARTING POINT: INT CL 44TH ST AND BROADWAY

09-01844-C



FRONTAGE CORR PER
MAP
NO MAP CORRECTION



SPLITS/DEEDS PROCESSED

LORAIN COUNTY TAX MAP DEPARTMENT
226 MIDDLE AVE. ELYRIA, OHIO

SURVEYED BY: N/A

CLOSURE: N/A

MAP PAGE(S): 03-00-108-A

APPROVED BY: DRH DATE: 6/17/2009

SCALE: NOT TO SCALE PRIOR INST.: 20060142340