

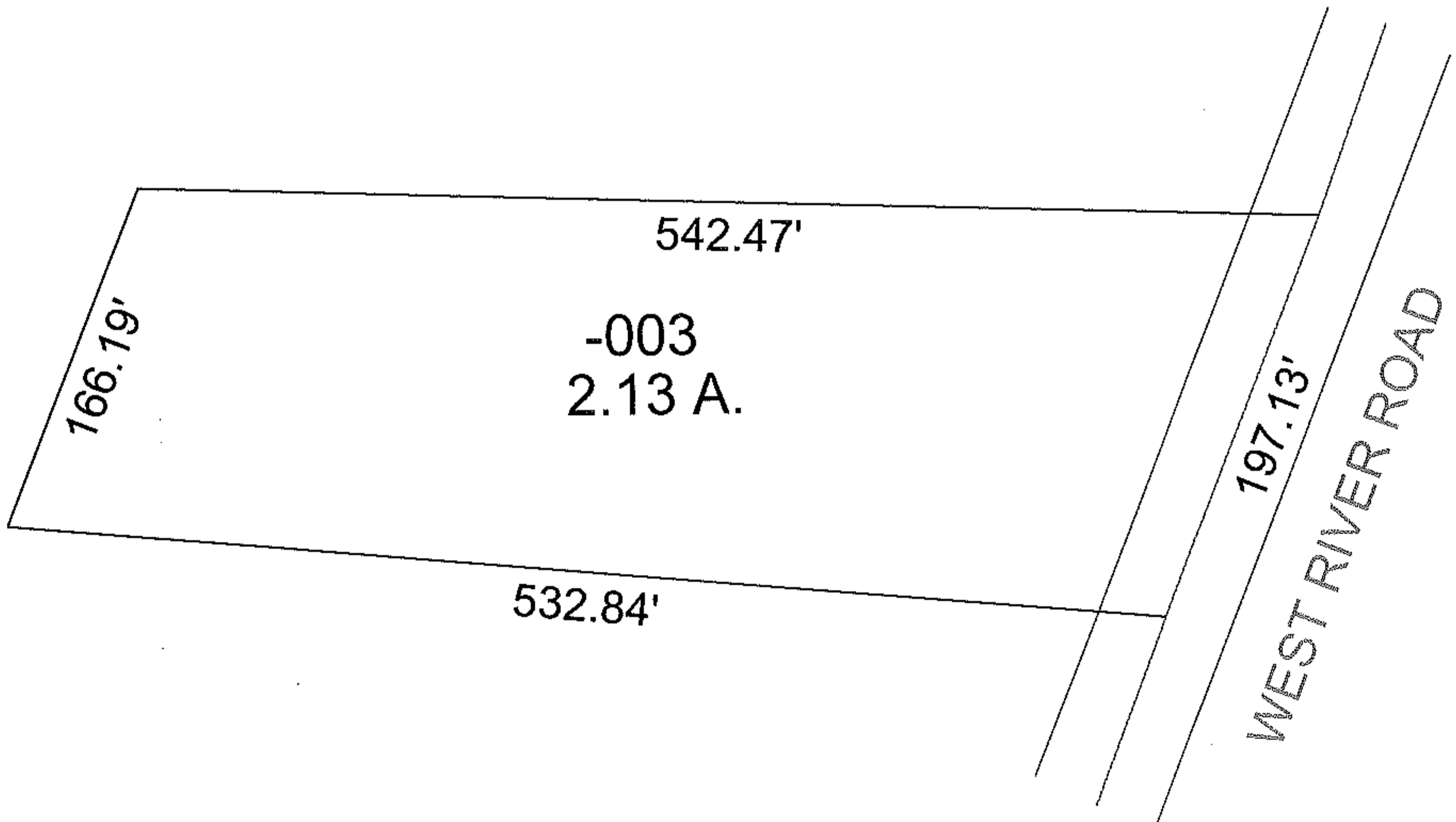
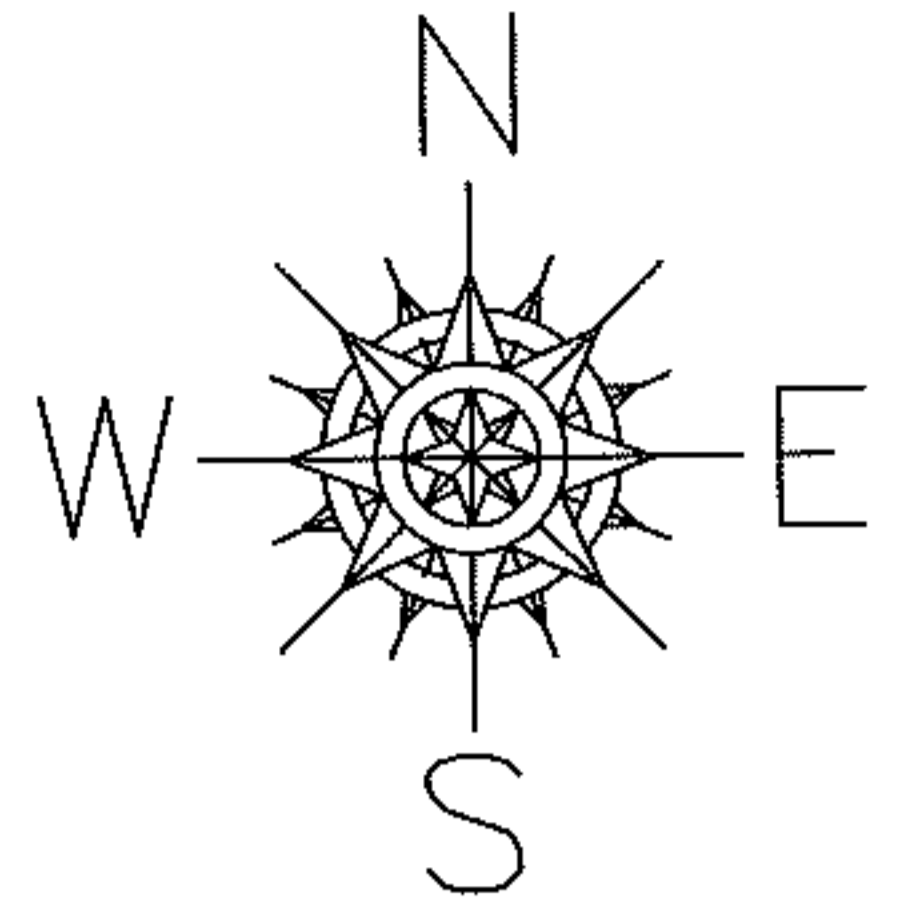
R A S T E S E

PARENT PARCEL: 12-00-043-000-003

CHILD PARCEL: SAME

STARTING POINT: C/L OF W. RIVE ROAD AND SE CORNER OF PARCEL V/P 101/89

NO. 09-01840-D



SPLITS/DEEDS PROCESSED

LORAIN COUNTY TAX MAP DEPARTMENT
226 MIDDLE AVE. ELYRIA, OHIO

SURVEYED BY: LEGAL DESCRIPTION

CLOSURE: 1:10000

MAP PAGE(S): 12-00-043-B

APPROVED BY: MBK DATE: 06/08/2008

SCALE: 1" = 100 PRIOR INSTRUMENT: DV 1340/0235