

RASTER

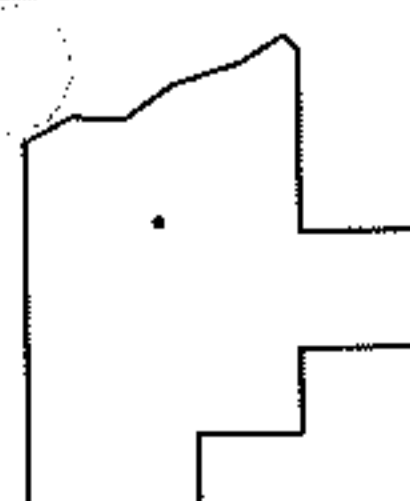
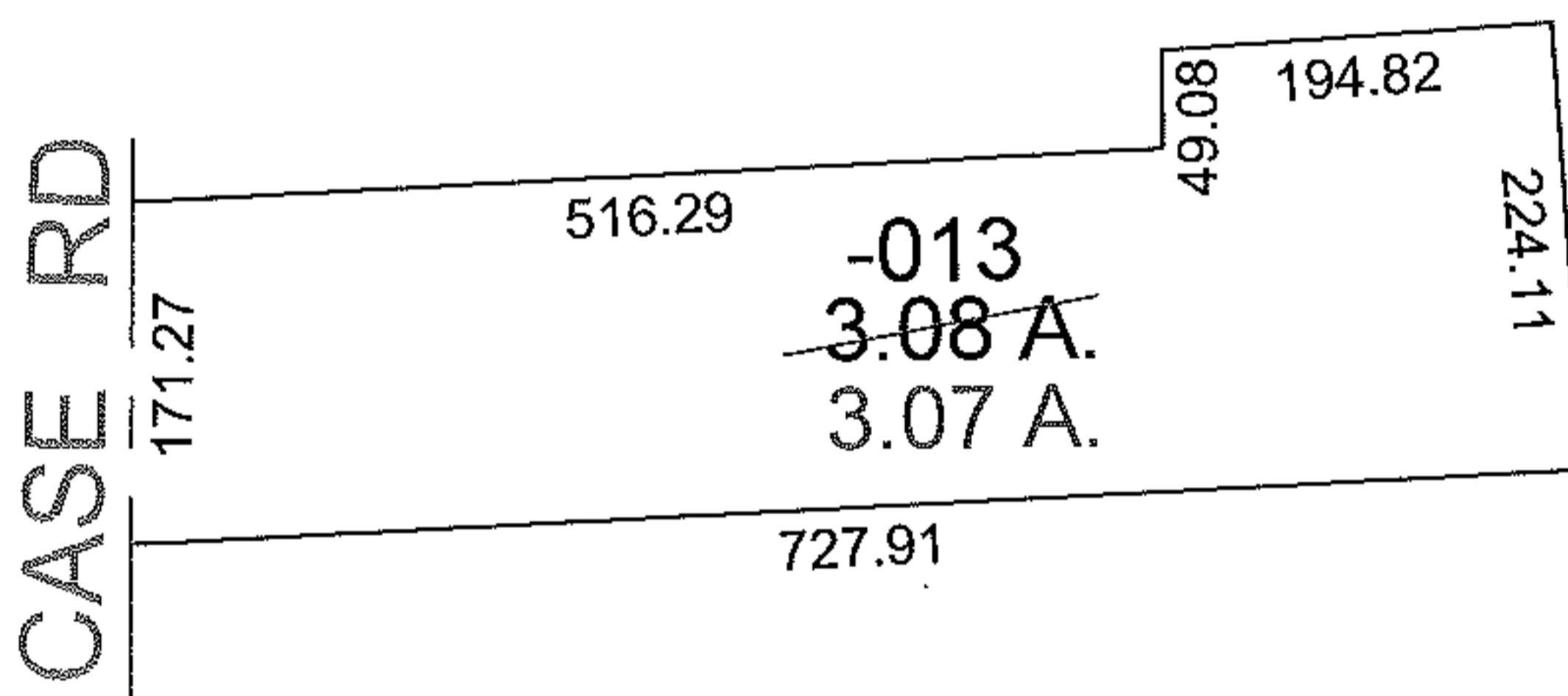
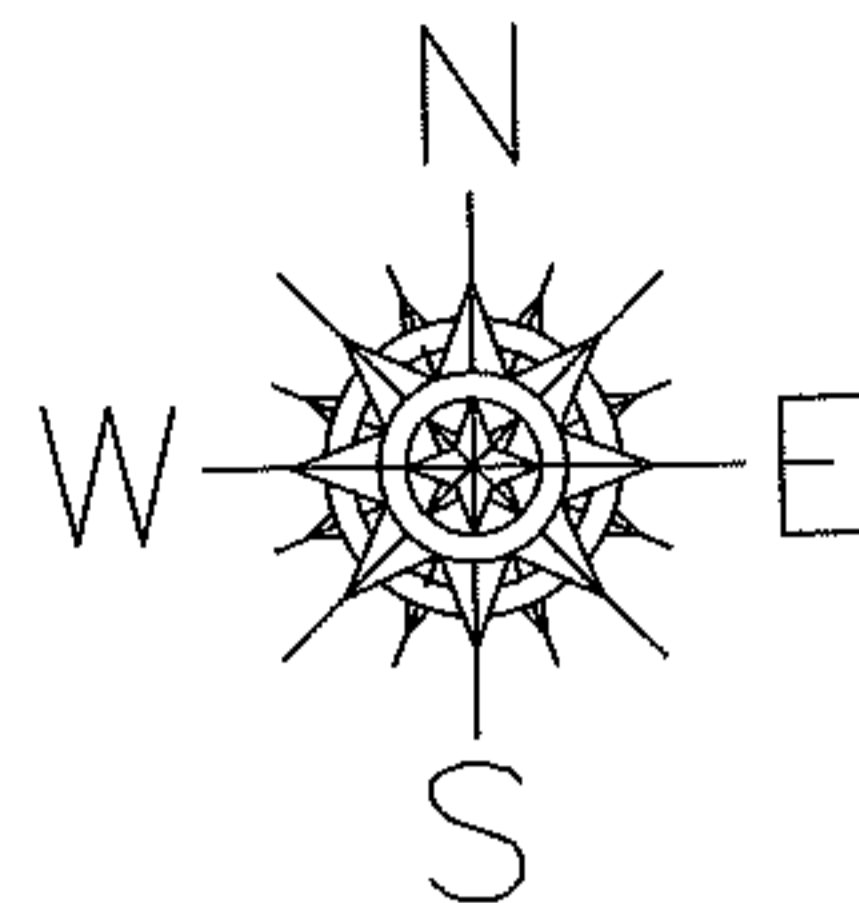
PARENT PARCEL: 04-00-001-103-013

CHILD PARCEL: --SAME--

STARTING POINT:

09-01838-C

AC. CORR.
PER SURVEY
K.S ASSOC.



SPLITS/DEEDS PROCESSED
LORAIN COUNTY TAX MAP DEPARTMENT
226 MIDDLE AVE. ELYRIA, OHIO

SURVEYED BY: K.S. ASSOCIATES
CLOSURE: 1:10,000
MAP PAGE(S): 04-00-001-B
APPROVED BY: DRH DATE: 6/10/2009
SCALE: 1" = 200' PRIOR INSTRUMENT: 1289/153