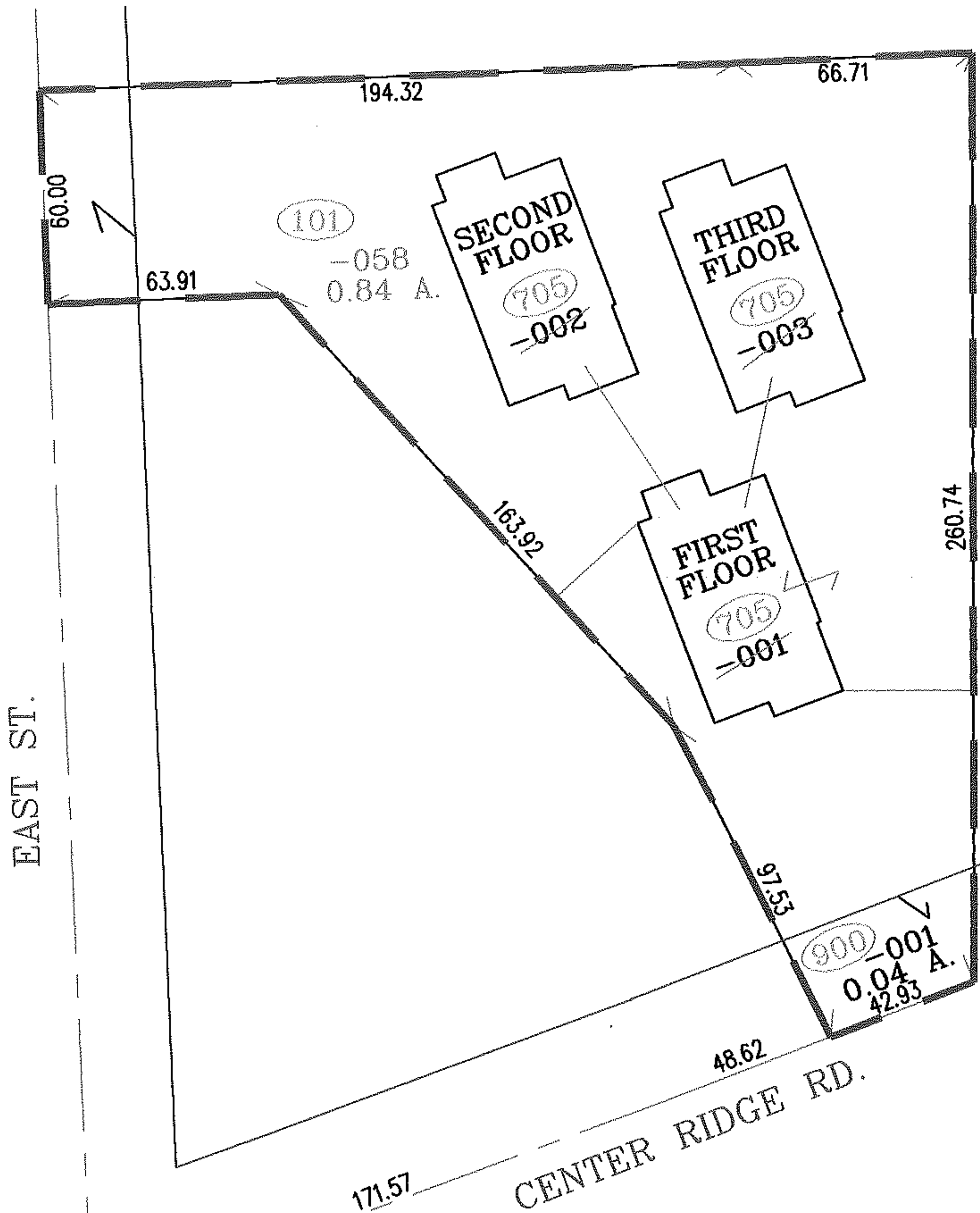
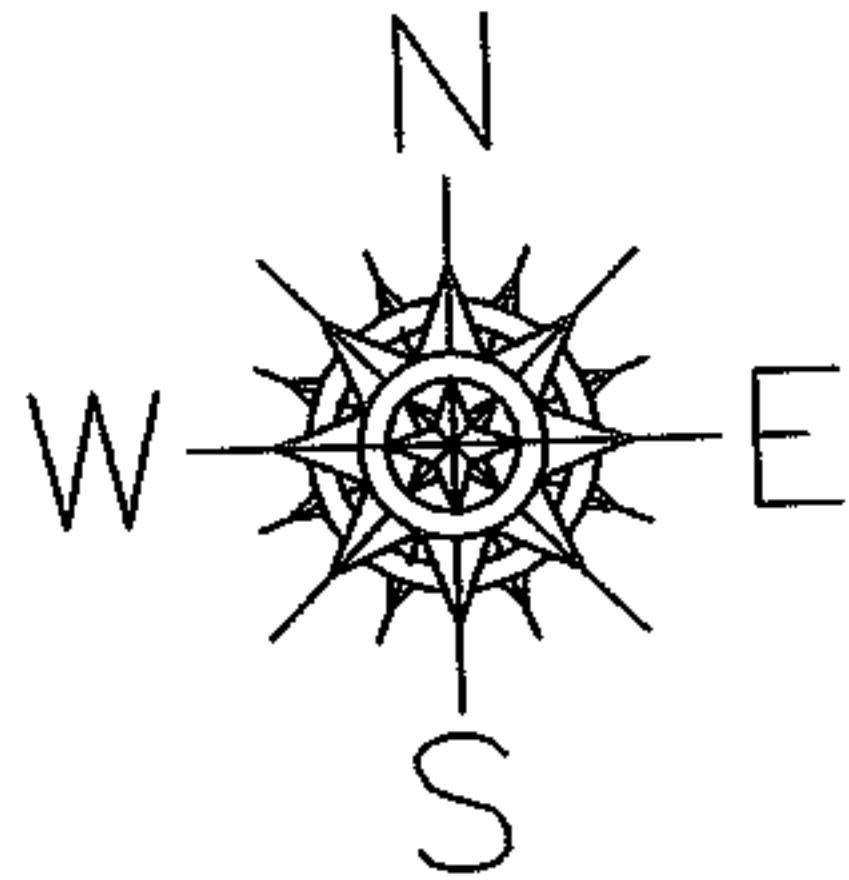


PARENT PARCEL: 07-00-021-705-001 THRU -003
CHILD PARCEL: 07-00-021-101-058
STARTING POINT: INTERSECTION OF C/L OF EAST ST. AND C/L OF CENTER RIDGE RD.

NO. 01835



COMBINATION OF ALL THREE FLOORS AND COMMON AREA OF CENTER POINTE CONDOMINIUM OFFICE COMPLEX PH. 1 VOL.46 PGS.40-41



SPLITS/DEEDS PROCESSED
LORAIN COUNTY TAX MAP DEPARTMENT
226 MIDDLE AVE. ELYRIA, OHIO

SURVEYED BY: JAMES R. FOOR
CLOSURE: .00:10.000
MAP PAGE(S): 7-00-021-A-1
APPROVED BY: RRM DATE: 4-22-05
SCALE: 1" = 50' PRIOR INSTRUMENT: 20030938881