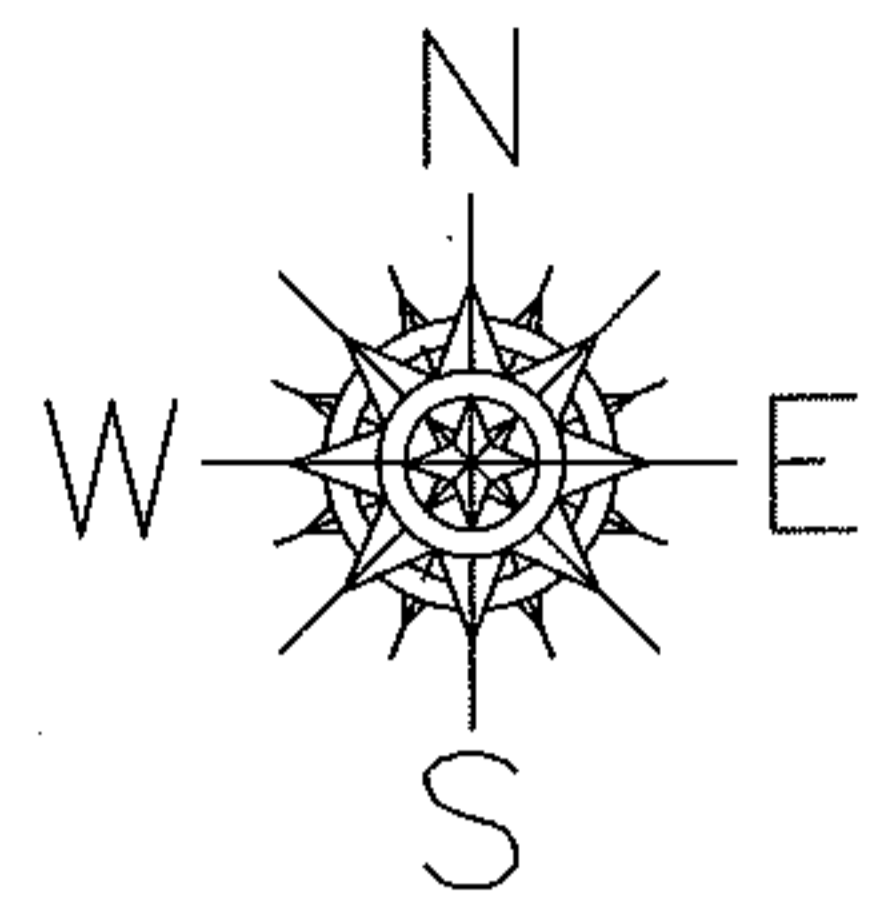


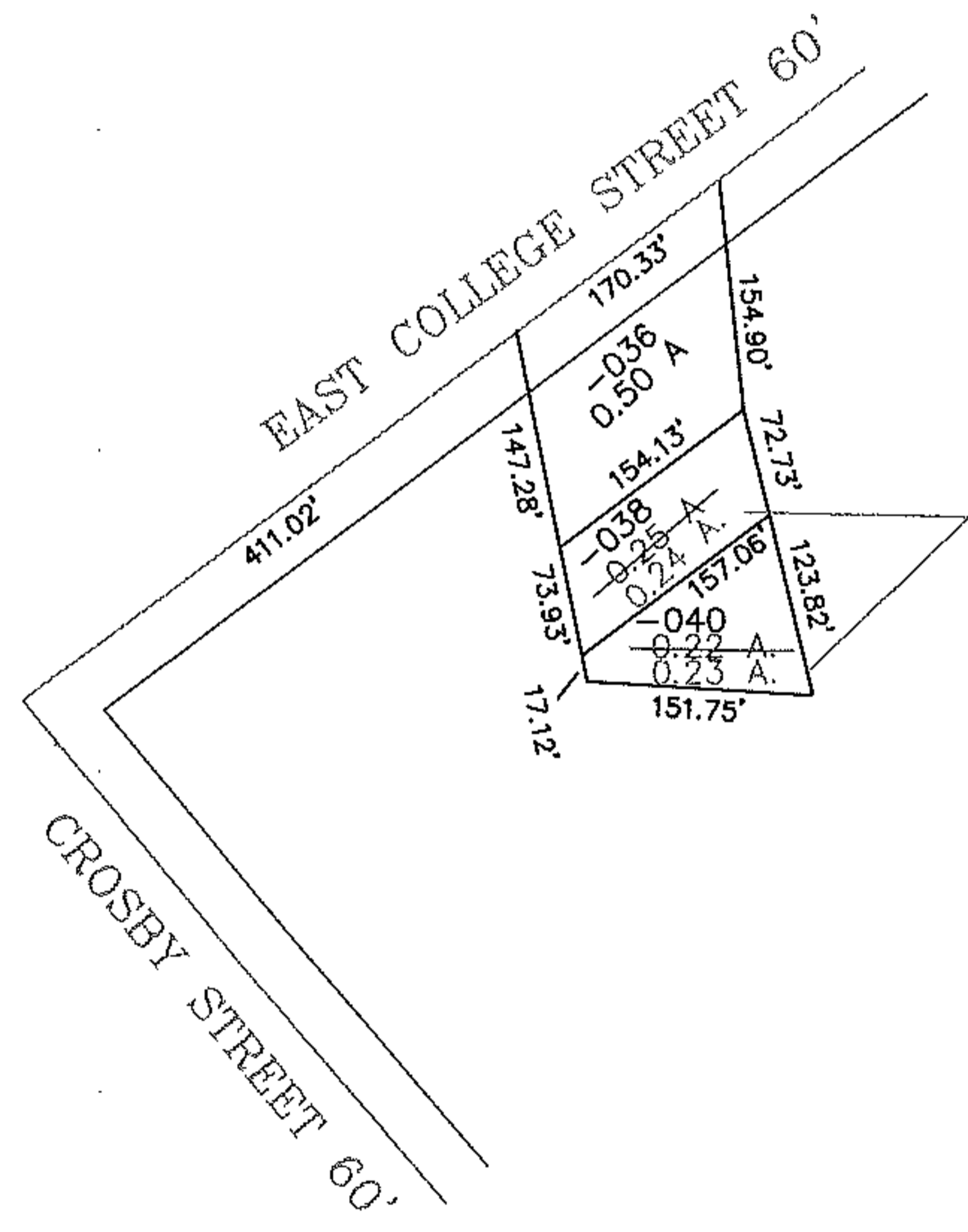
RASTER

PARENT PARCEL: 09-00-088-105-036, 038, 040
CHILD PARCEL: SAME
STARTING POINT: INT OF CENTERLINE OF EAST COLLEGE ST. AND CROSBY STREET

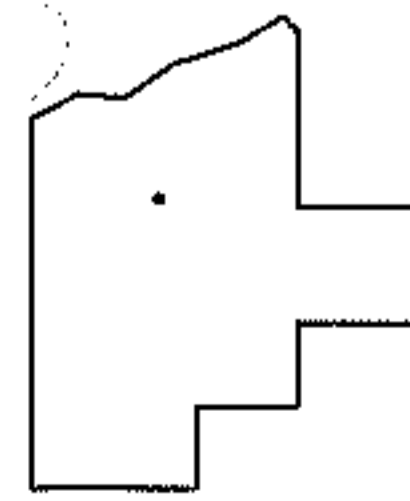
NO. 09-01835-D



Acreege Correction - Map Correction Only



Acreege Correction per M. MacKay Survey



SPLITS/DEEDS PROCESSED
LORAIN COUNTY TAX MAP DEPARTMENT
226 MIDDLE AVE. ELYRIA, OHIO

SURVEYED BY: Michael MacKay
CLOSURE: 1:10000
MAP PAGE(S): 09-00-088-A
APPROVED BY: mbk DATE: 05/28/09
SCALE: 1" = 200' PRIOR INSTRUMENT: 20090294721