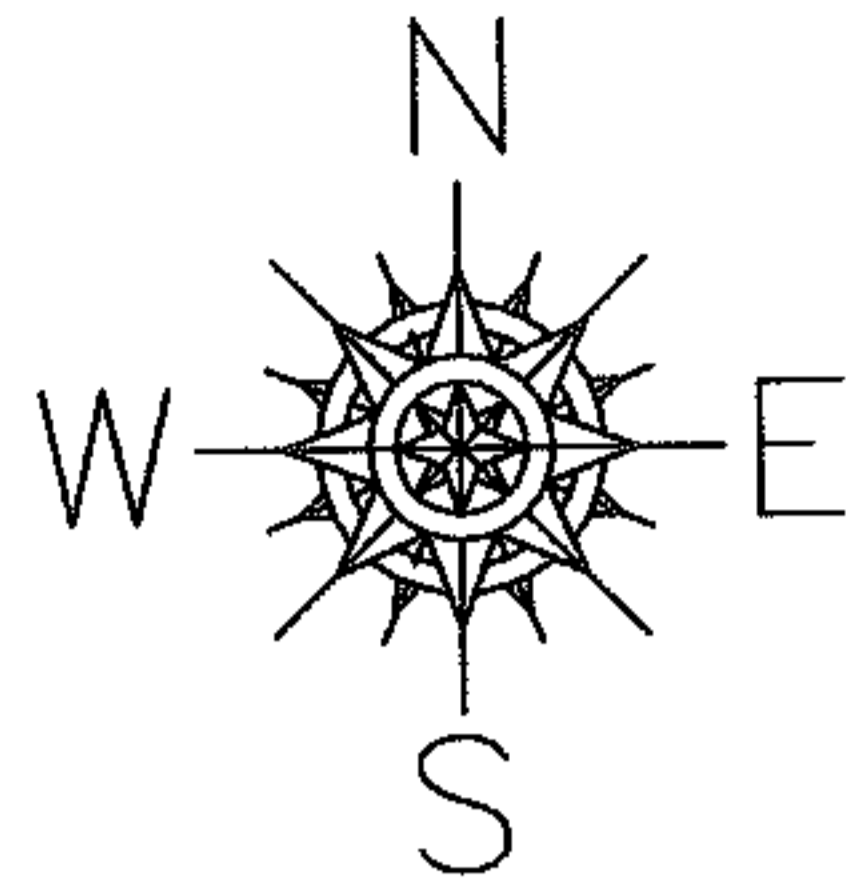


RASTER

PARENT PARCEL: 06-24-065-101-019, 020
CHILD PARCEL: N/A
STARTING POINT: Southerly side of intersection Dewey Ave and Lorain Blvd

09-01830-C



Frontage and Depth Correction

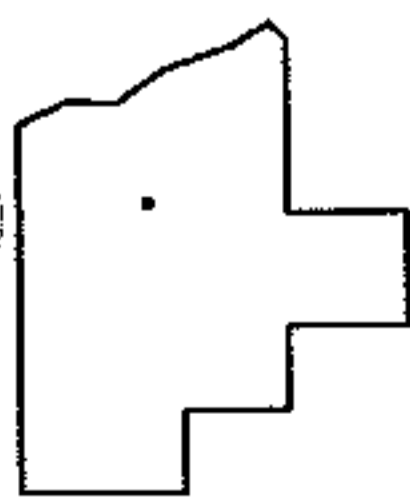
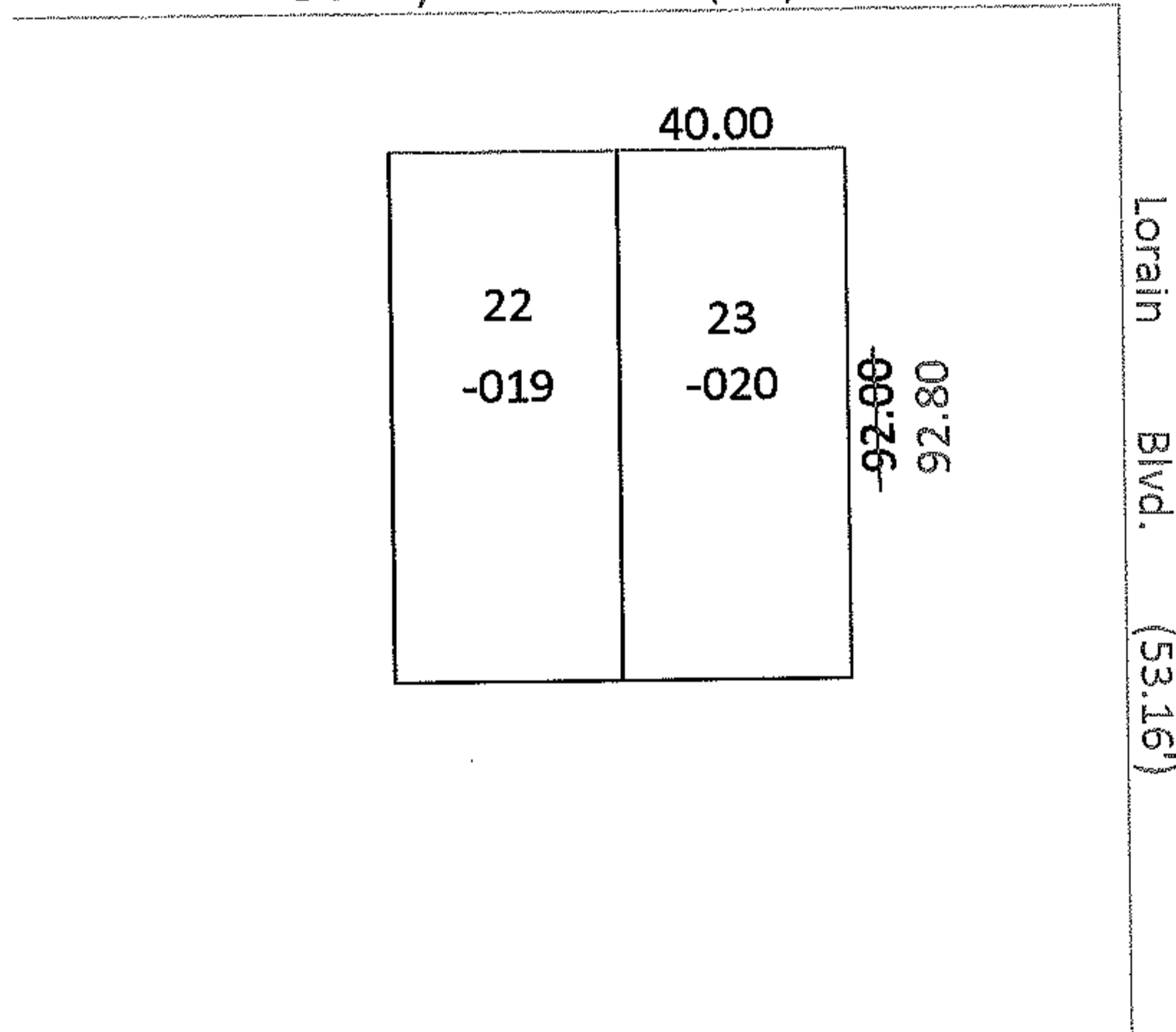
06-24-065-101-019, 020

~~40.00x92.00~~

40.00x92.80

Depth Corr per Deed

Dewey Avenue (50')



SPLITS/DEEDS PROCESSED

LORAIN COUNTY TAX MAP DEPARTMENT
226 MIDDLE AVE. ELYRIA, OHIO

SURVEYED BY: N/A
CLOSURE: N/A
MAP PAGE(S): 06-81
APPROVED BY: CJB DATE: 5/19/09
SCALE: 1"= 50' PRIOR INST.: 20080275348