

RASTER

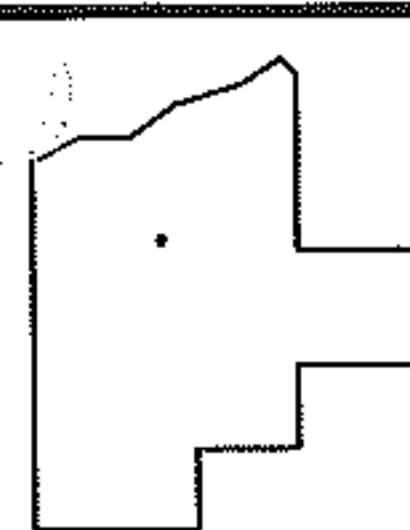
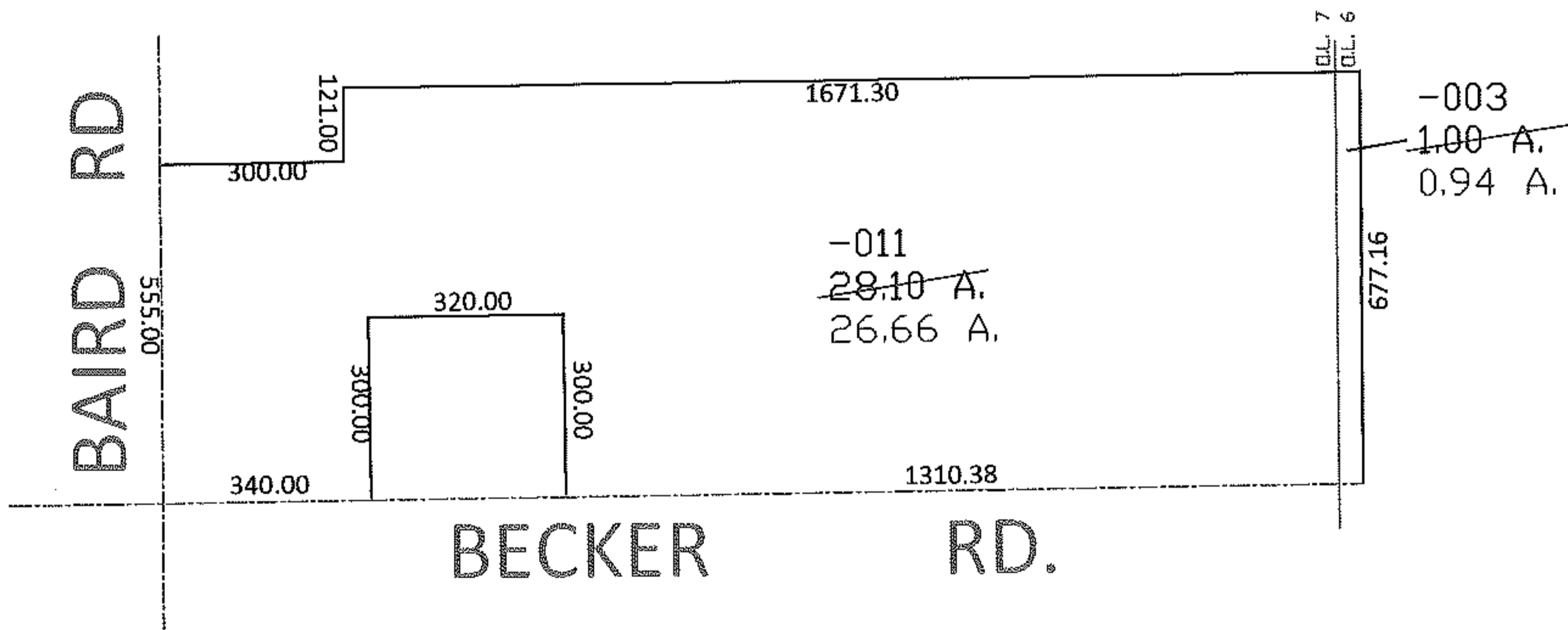
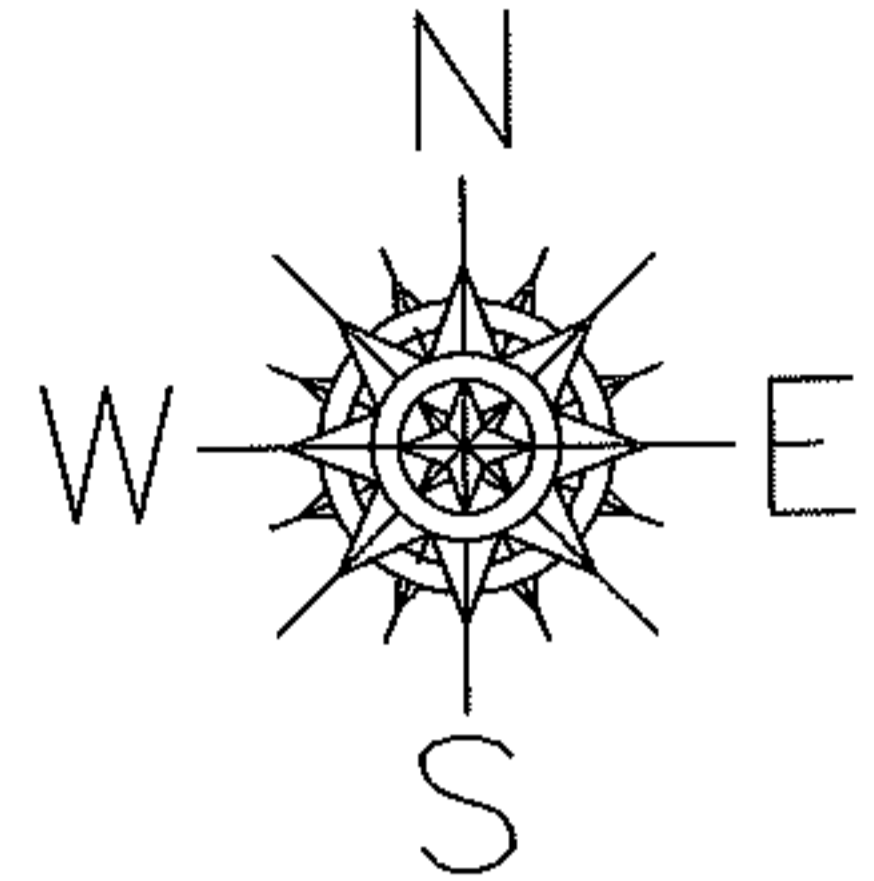
PARENT PARCEL: 08-12-007-000-011 & 08-12-006-000-003

09-01827-C

CHILD PARCEL: --SAME--

STARTING POINT: INT CL BAIRD RD AND BECKER RD

AC. CORR.
PER SURVEY
T. SIMON



SPLITS/DEEDS PROCESSED
LORAIN COUNTY TAX MAP DEPARTMENT
226 MIDDLE AVE. ELYRIA, OHIO

SURVEYED BY: THOMAS SIMON
CLOSURE: 1:10,000
MAP PAGE(S): 08-12-007-B, 08-12-006-B
APPROVED BY: DRH DATE: 5/18/2009
SCALE: 1" = 400 PRIOR INSTRUMENT: