

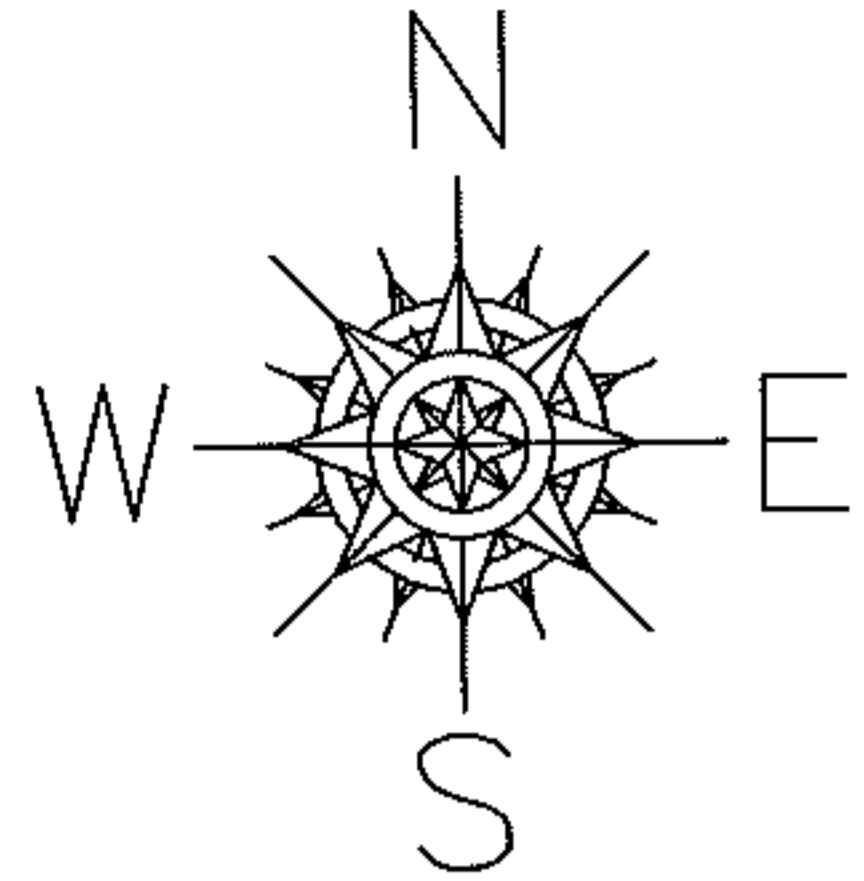
RASTER

PARENT PARCEL: 03-00-108-101-042

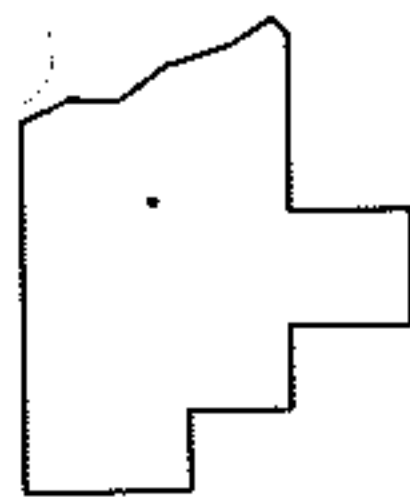
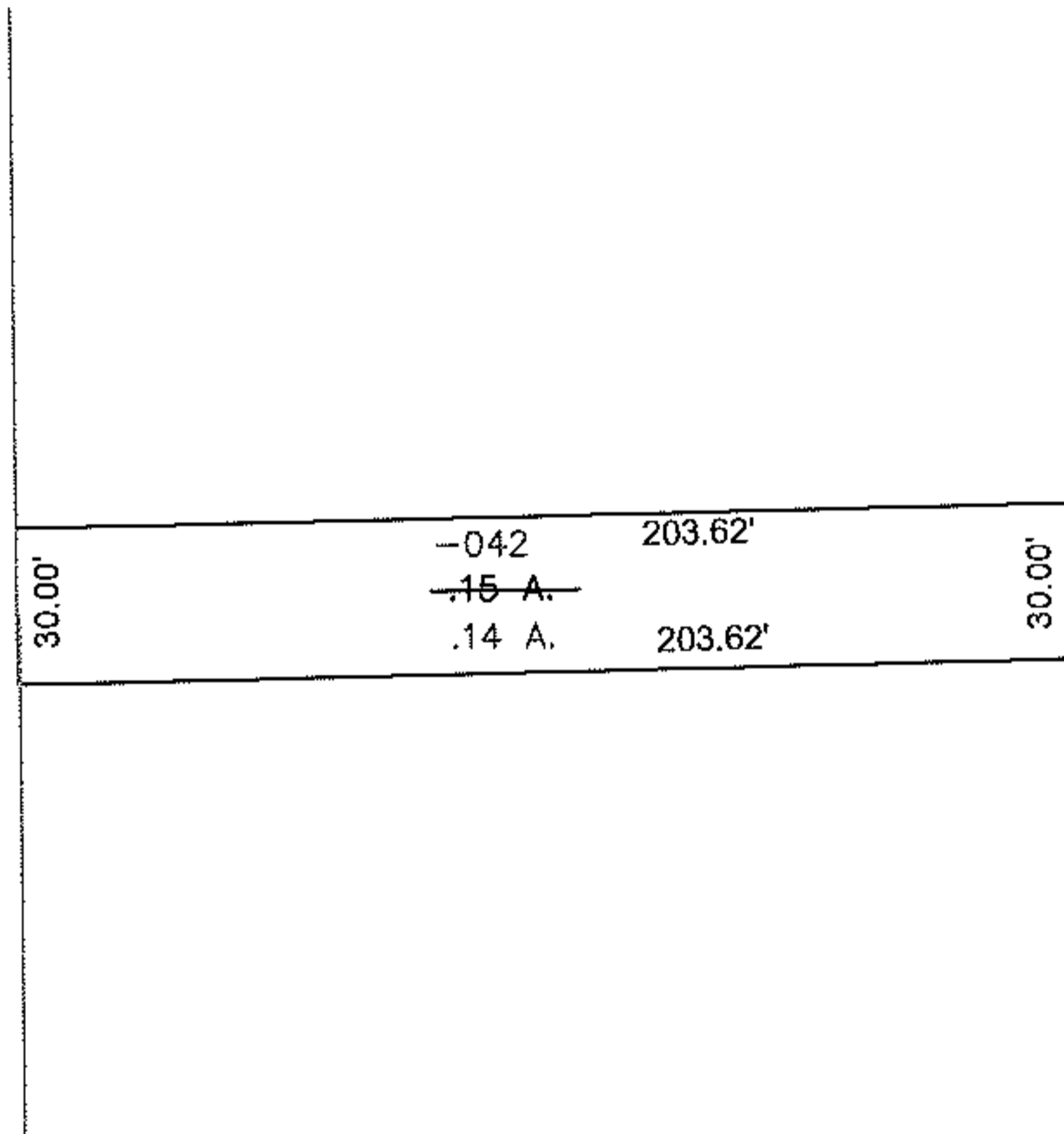
CHILD PARCEL: same

STARTING POINT: Int. of W line of OL 108 and N line of PPN -077

NO. 09-01823-C



MAP CORRECTION ONLY, PER DEED



SPLITS/DEEDS PROCESSED

LORAIN COUNTY TAX MAP DEPARTMENT
226 MIDDLE AVE. ELYRIA, OHIO

SURVEYED BY: n/a
 CLOSURE: 0.00:0000
 MAP PAGE(S): 03-00-108-A
 APPROVED BY: mbk DATE: 5/14/2009
 SCALE: 1" = 100' PRIOR INSTRUMENT: DV 538/734