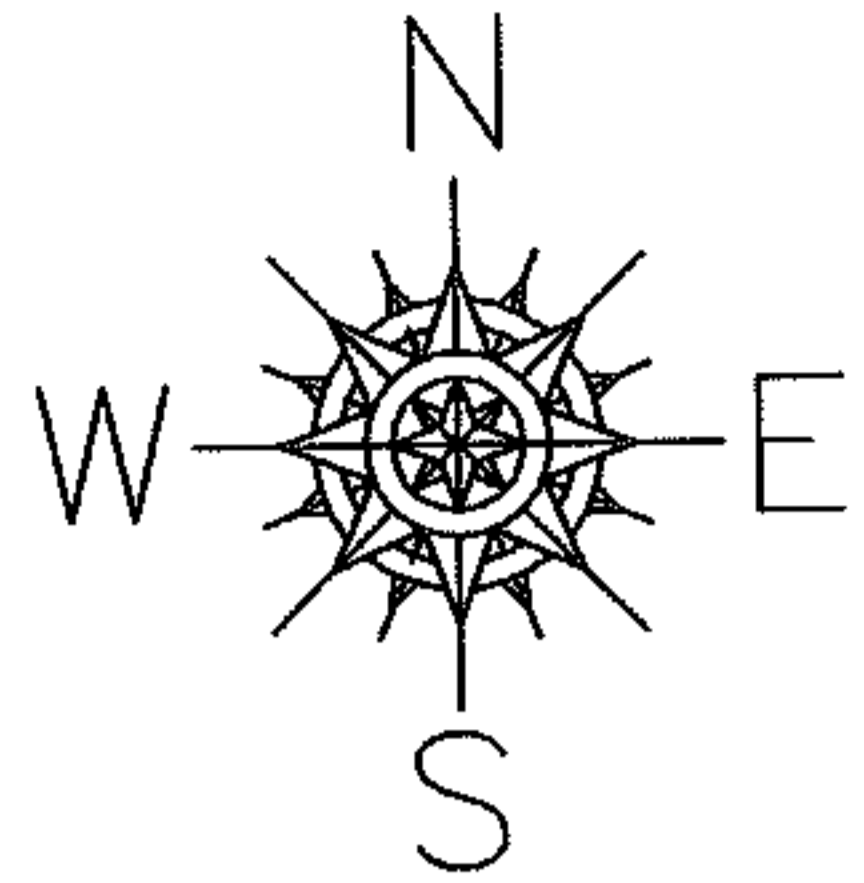


RASTER

PARENT PARCEL: 09-00-086-103-027
CHILD PARCEL: N/A
STARTING POINT: Westerly line of S. Pleasant St at Intrscn w/ south line of Lot 194

09-01819-C



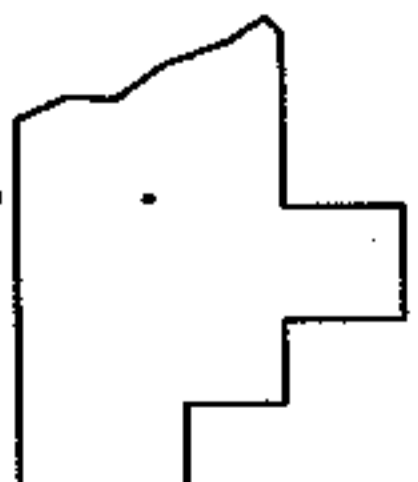
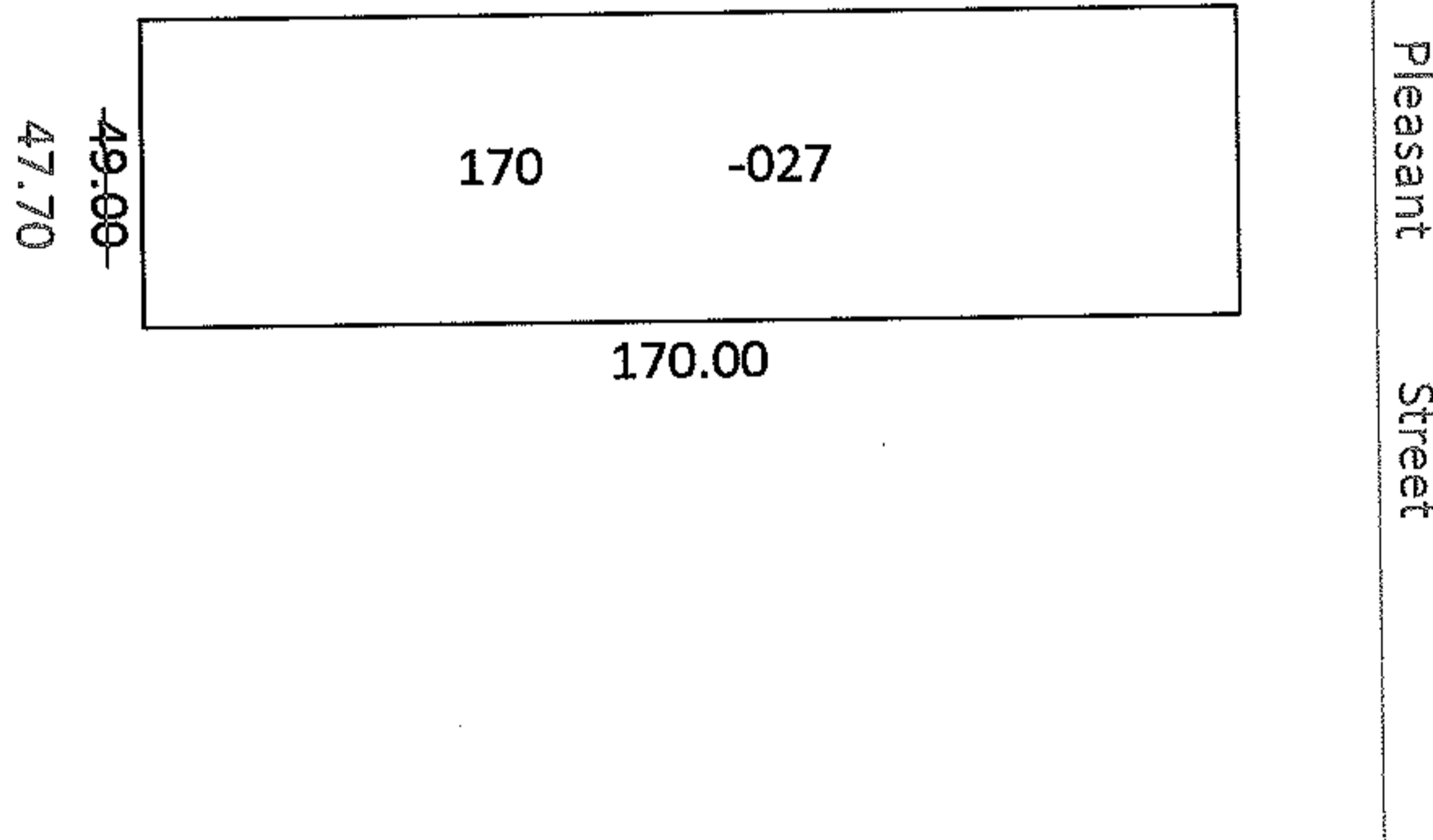
Frontage Correction

09-00-086-103-027

~~49.00x170.00~~

47.70x170.00

Frontage Corr per Deed



SPLITS/DEEDS PROCESSED

LORAIN COUNTY TAX MAP DEPARTMENT
226 MIDDLE AVE. ELYRIA, OHIO

SURVEYED BY: N/A
CLOSURE: 1: 435400000.00
MAP PAGE(S): 09-00-086A
APPROVED BY: CJB DATE: 5/18/09
SCALE: 1"= 50' PRIOR INST.: 20080276147