

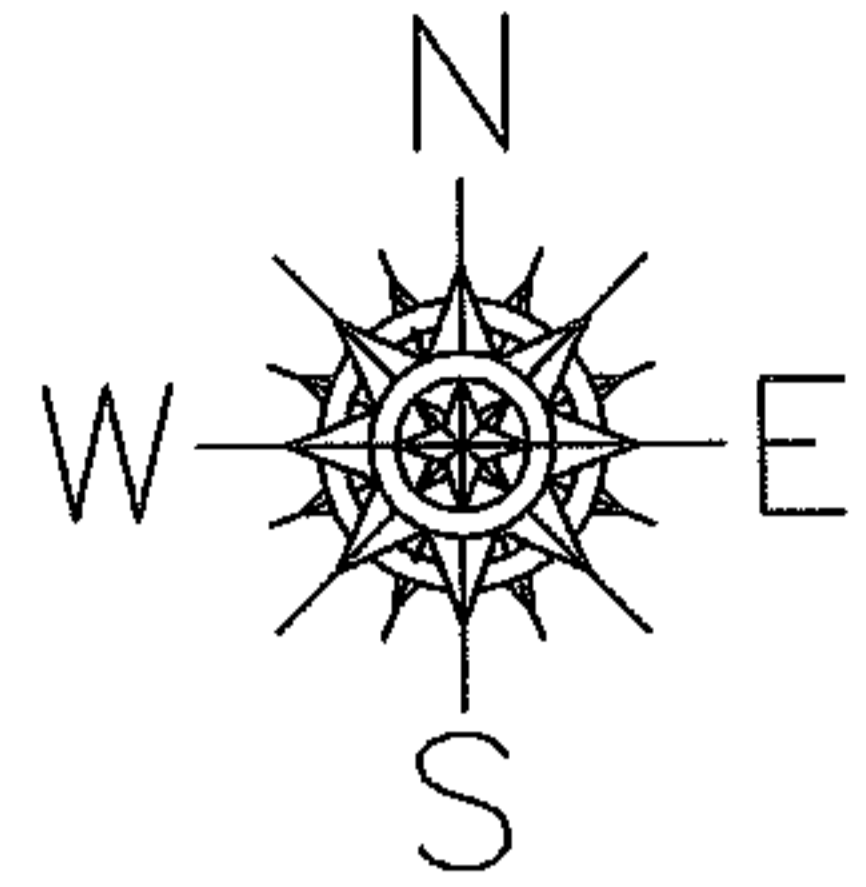
RASTER

PARENT PARCEL: 11-00-018-000-032, 033

CHILD PARCEL: N/A

STARTING POINT: On Cowley Road at South east corner of parcel number 6

09-01814-C



Frontage and Depth Correction

11-00-018-000-032, 033

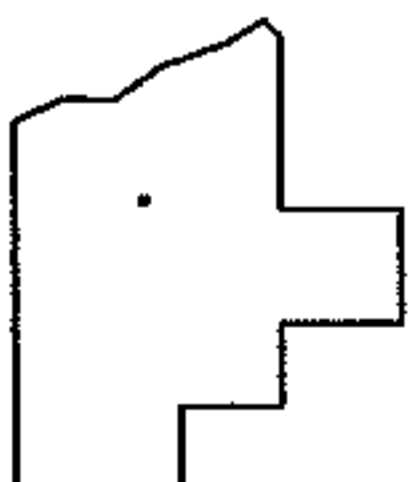
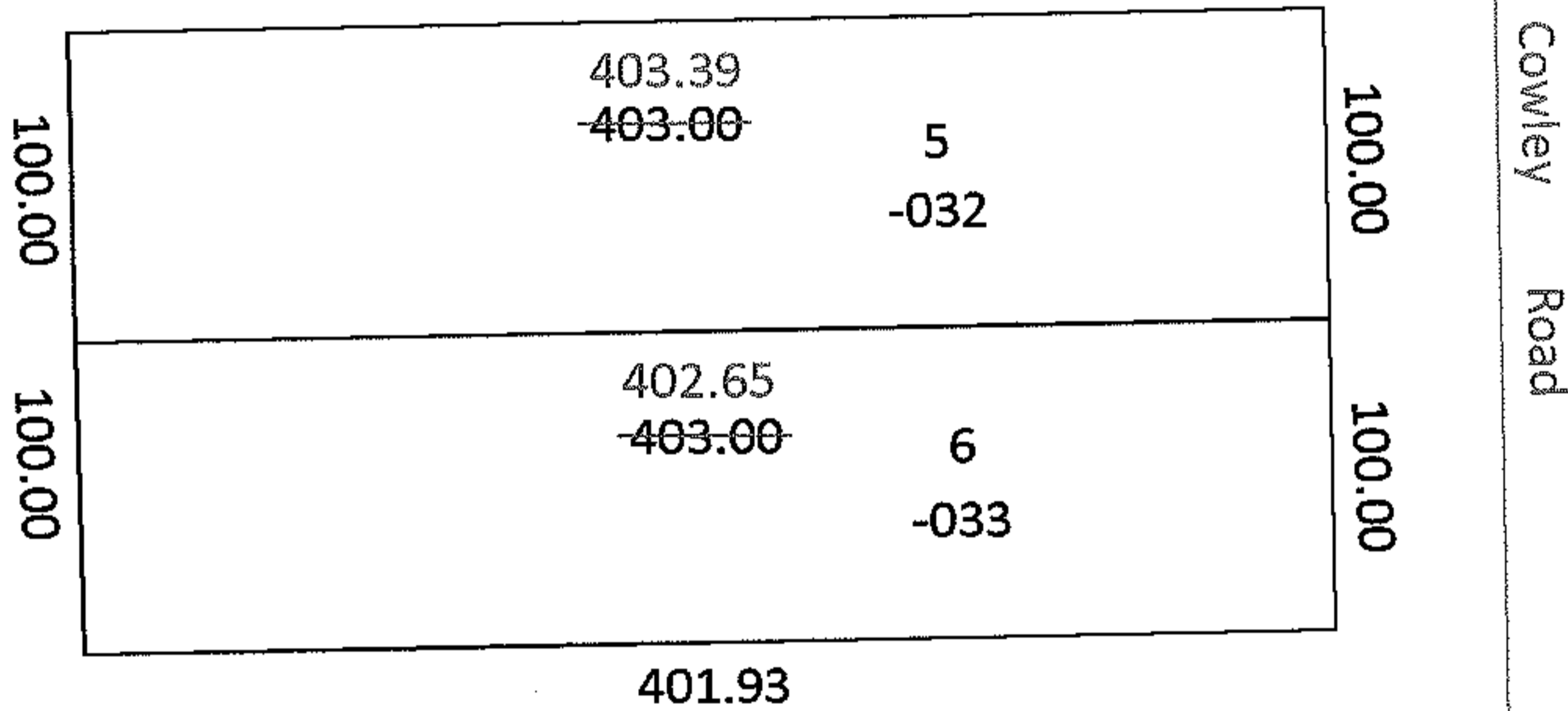
~~100.00x403~~

100.00x403.39

~~100.00x403~~

100.00x402.65

Correction per Deed



SPLITS/DEEDS PROCESSED

LORAIN COUNTY TAX MAP DEPARTMENT
226 MIDDLE AVE. ELYRIA, OHIO

SURVEYED BY: N/A

CLOSURE: 1:244,578 - 58,655

MAP PAGE(S): 11-00-018B

APPROVED BY: CJB DATE: 05/06/09

SCALE: 1"= 100 PRIOR INST.: 20020857287