

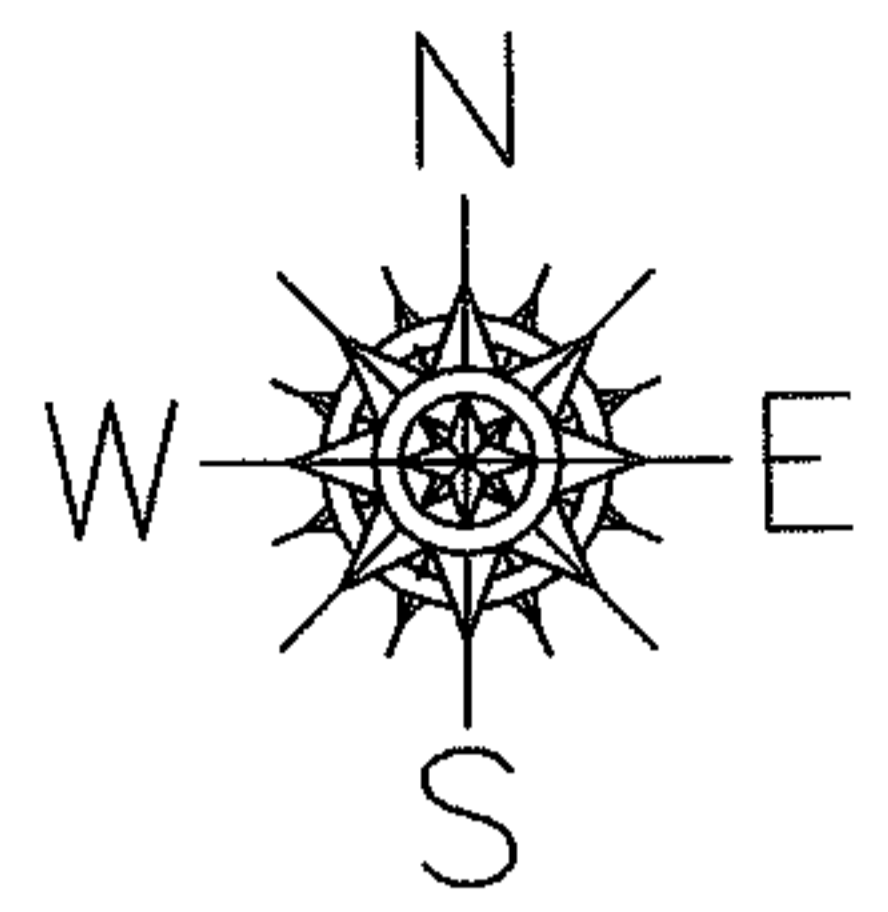
RASTER

PARENT PARCEL: 04-00-024-104-005

CHILD PARCEL: N/A

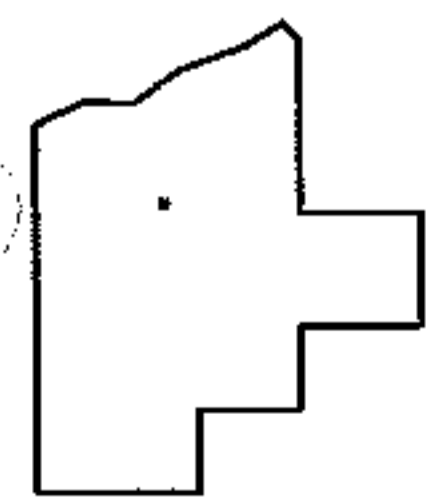
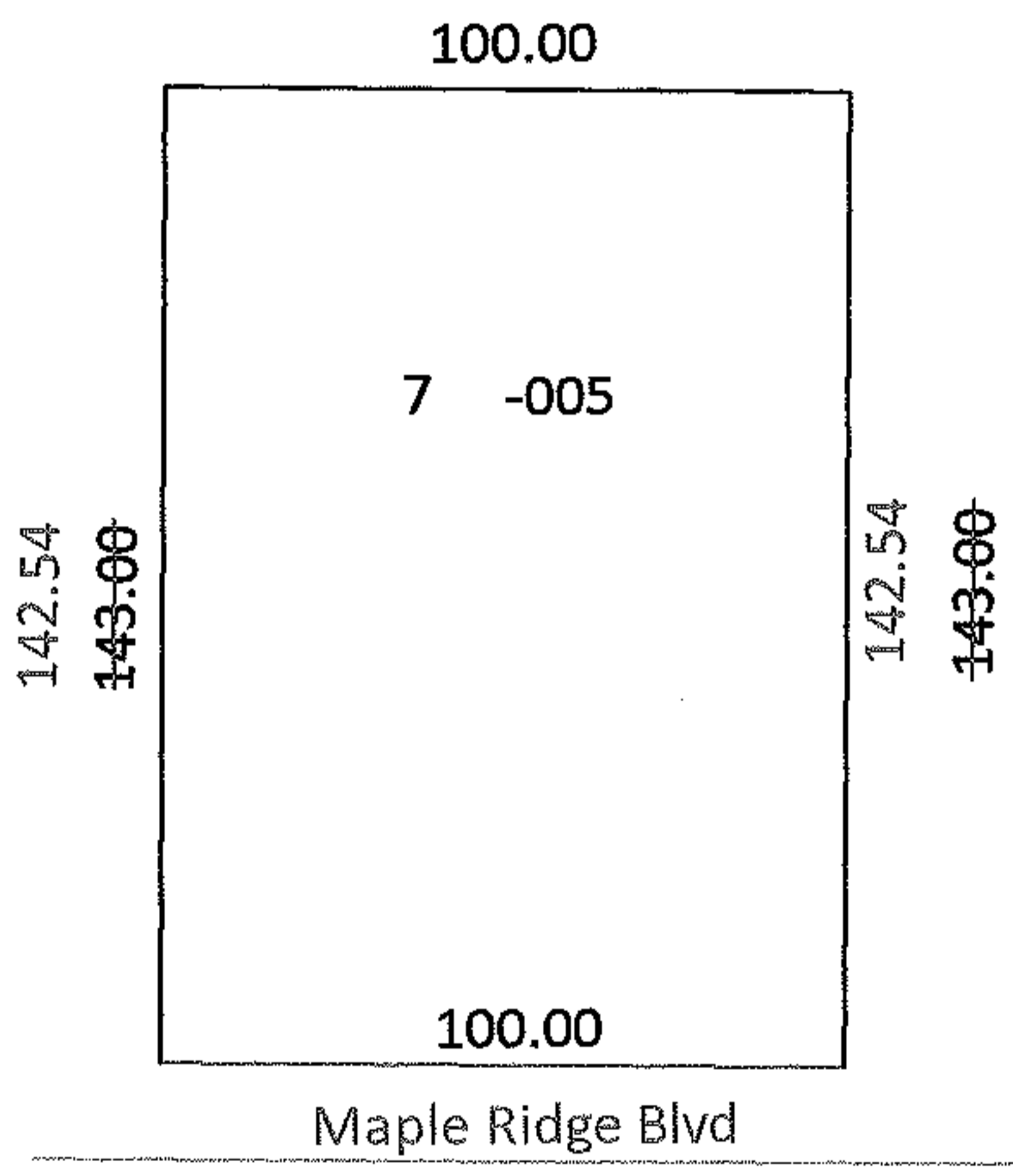
STARTING POINT: Southwest corner of Sublot Seven

09-01810-C



Frontage and Depth Correction

04-00-024-104-005  
~~100.00x143.00~~  
100.00x142.54  
Correction per Deed



SPLITS/DEEDS PROCESSED

LORAIN COUNTY TAX MAP DEPARTMENT  
226 MIDDLE AVE. ELYRIA, OHIO

SURVEYED BY: Alexander Kanareff

CLOSURE: 1:48508

MAP PAGE(S): 04-00-024D

APPROVED BY: CJB DATE: 4/29/09

SCALE: 1"= 50' PRIOR INST.: 20050106647