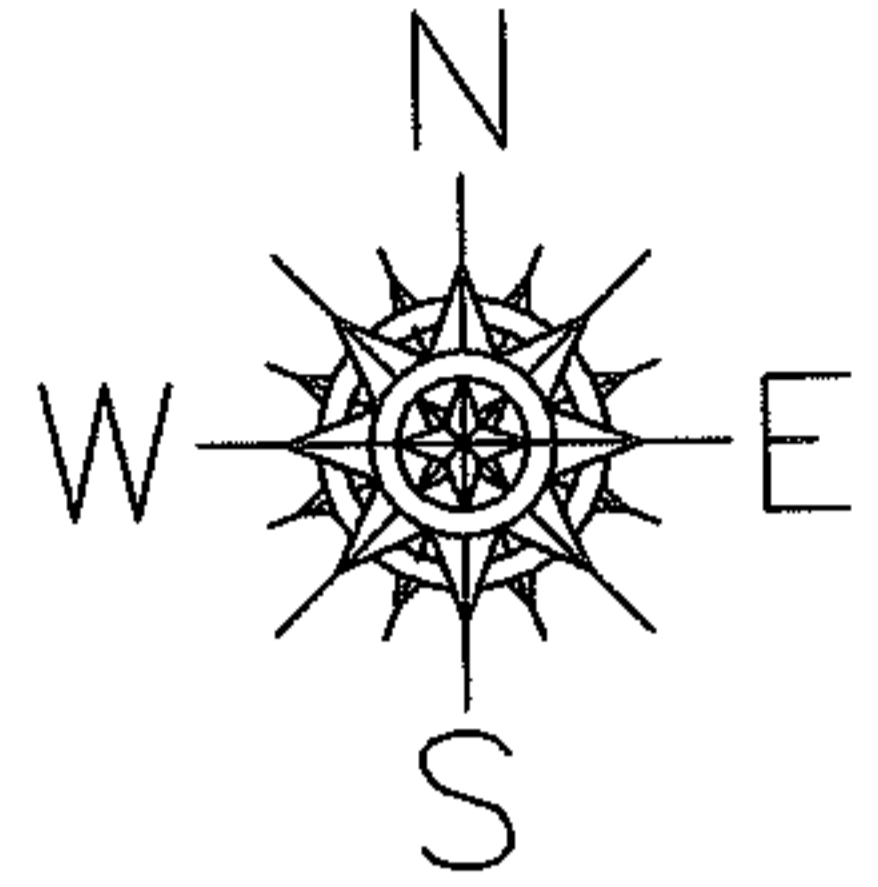


RASTER

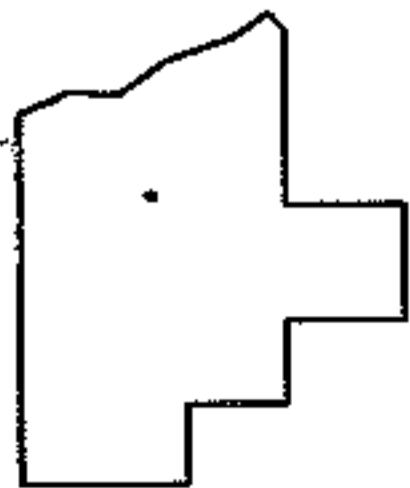
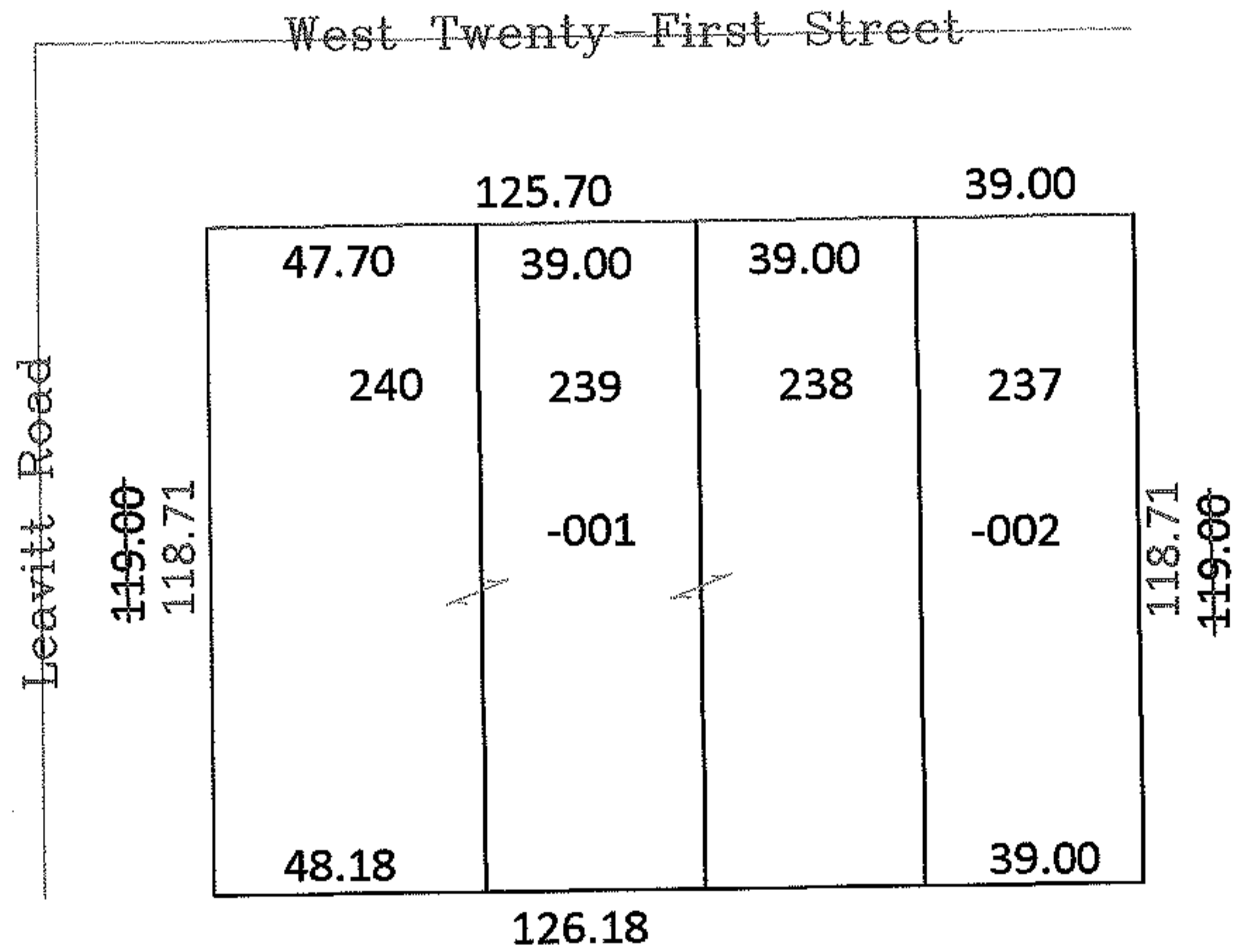
PARENT PARCEL: 02-02-024-113-001, 002  
CHILD PARCEL: N/A  
STARTING POINT: Southeast corner at Intersection of Leavitt Rd and West 21st St.

09-01809-C



Frontage and Depth Correction

02-02-024-113-001, 002  
~~125.70x119.00~~  
125.70x118.71  
Correction per Deed



SPLITS/DEEDS PROCESSED

LORAIN COUNTY TAX MAP DEPARTMENT  
226 MIDDLE AVE. ELYRIA, OHIO

SURVEYED BY: N/A  
CLOSURE: 1:579708  
MAP PAGE(S): 02-02-024A  
APPROVED BY: CJB DATE: 04/29/09  
SCALE: 1"=50' PRIOR INST.: 20070208226