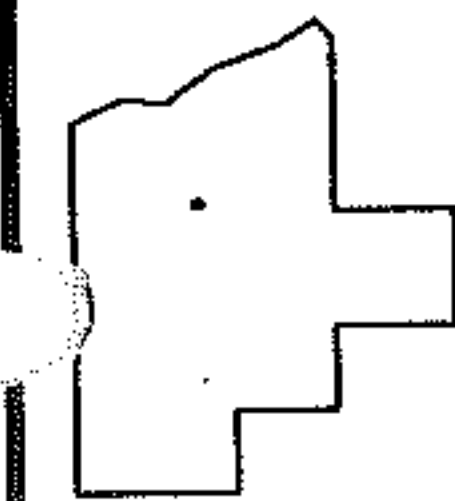
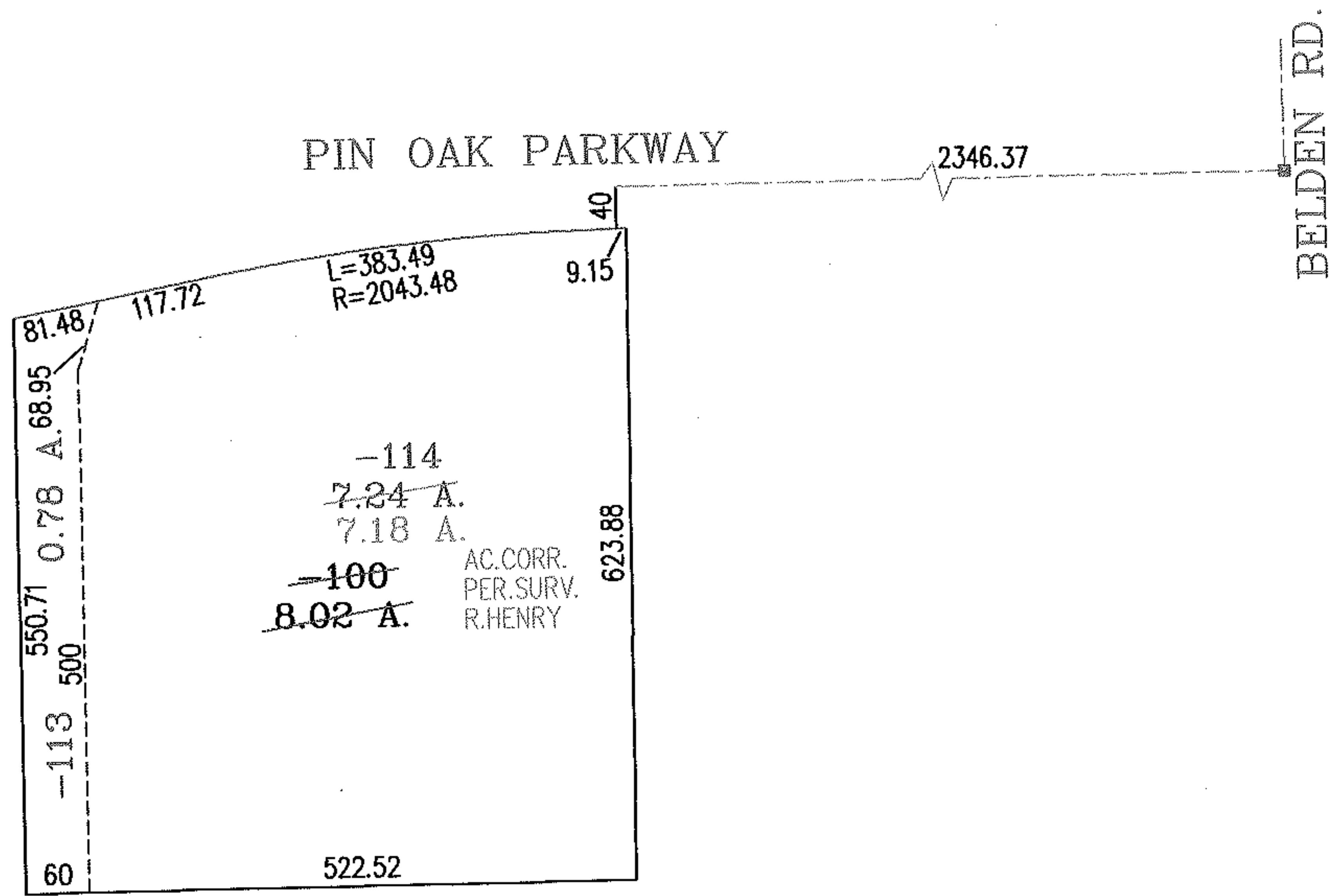
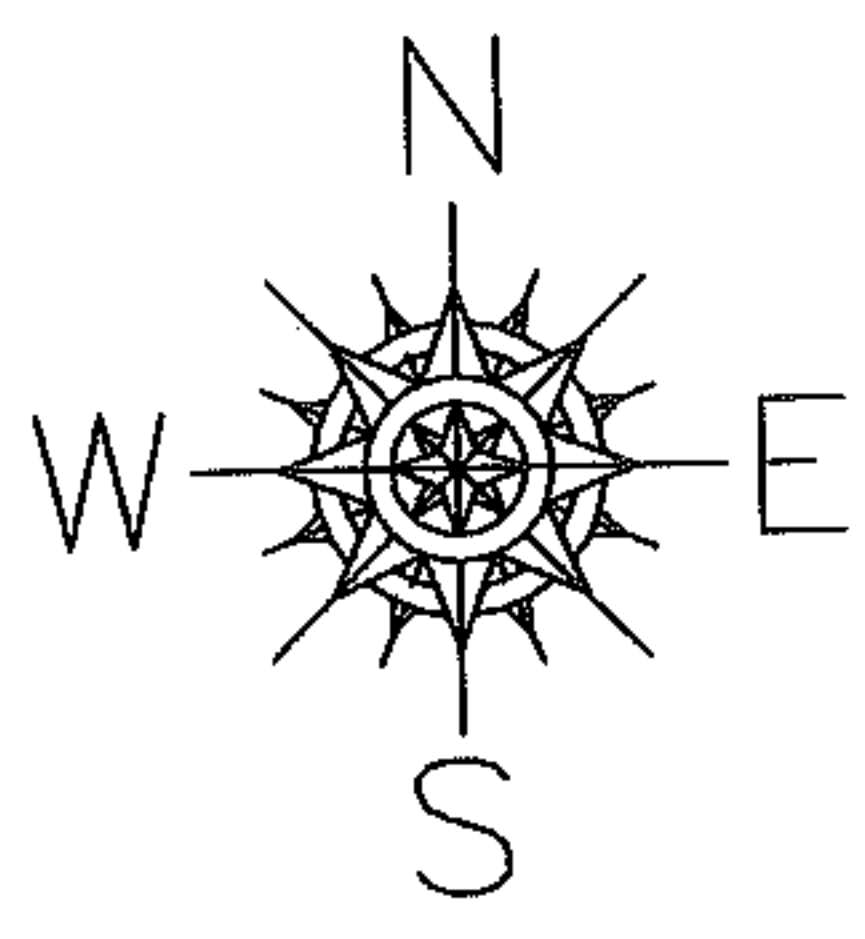


RASTER

PARENT PARCEL: 04-00-008-104-100
CHILD PARCEL: 04-00-008-104-113,-114
STARTING POINT: INTERSECTION OF C/L OF PIN OAK PARKWAY AND C/L OF BELDEN RD.

NO. 01801



SPLITS/DEEDS PROCESSED
LORAIN COUNTY TAX MAP DEPARTMENT
226 MIDDLE AVE. ELYRIA, OHIO

SURVEYED BY: RAY HENRY
CLOSURE: .00:10,000
MAP PAGE(S): 04-00-008-H
APPROVED BY: RRM DATE: 12-15-04
SCALE: 1" = 200 PRIOR INSTRUMENT: 200412891