

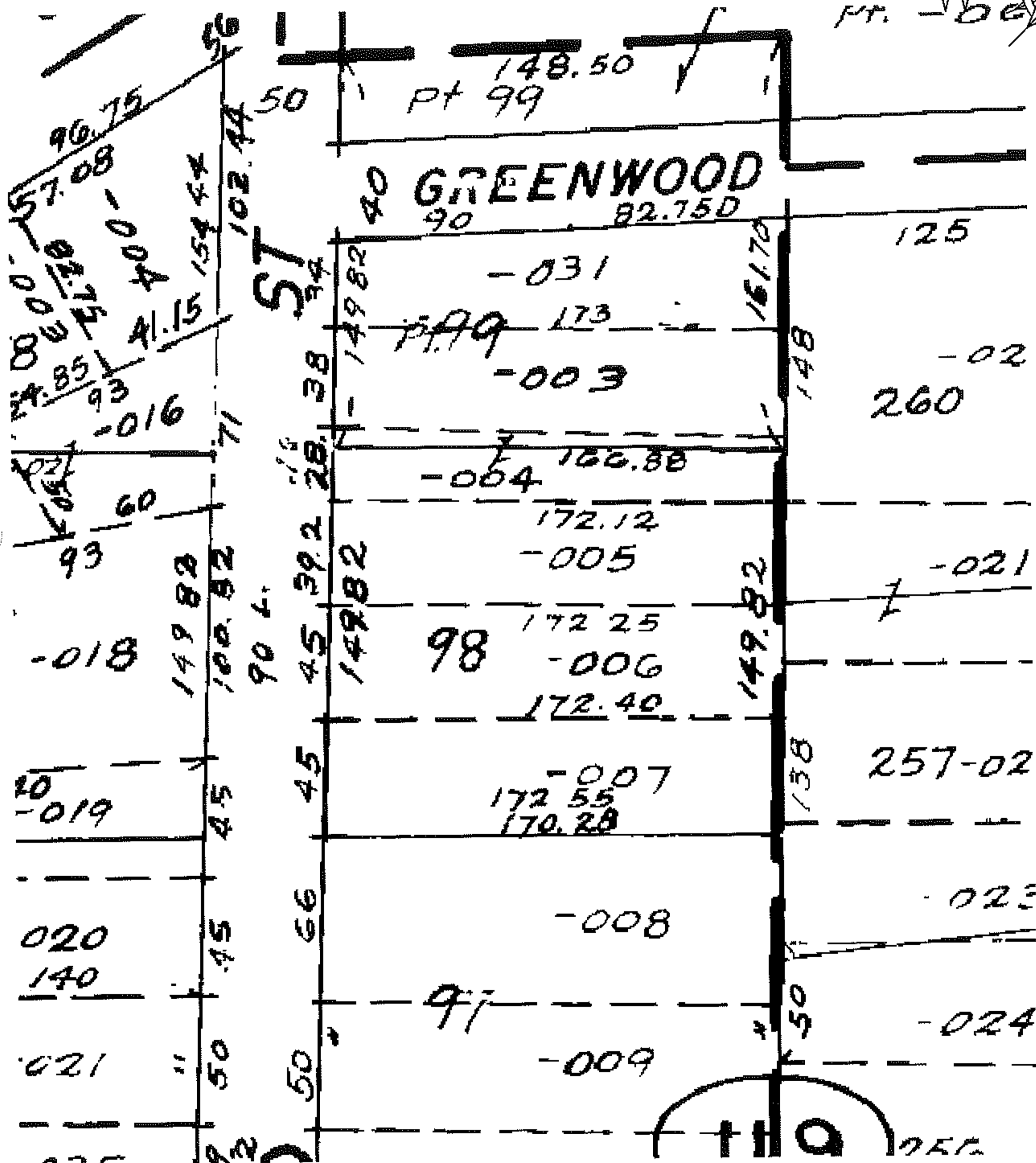
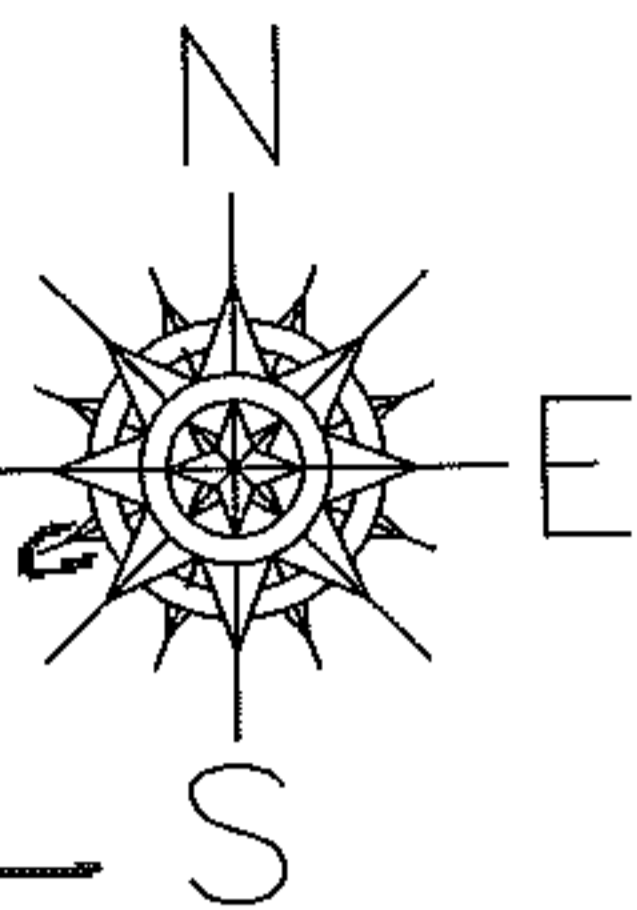
PARENT PARCEL: 05-00-023-119-005

CHILD PARCEL: --SAME--

09-01797-C

STARTING POINT:

FRONTAGE AND DEPTH CORR PER DEED
NO MAP CORR



SPLITS/DEEDS PROCESSED

LORAIN COUNTY TAX MAP DEPARTMENT
226 MIDDLE AVE. ELYRIA, OHIO

SURVEYED BY: N/A

CLOSURE: N/A

MAP PAGE(S): 05-00-023-B

APPROVED BY: DRH DATE: 6/15/2009

SCALE: NOT TO SCALE PRIOR INST.: 20070215279