

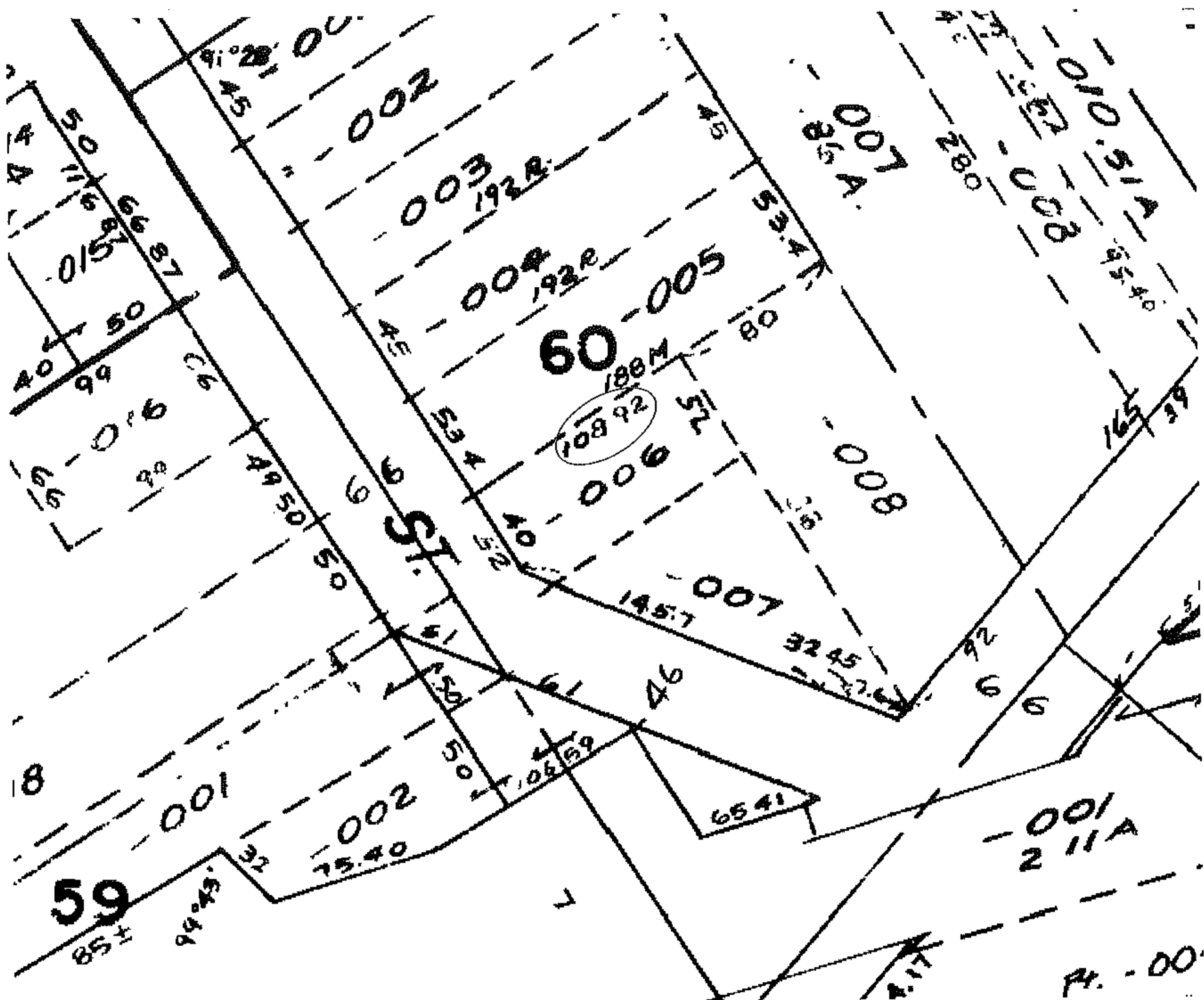
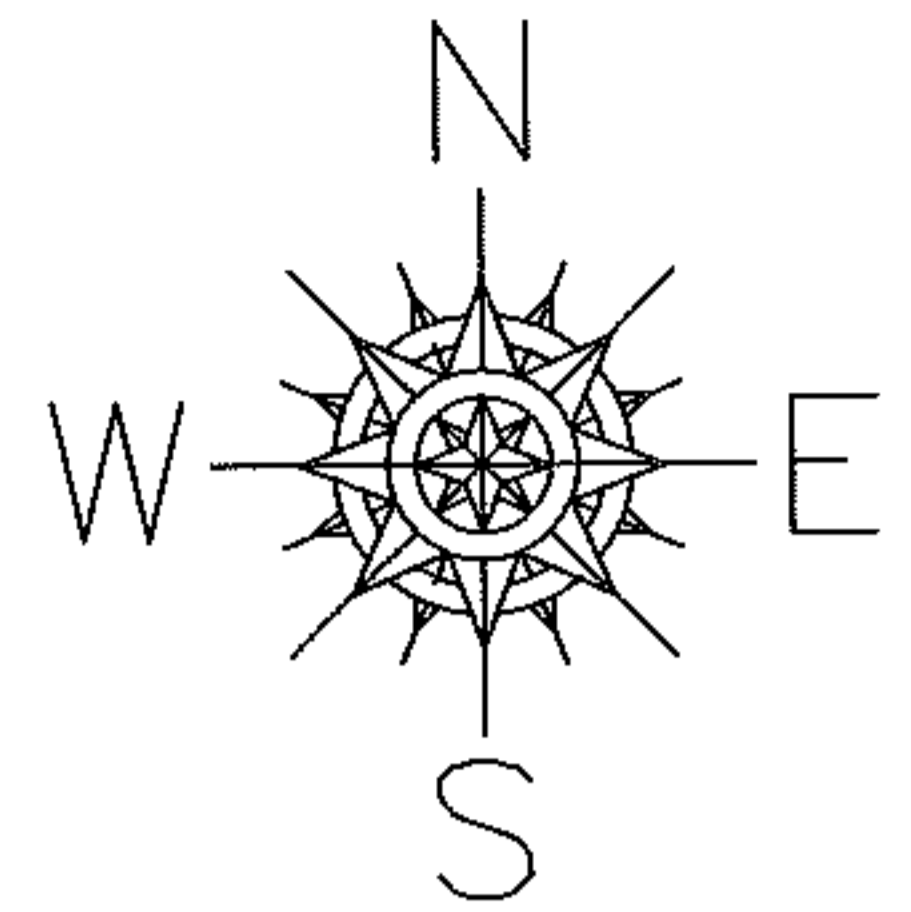
PARENT PARCEL: 06-25-060-000-006

CHILD PARCEL: --SAME--

STARTING POINT: INT CL EAST RIVER AND RIDGE ST.

09-01795-C

DEPTH CORR PER DEED & MAP NO MAP CORRECTION



SPLITS/DEEDS PROCESSED

LORAIN COUNTY TAX MAP DEPARTMENT
226 MIDDLE AVE. ELYRIA, OHIO

SURVEYED BY: N/A

CLOSURE: N/A

MAP PAGE(S): 06-103

APPROVED BY: DRH DATE: 6/15/2009

SCALE: NOT TO SCALE PRIOR INST.: 20080270683