

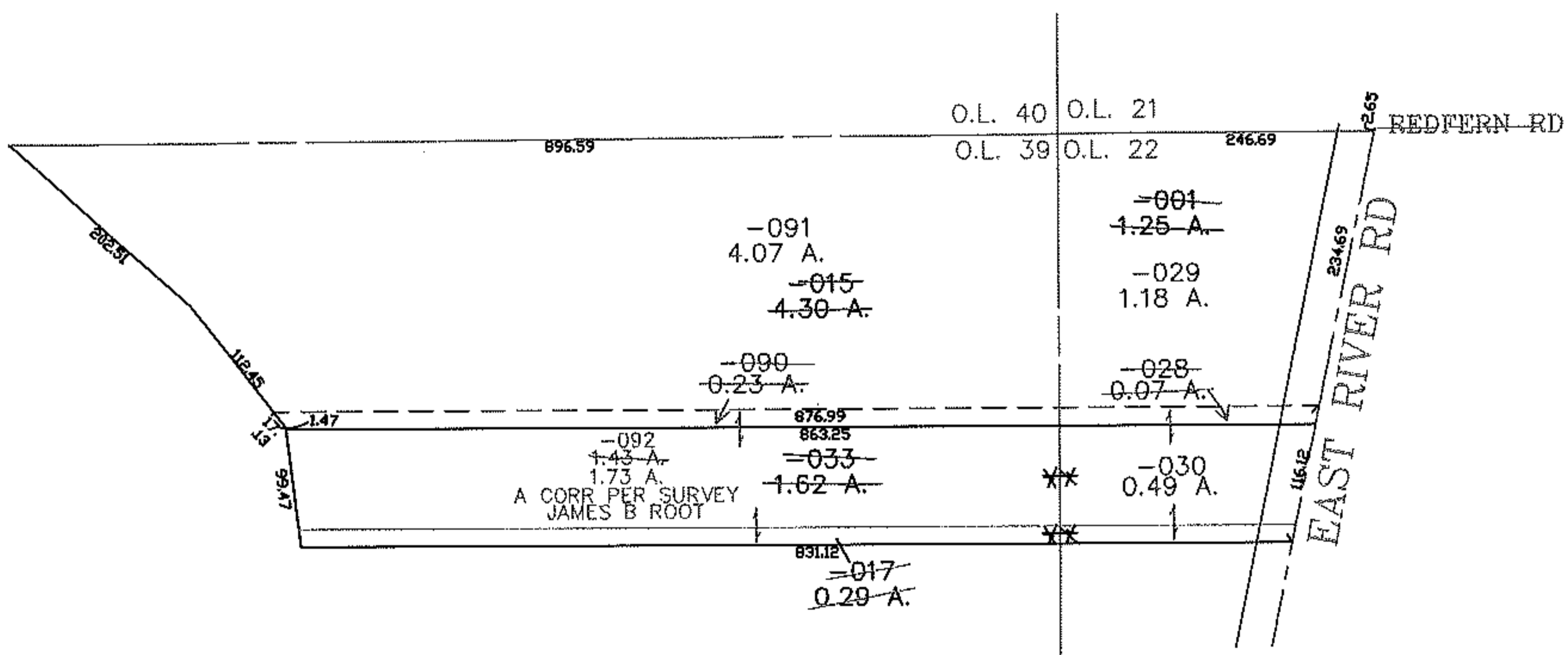
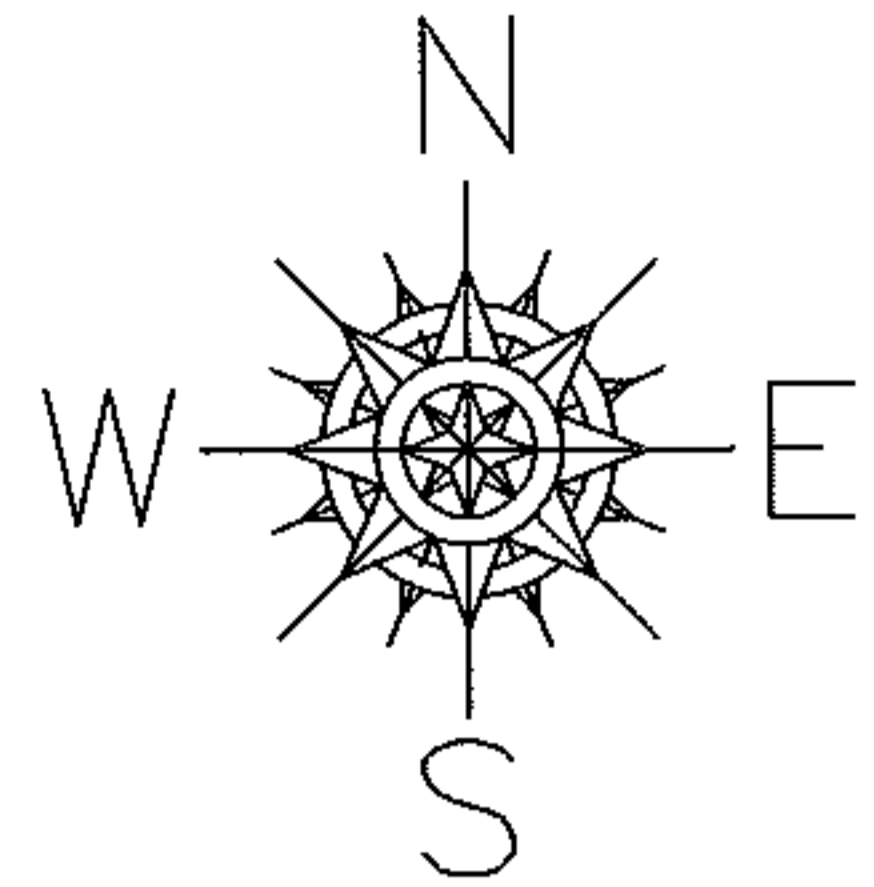
PARENT PARCEL: 12-00-039-000-017

CHILD PARCEL: --NONE--

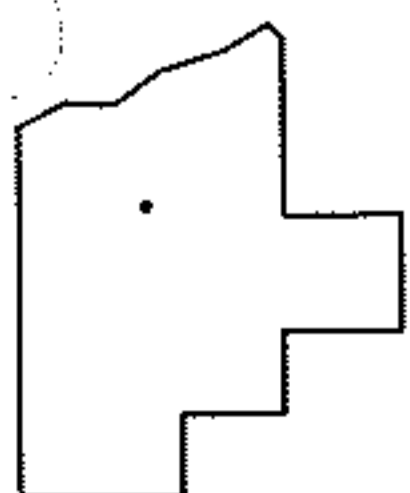
STARTING POINT: CENTERLINE OF EAST RIVER RD & REDFERN RD

09 01784-C

DROP FROM DUP



12-00-039-000-017 WAS DROPPED FROM DUP BY PINK TICKET 09-01784-C



SPLITS/DEEDS PROCESSED
LORAIN COUNTY TAX MAP DEPARTMENT
226 MIDDLE AVE. ELYRIA, OHIO

SURVEYED BY: JAMES B ROOT
CLOSURE: 0.00 : 10.00
MAP PAGE(S): 12-00-039-B
APPROVED BY: DRH DATE: 6/15/2009
SCALE: 1" = 200 PRIOR INSTRUMENT: 20040008283