

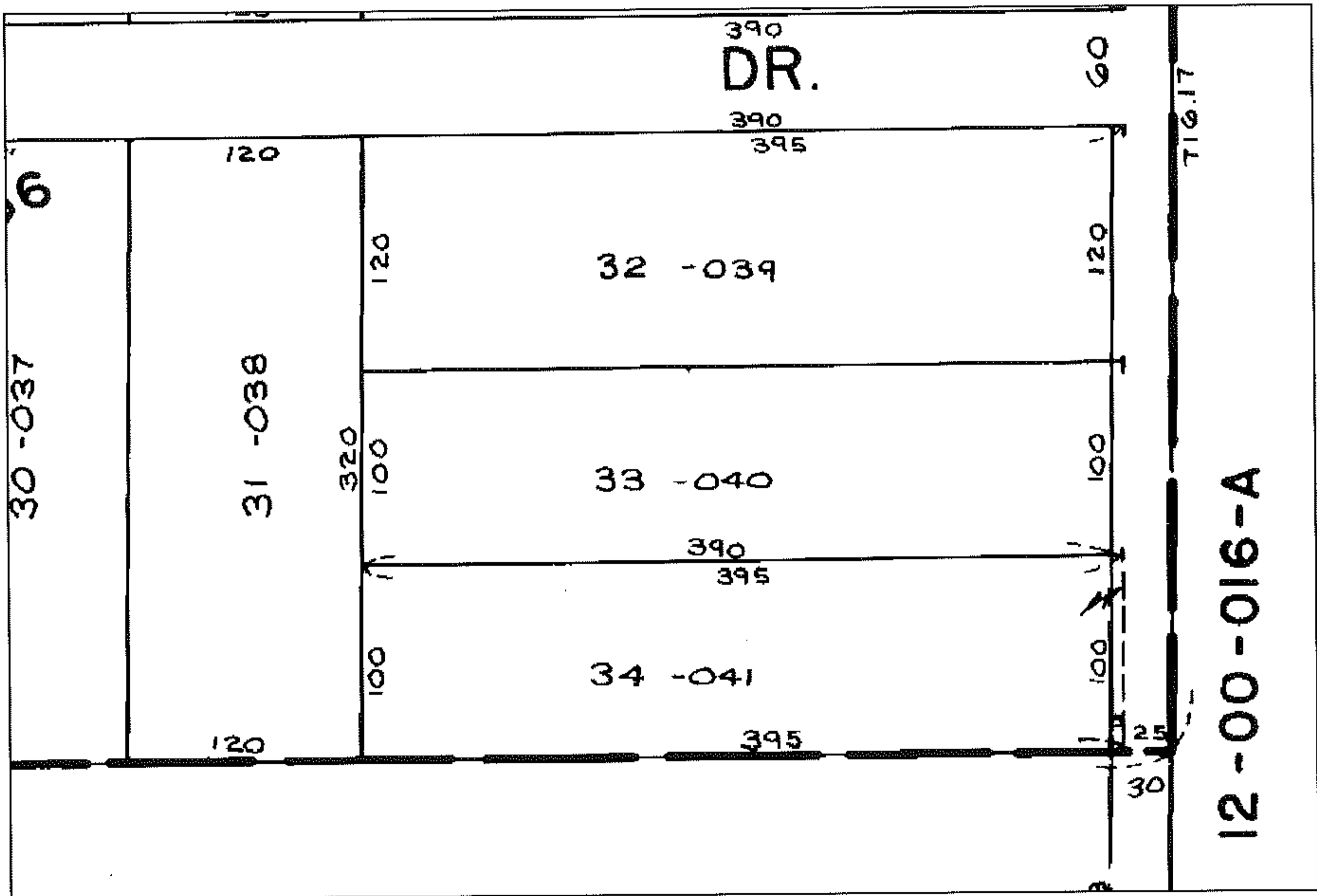
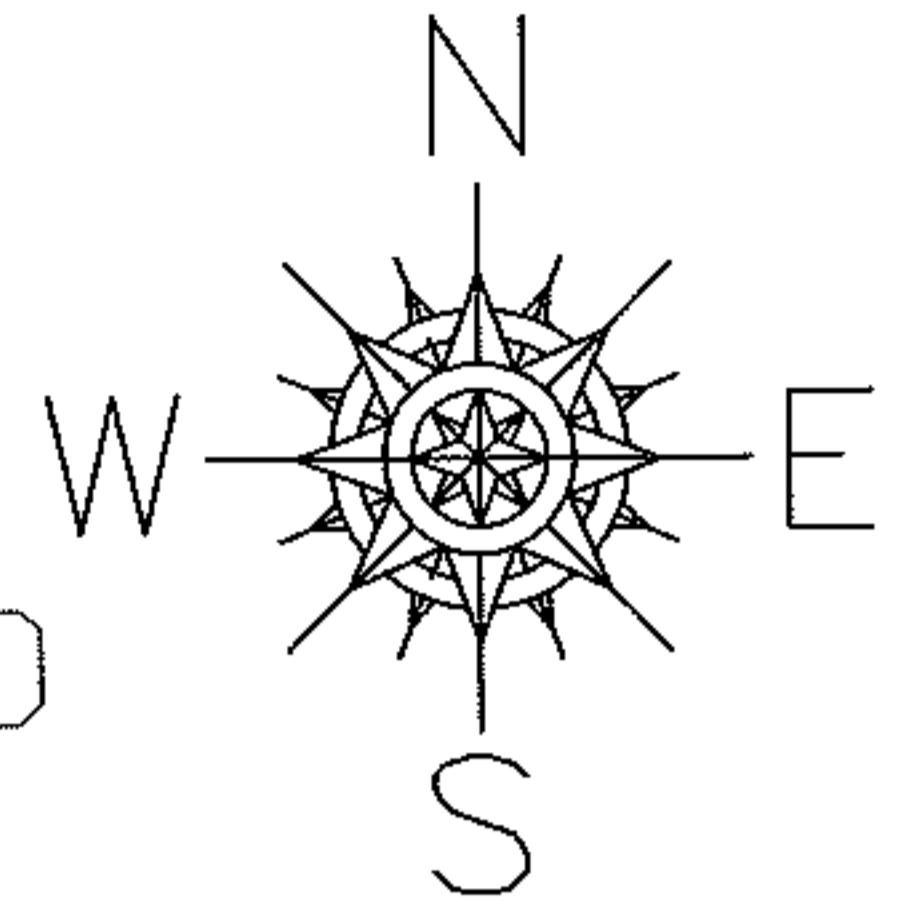
PARENT PARCEL: 12-00-025-000-039

CHILD PARCEL: --SAME--

STARTING POINT: S/L 32 IN CHECK ALLOTMENT V 16 P 36

09-01779-C

NO MAP CORRECTION  
DEPTH CORR PER MAP AND DEED



SPLITS/DEEDS PROCESSED

LORAIN COUNTY TAX MAP DEPARTMENT  
226 MIDDLE AVE. ELYRIA, OHIO

SURVEYED BY: N/A

CLOSURE: N/A

MAP PAGE(S): 12-00-025-B

APPROVED BY: DRH DATE: 6/15/2009

SCALE: NOT TO SCALE PRIOR INSTRUMENT: 19980579855