

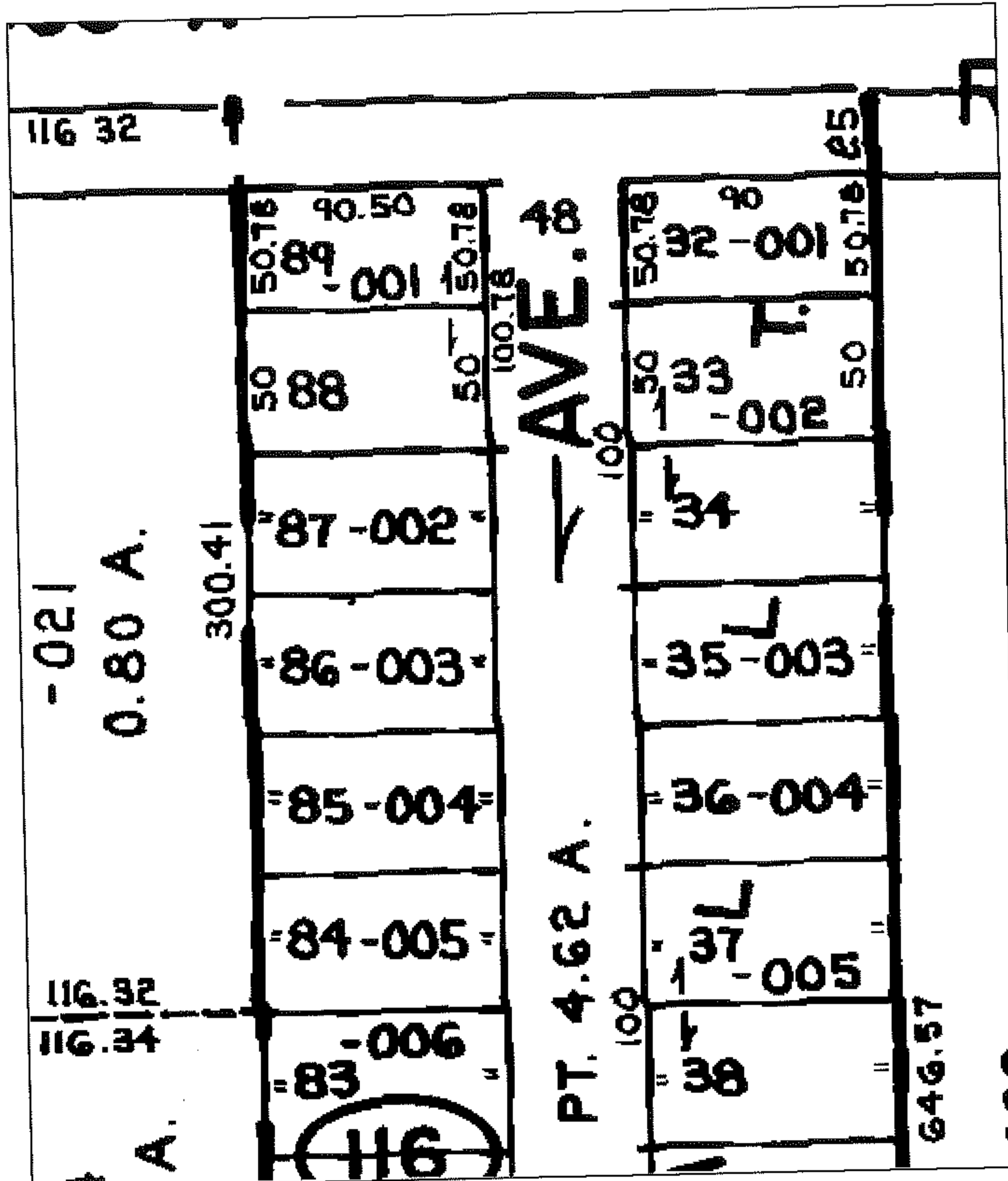
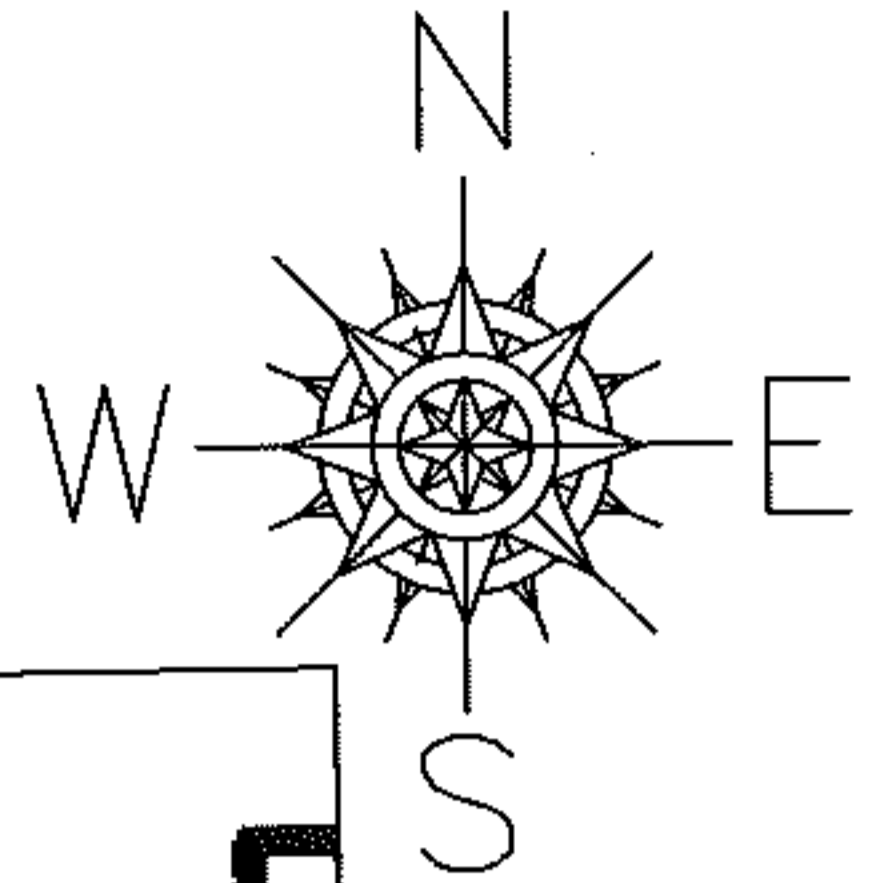
PARENT PARCEL: 03-00-033-116-002 & -003

CHILD PARCEL: --SAME--

STARTING POINT: S/L 86 & 87 IN COVE BEACH ALLOTMENT V 11 PAGE 11

09-01778-C

DEPTH CORR PER DEED & MAP
NO MAP CORRECTION



SPLITS/DEEDS PROCESSED

LORAIN COUNTY TAX MAP DEPARTMENT
226 MIDDLE AVE. ELYRIA, OHIO

SURVEYED BY: N/A
 CLOSURE: N/A
 MAP PAGE(S): 03-00-033-A
 APPROVED BY: DRH DATE: 6/15/2009
 SCALE: 1" = 100' PRIOR INSTRUMENT: 20090286718