

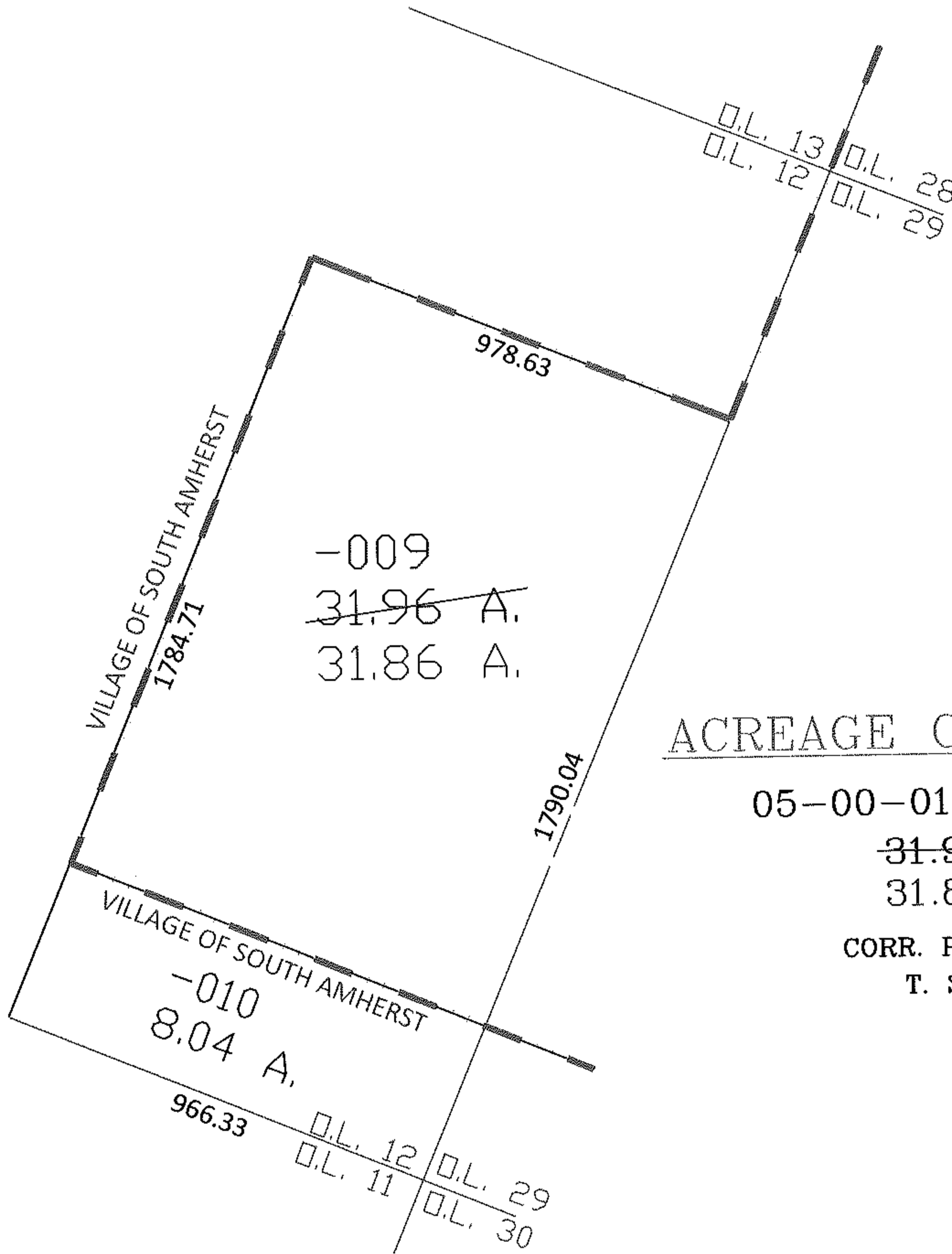
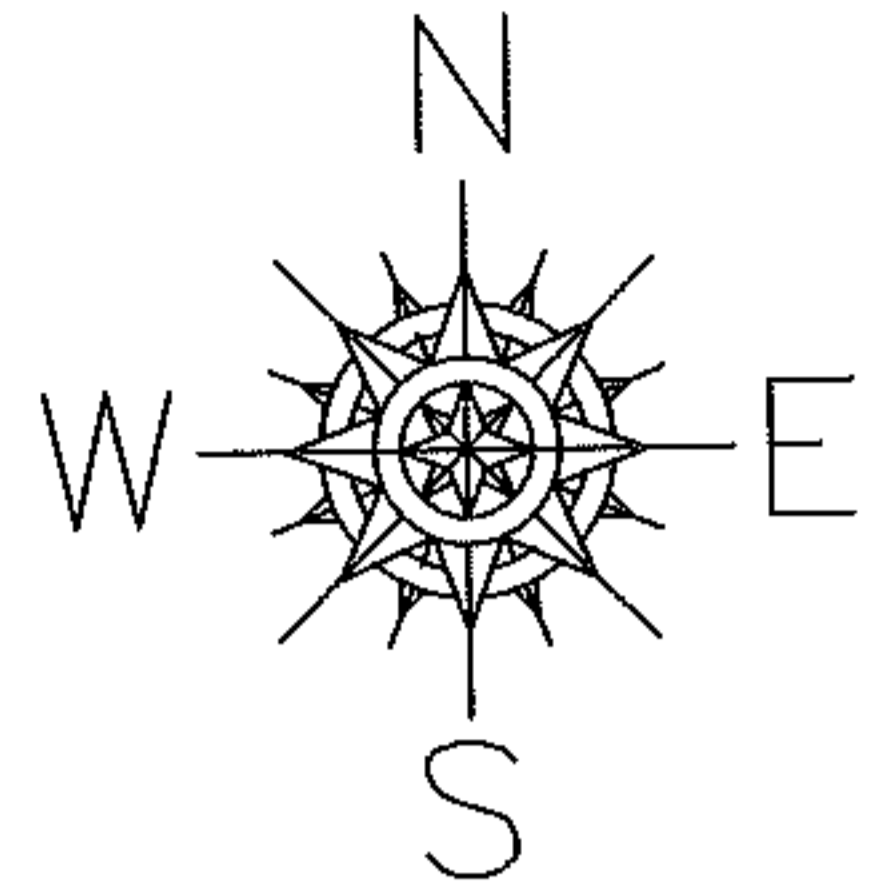
RASTER

PARENT PARCEL: 05-00-012-105-009, 05-00-012-105-010

CHILD PARCEL: --SAME--

STARTING POINT: INT NE LINE OF O.L. 12 & NW CORNER OF O.L. 29

09-01771-A



-009  
~~31.96 A.~~  
31.86 A.

VILLAGE OF SOUTH AMHERST  
-010  
8.04 A.

ACREAGE CORRECTION

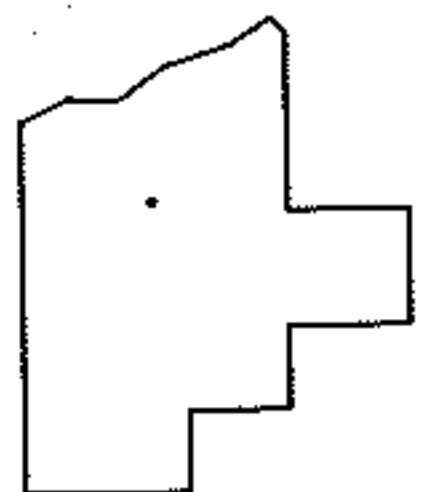
05-00-012-105-009

~~31.96 A.~~

31.86 A.

CORR. PER SURV.

T. SIMON



SPLITS/DEEDS PROCESSED  
LORAIN COUNTY TAX MAP DEPARTMENT  
226 MIDDLE AVE. ELYRIA, OHIO

SURVEYED BY: THOMAS A. SIMON

CLOSURE: 1:10,000

MAP PAGE(S): 05-00-012-B

APPROVED BY: DRH DATE: 2/23/2009

SCALE: 1" = 400 PRIOR INSTRUMENT: OR 1423/727