

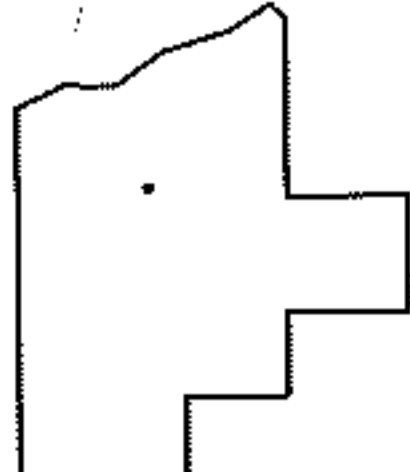
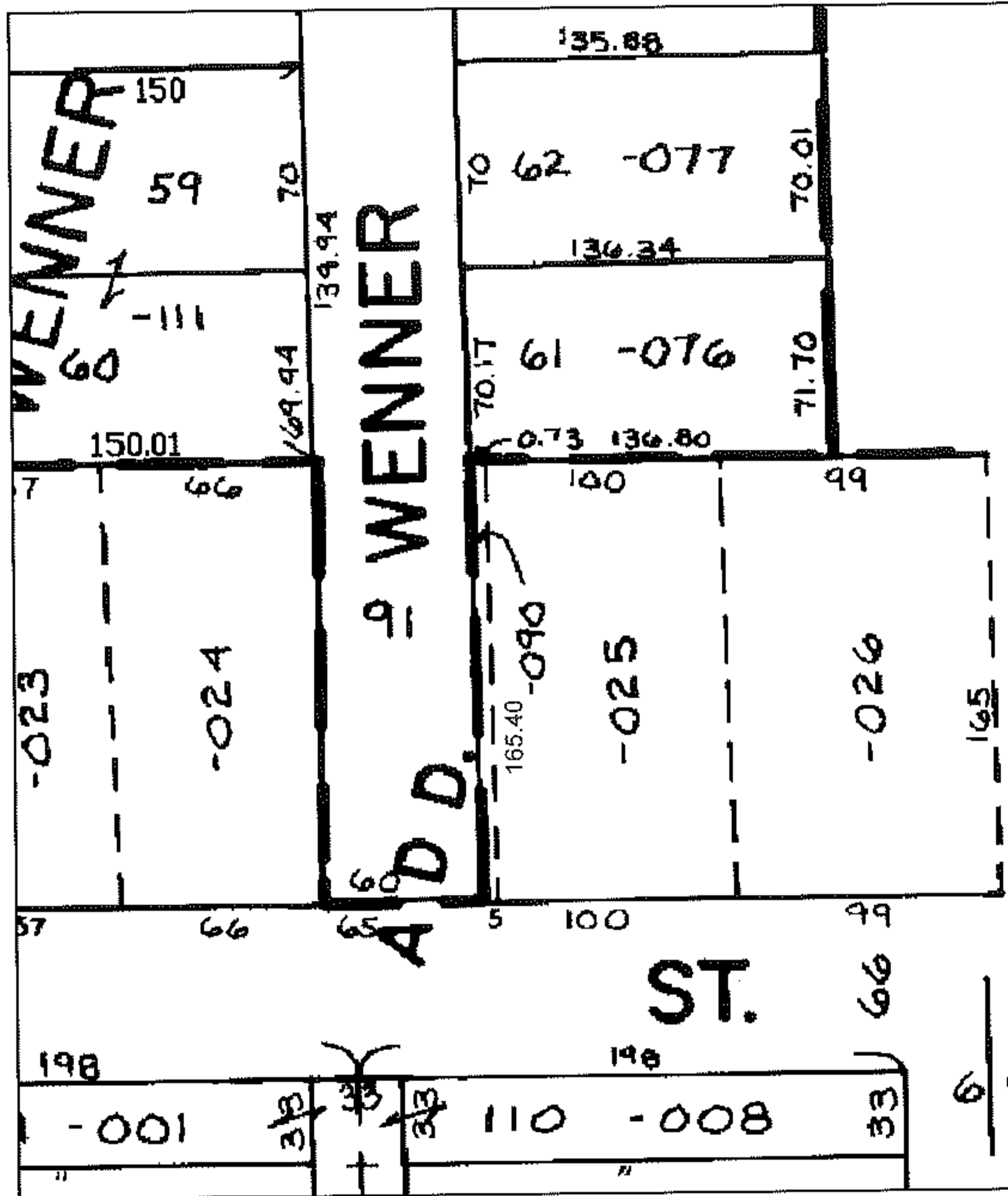
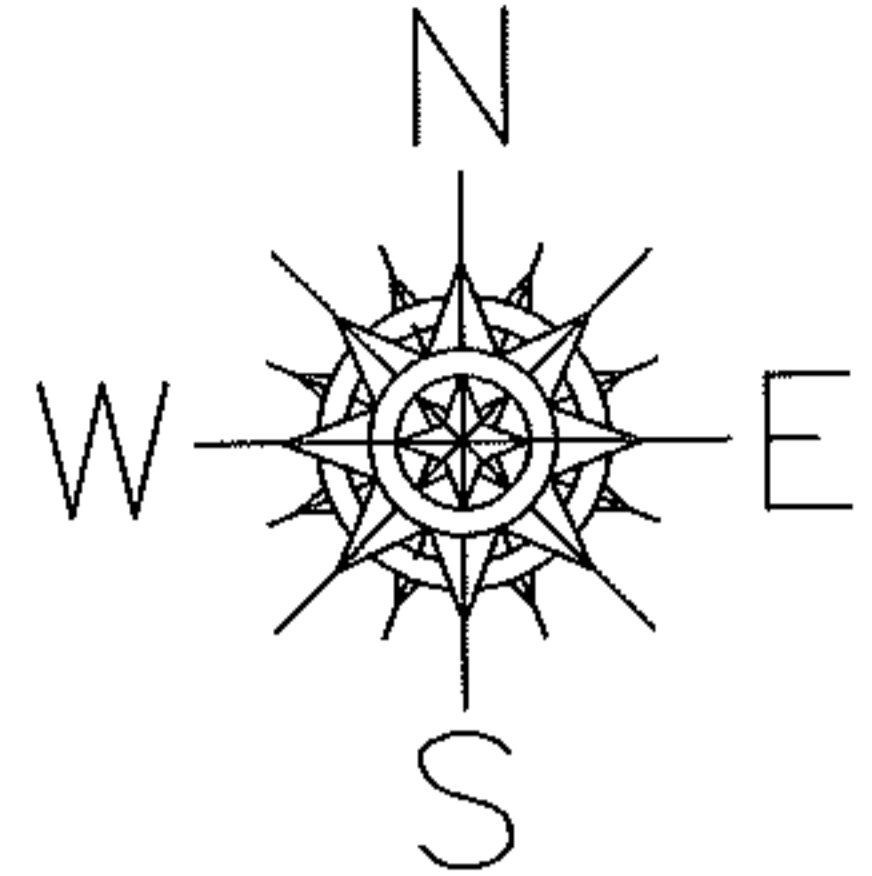
RASTER

PARENT PARCEL: 18-00-028-104-090
CHILD PARCEL: XX-XX-XXX-XXX-XXX
STARTING POINT: XXXXXX

09-01768-C

DEPTH CORRECTION

18-00-028-104-090
~~5 X 140.41~~
5 X 165.40
CORR. PER PV. 25 PG. 45



SPLITS/DEEDS PROCESSED
LORAIN COUNTY TAX MAP DEPARTMENT
226 MIDDLE AVE. ELYRIA, OHIO

SURVEYED BY: F. LAUNDON
CLOSURE: XXXXXX
MAP PAGE(S): 18-00-028-C
APPROVED BY: TJS DATE: 4/8/09
SCALE: 1"= 100 PRIOR INST.: 2003965131