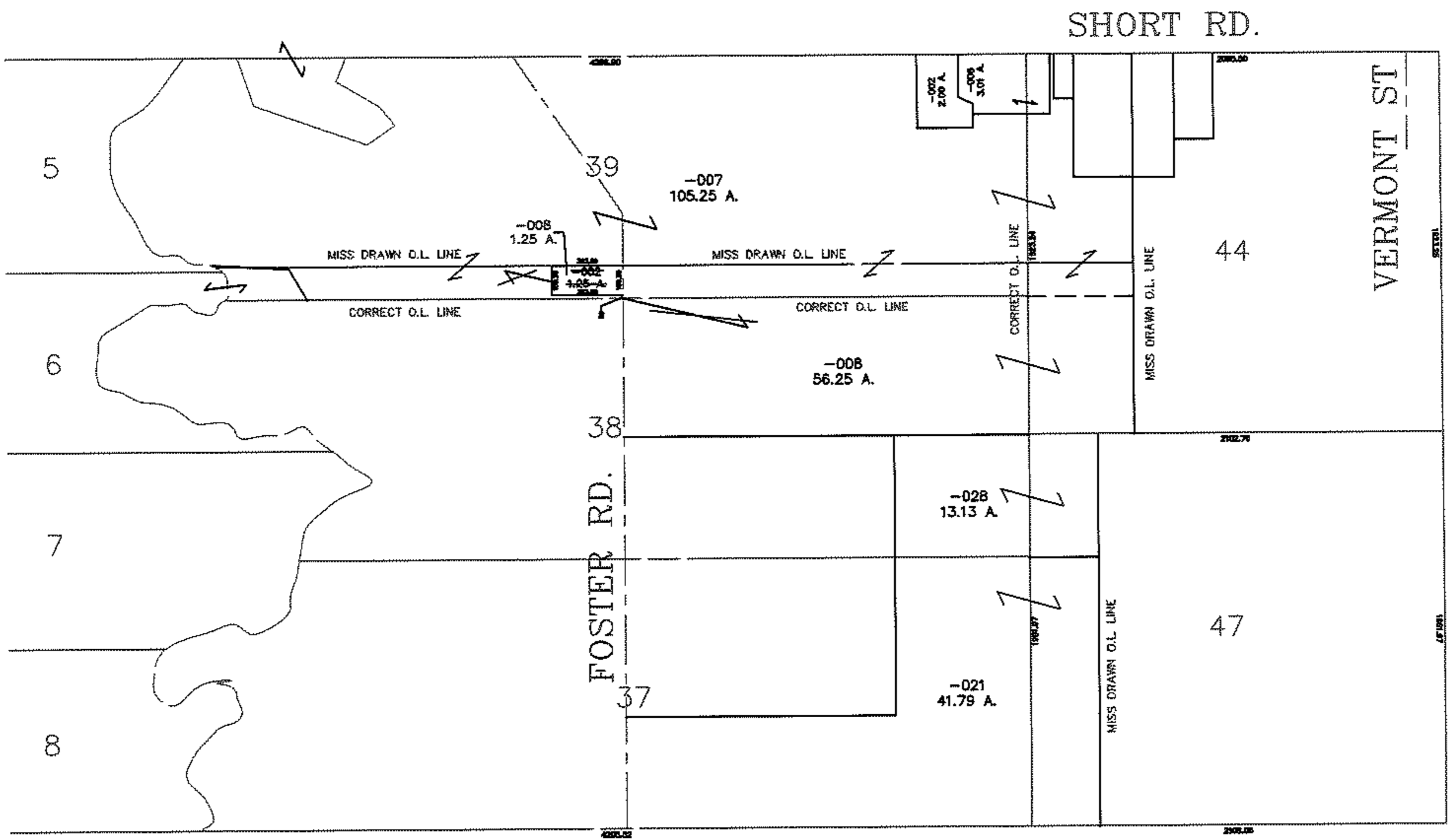


PARENT PARCEL: 19-05-038-000-002
 CHILD PARCEL: 19-05-039-000-008
 STARTING POINT: XXXXXX

NO. 09-01766-C

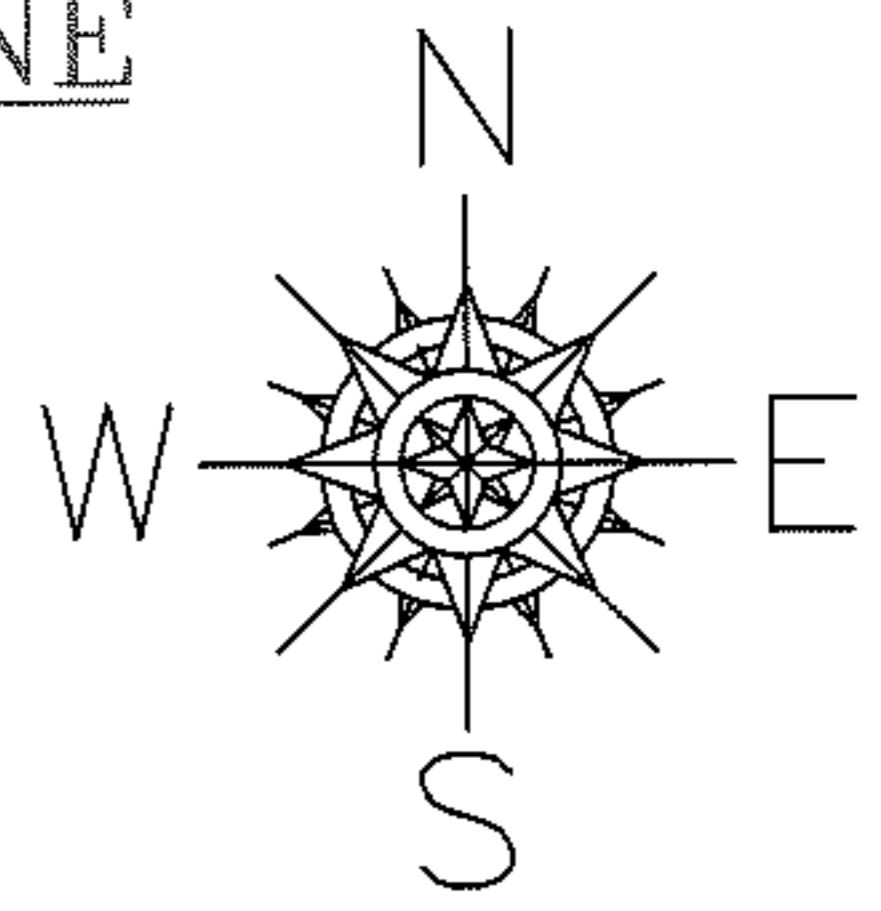
RASTER



PARCEL CORRECTION

~~19-05-038-000-002~~
 1.25 A.
 19-05-039-000-008
 1.25 A.

ORIGINAL LOT LINE
CORRECTION



SPLITS/DEEDS PROCESSED

LORAIN COUNTY TAX MAP DEPARTMENT
 226 MIDDLE AVE. ELYRIA, OHIO

SURVEYED BY: XXXXXXXXXXXX
 CLOSURE: XXXXXX

MAP PAGE(S): 19-C & D
 APPROVED BY: TJS DATE: 2/12/09
 SCALE: 1" = 1000 PRIOR INSTRUMENT: DV XXXX/XXX