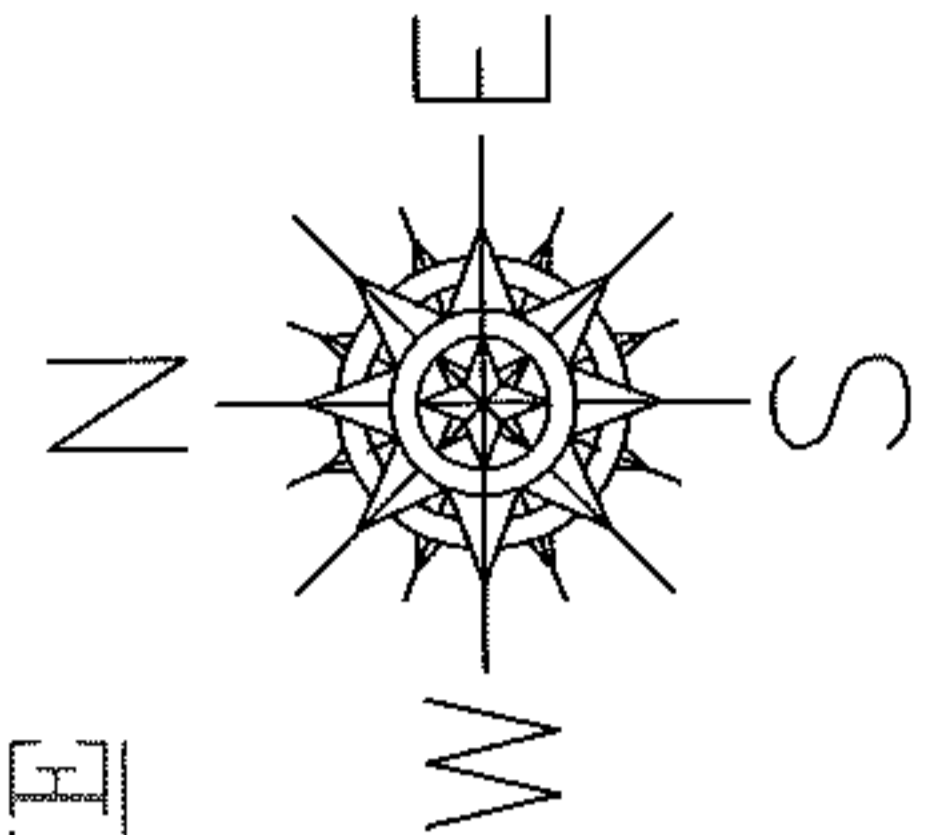
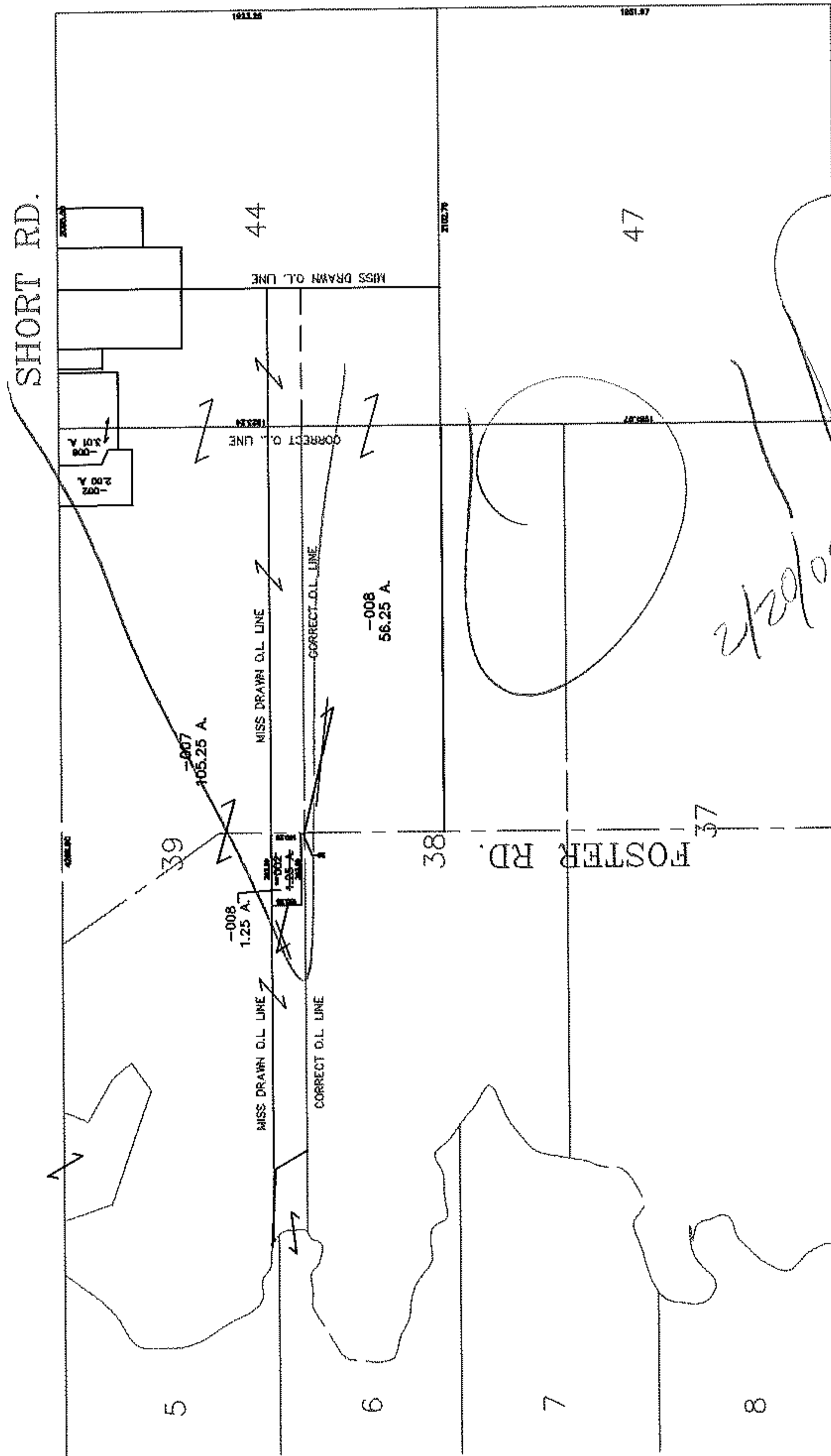


PARENT PARCEL: 19-05-038-000-002  
 CHILD PARCEL: 19-05-039-000-008  
 STARTING POINT: XXXXXX

NO. 09-01766-C



ORIGINAL LOT LINE

CORRECTION

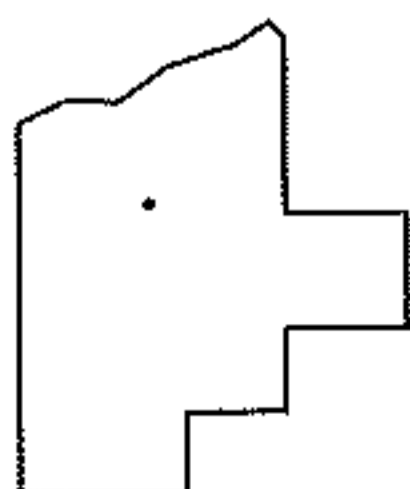
PARCEL CORRECTION

~~19-05-038-000-002~~

~~1.25 A.~~

19-05-038-000-008

1.25 A.



SPLITS/DEEDS PROCESSED

LORAIN COUNTY TAX MAP DEPARTMENT  
 226 MIDDLE AVE. ELYRIA, OHIO

SURVEYED BY: XXXXXXXXXXXX  
 CLOSURE: XXXXXX  
 MAP PAGE(S): 19-C & D  
 APPROVED BY: TJS DATE: 2/12/09  
 SCALE: 1" = 1000 PRIOR INSTRUMENT: DV XXXX/XXX