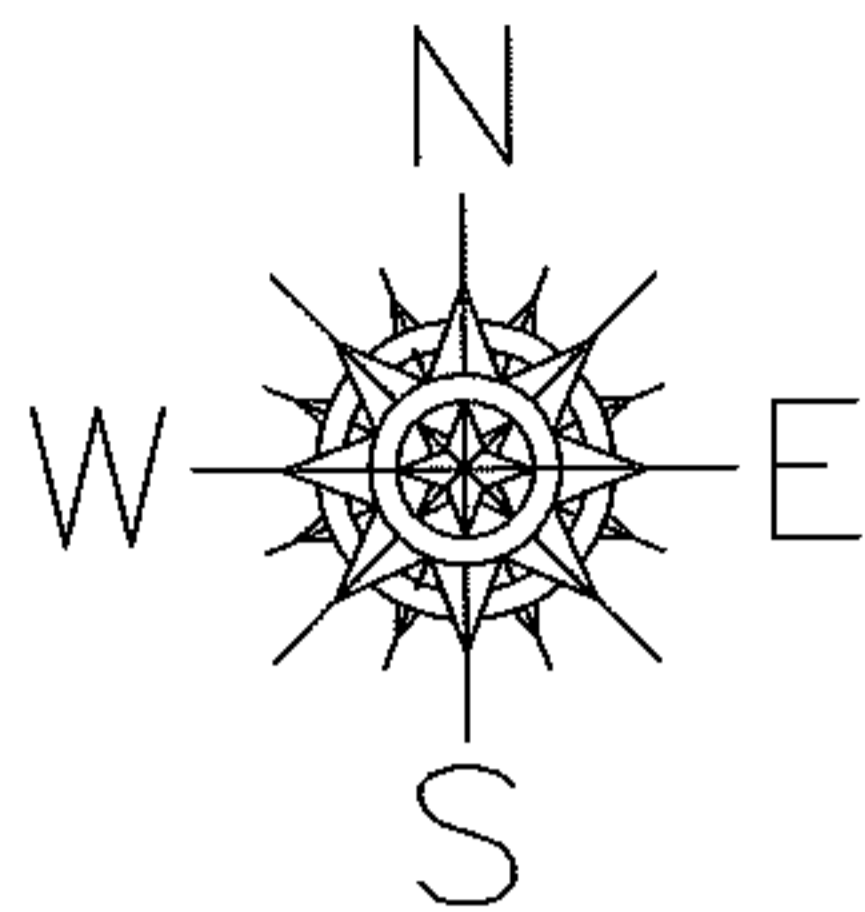
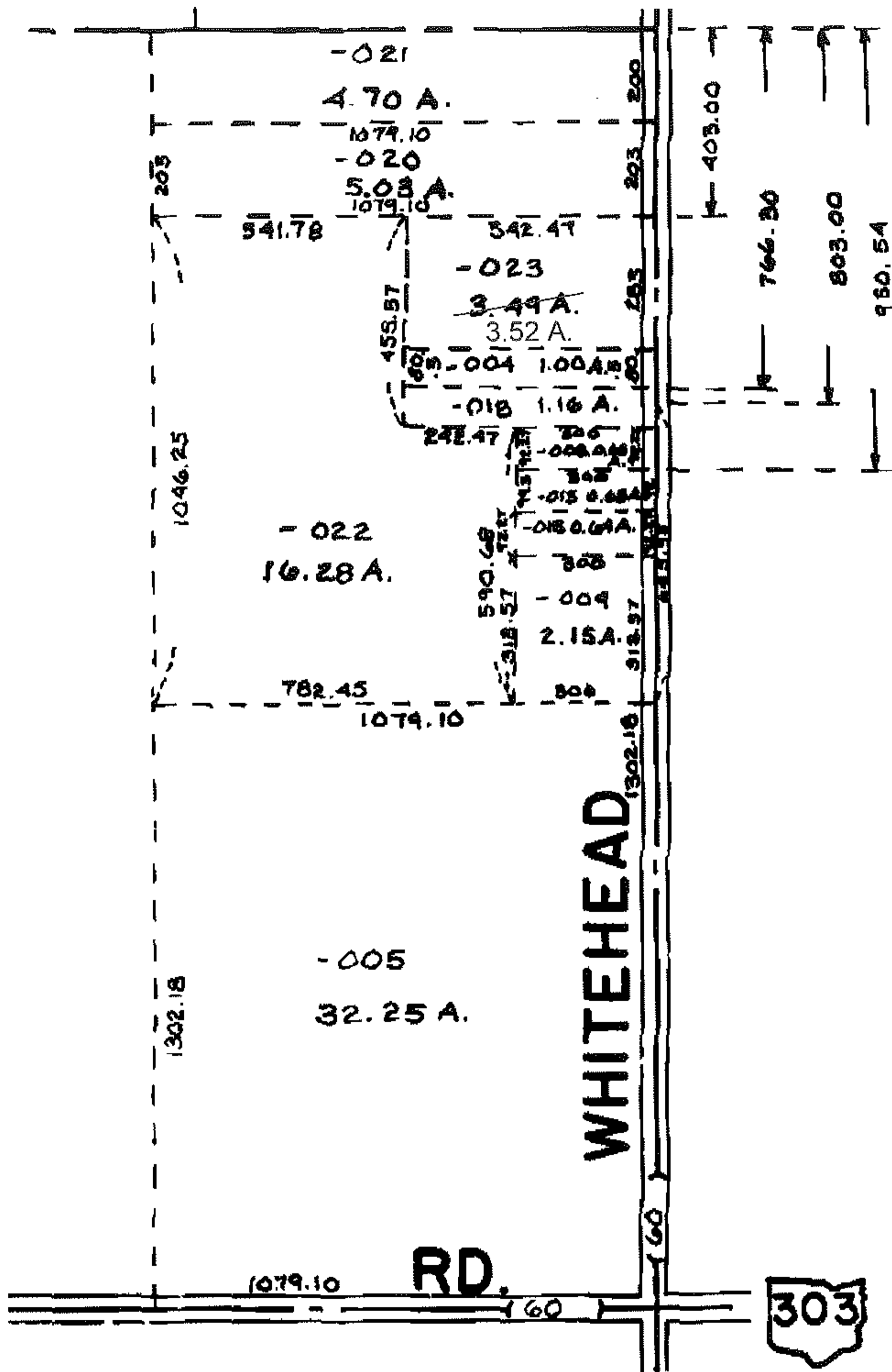


PARENT PARCEL: 15-00-043-000-023

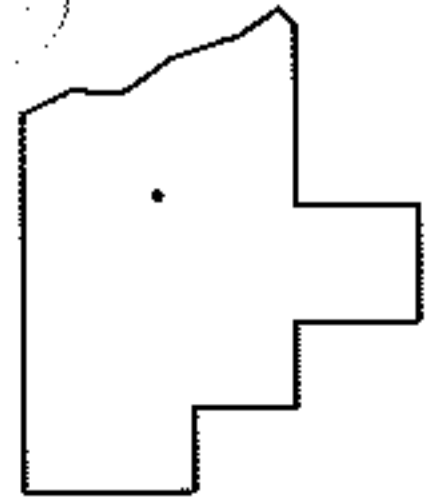
CHILD PARCEL: --SAME--

STARTING POINT: INT CL 303 AND WHITEHEAD RD

09-01763-C



AC.  
CORR.  
PER  
DEED



SPLITS/DEEDS PROCESSED

LORAIN COUNTY TAX MAP DEPARTMENT  
226 MIDDLE AVE. ELYRIA, OHIO

SURVEYED BY: N/A  
 CLOSURE: N/A  
 MAP PAGE(S): 15-A  
 APPROVED BY: DRH DATE: 2/18/2009  
 SCALE: NOT TO SCALE PRIOR INST.: \_\_\_\_\_