

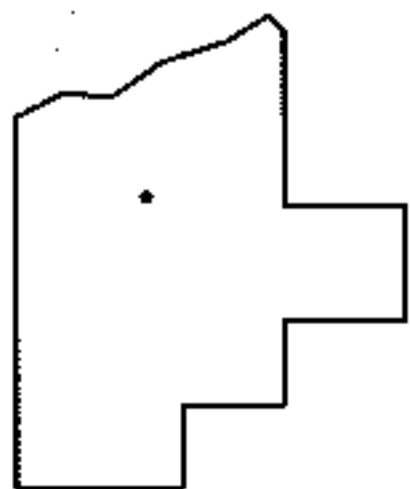
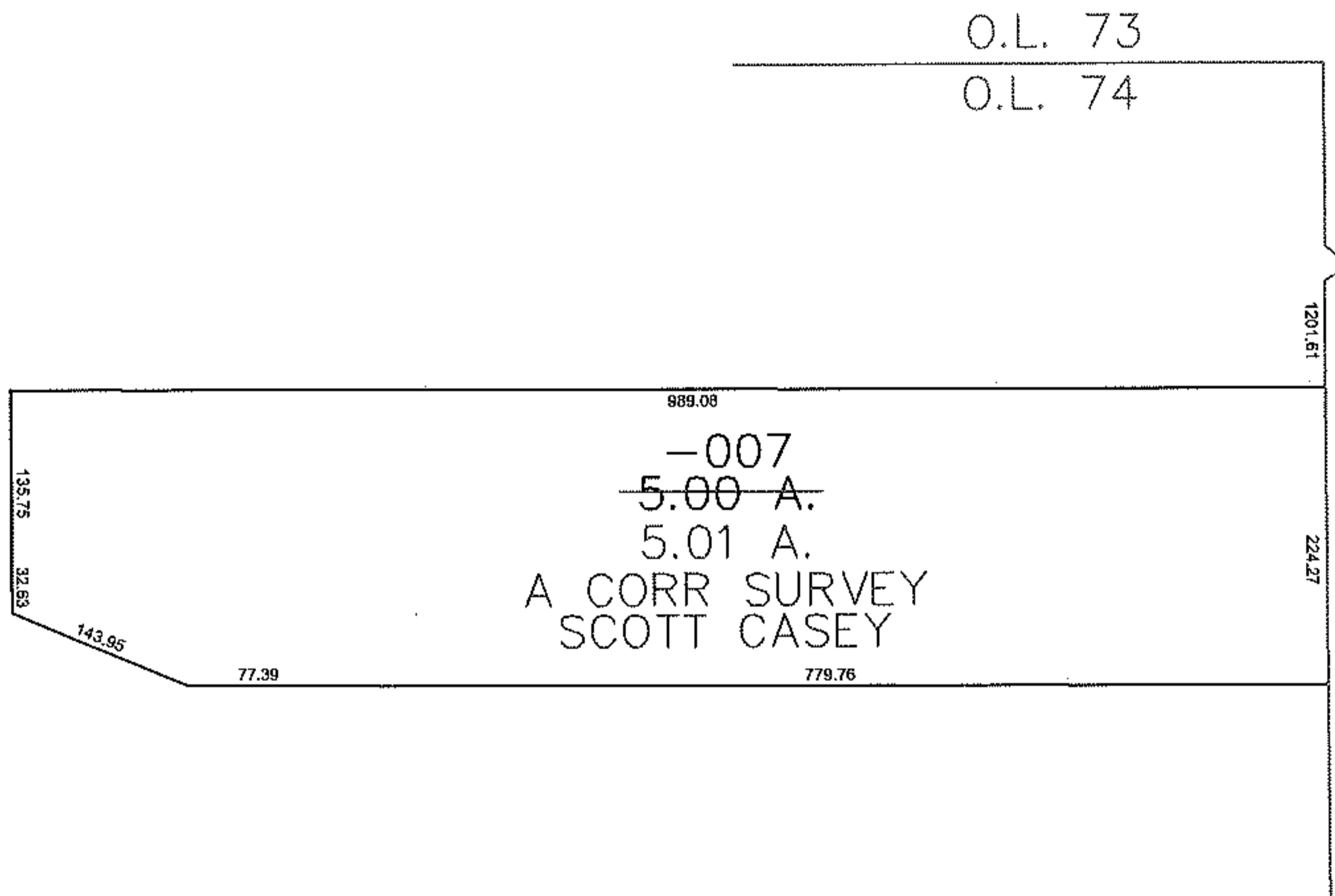
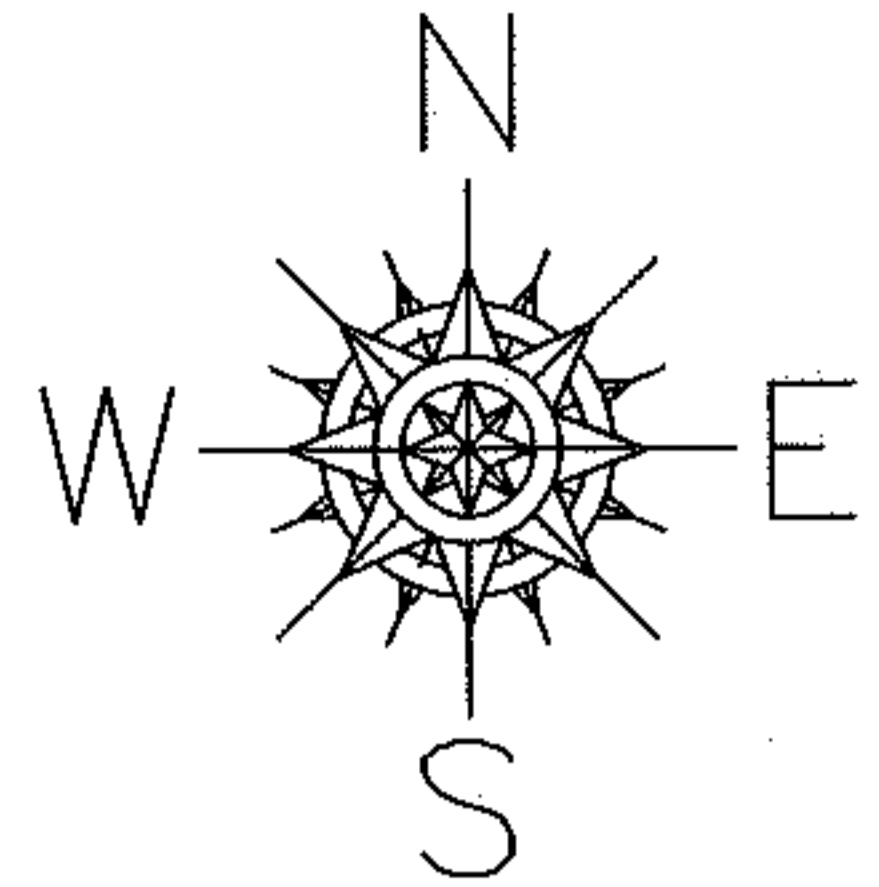
RASTER

PARENT PARCEL: 11-00-074-000-007

CHILD PARCEL: SAME

STARTING POINT: NORTH EAST CORNER OF O.L. 74

09-01762-D



SPLITS/DEEDS PROCESSED
 LORAIN COUNTY TAX MAP DEPARTMENT
 226 MIDDLE AVE. ELYRIA, OHIO

SURVEYED BY: SCOTT CASEY
 CLOSURE: 0.00 : 10.000
 MAP PAGE(S): 11-B
 APPROVED BY: JAH DATE: 2-5-09
 SCALE: 1" = 200 PRIOR INSTRUMENT: 20020810815