

RASTER

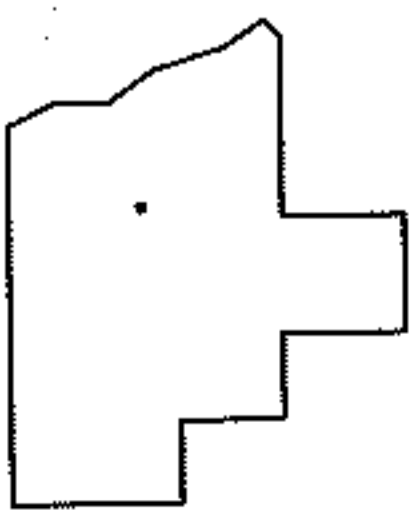
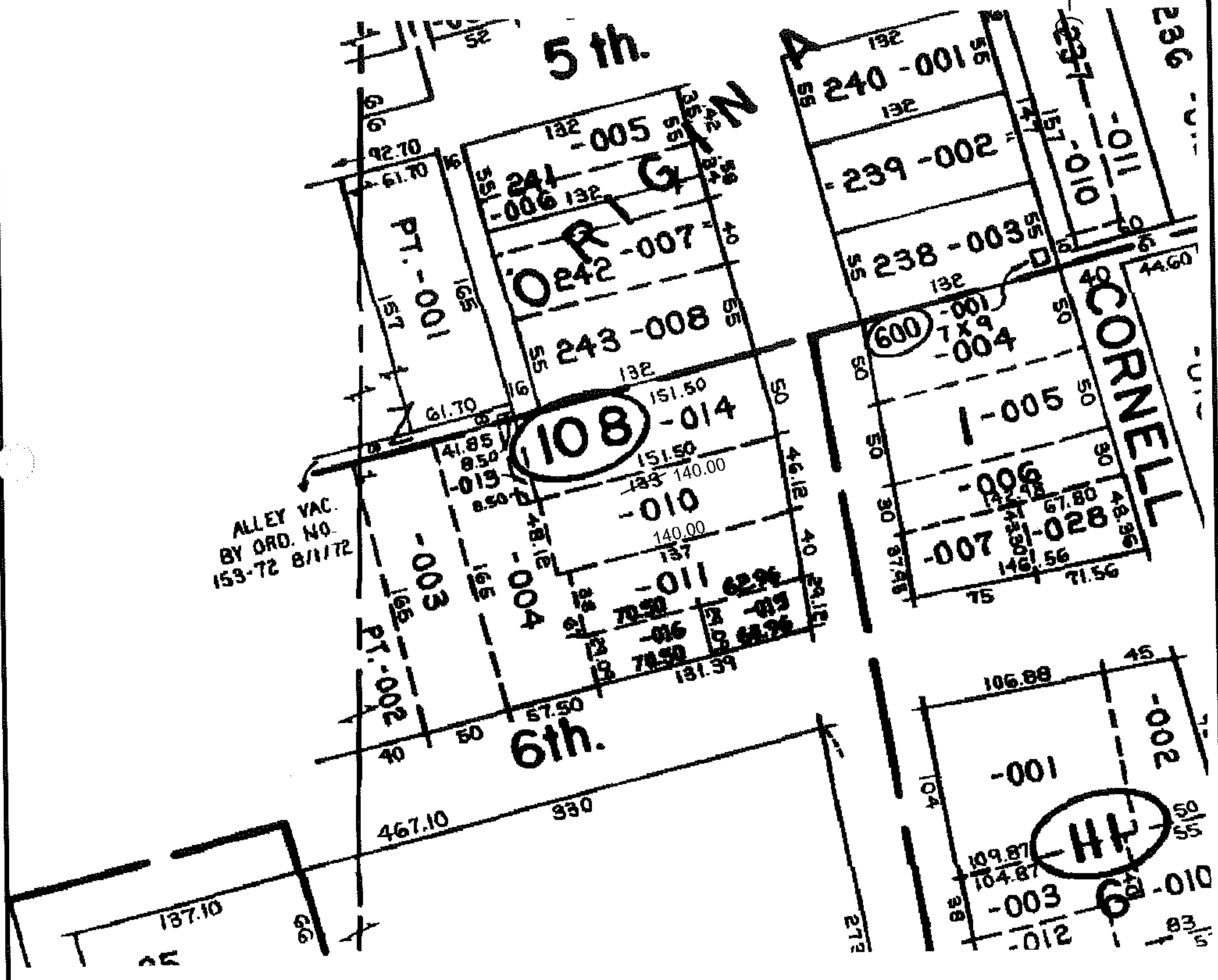
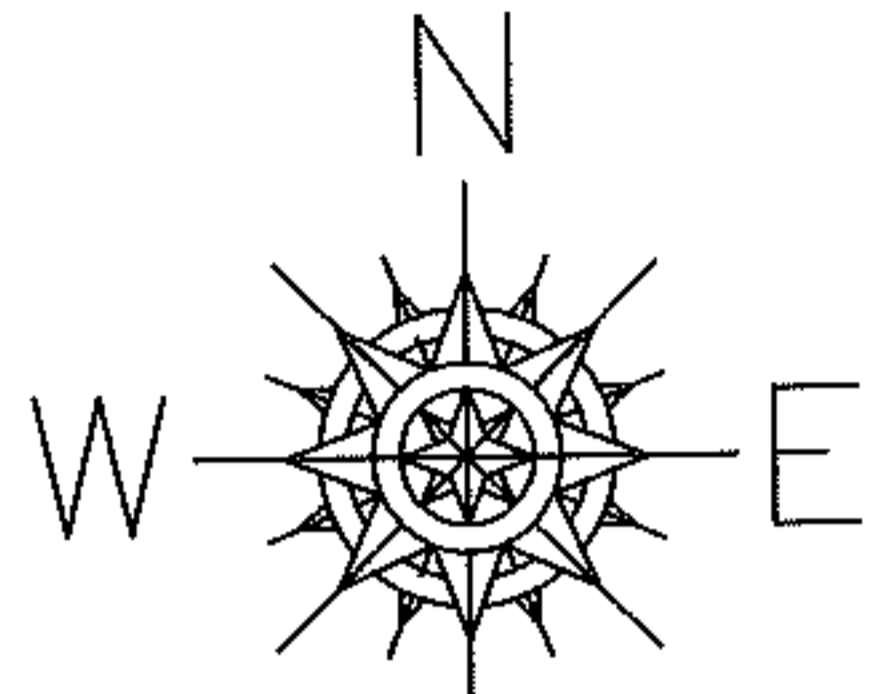
PARENT PARCEL: 02-01-005-108-010

09-01753-C

CHILD PARCEL: --SAME--

STARTING POINT: WESTERL LINE OF WASHINGTON AVE AND 6TH STREET

# DEPTH CORR. PER DEED



## SPLITS/DEEDS PROCESSED

LORAIN COUNTY TAX MAP DEPARTMENT  
226 MIDDLE AVE. ELYRIA, OHIO

SURVEYED BY: N/A

CLOSURE: N/A

MAP PAGE(S): 02-01-004-B

APPROVED BY: DRH DATE: 2/2/2009

SCALE: NOT TO SCALE PRIOR INST.: 20090281067