

RASTER

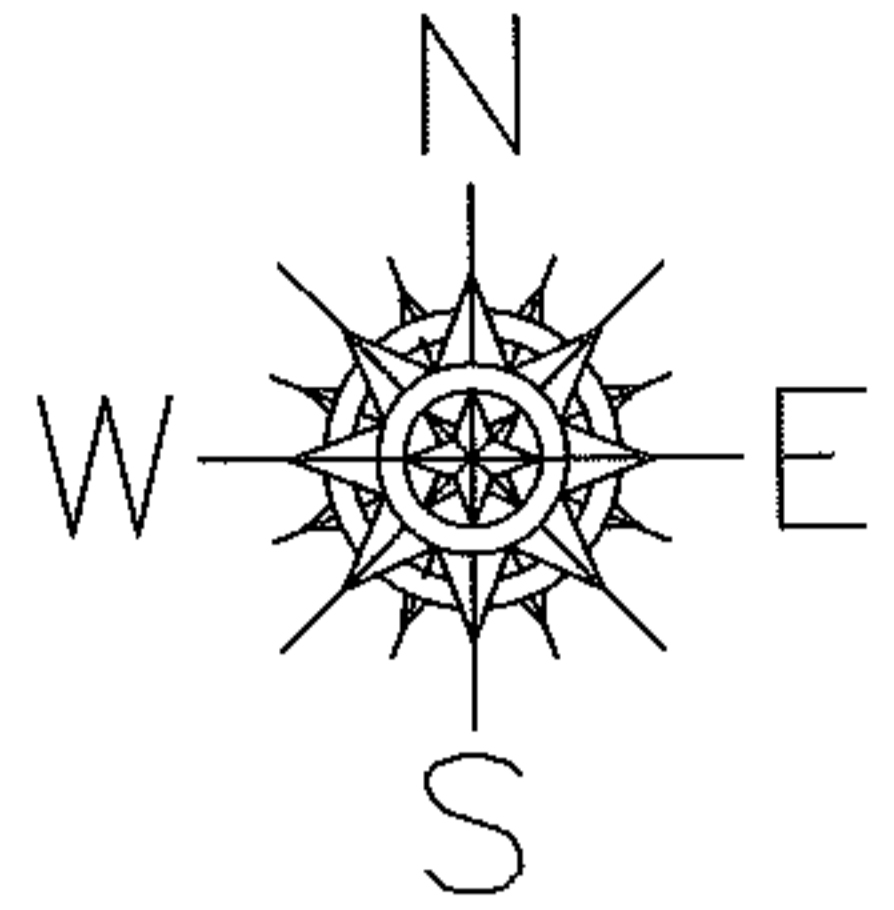
PARENT PARCEL: 06-26-026-000-009

CHILD PARCEL: --SAME--

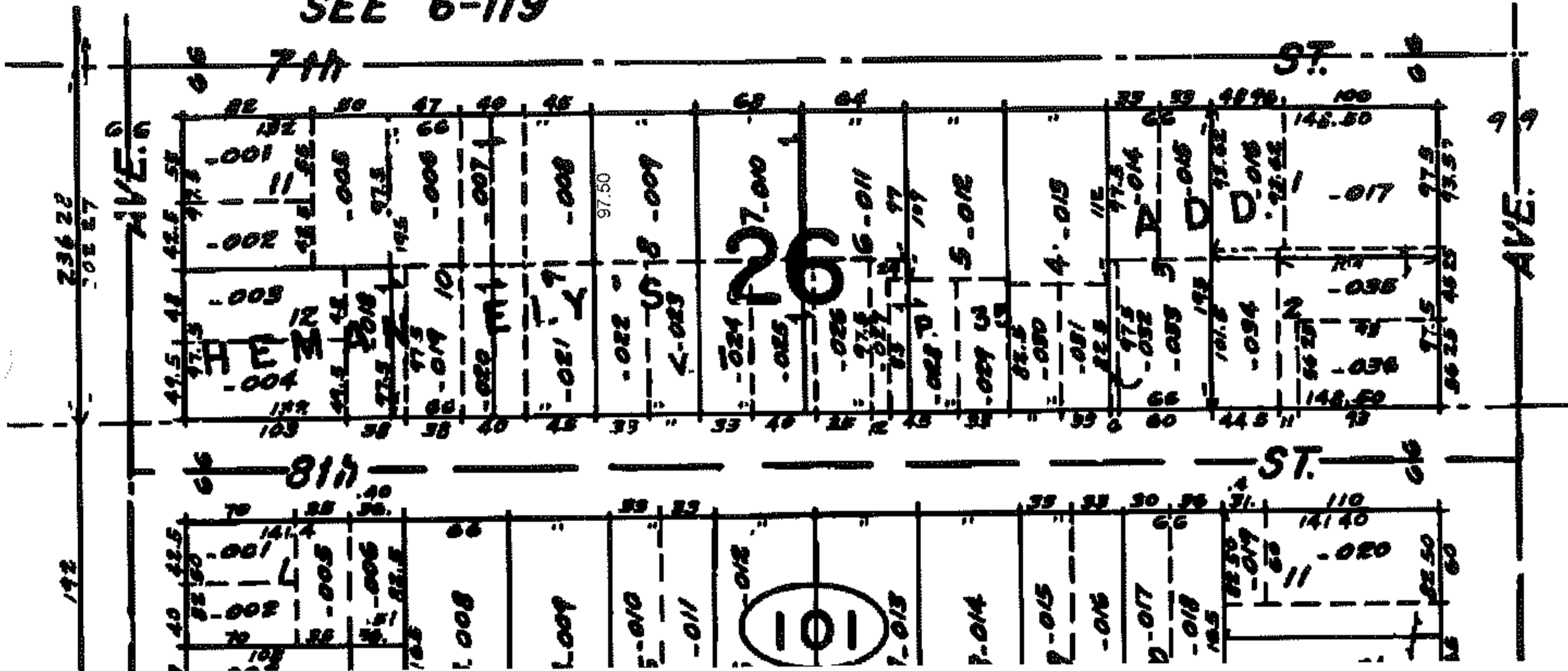
STARTING POINT: S/L 8 IN HEMAN ELY'S ADDITION

09-01752-C

DEPTH CORR PER DEED



SEE 6-119



SPLITS/DEEDS PROCESSED

LORAIN COUNTY TAX MAP DEPARTMENT
226 MIDDLE AVE. ELYRIA, OHIO

SURVEYED BY: N/A

CLOSURE: N/A

MAP PAGE(S): 6-137

APPROVED BY: DRH DATE: 2/2/2009

SCALE: NOT TO SCALE PRIOR INST.: 20090280808