

RASTER

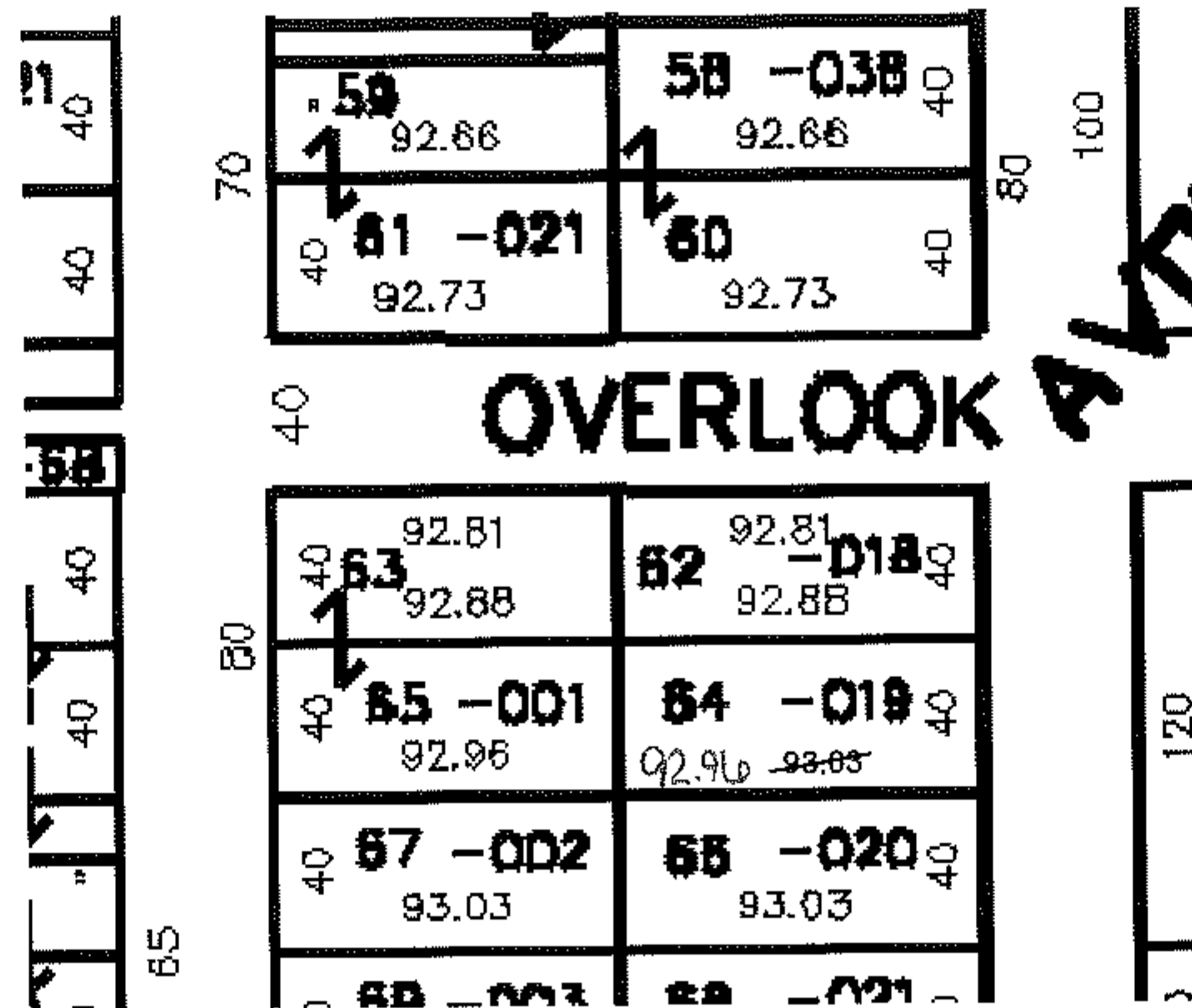
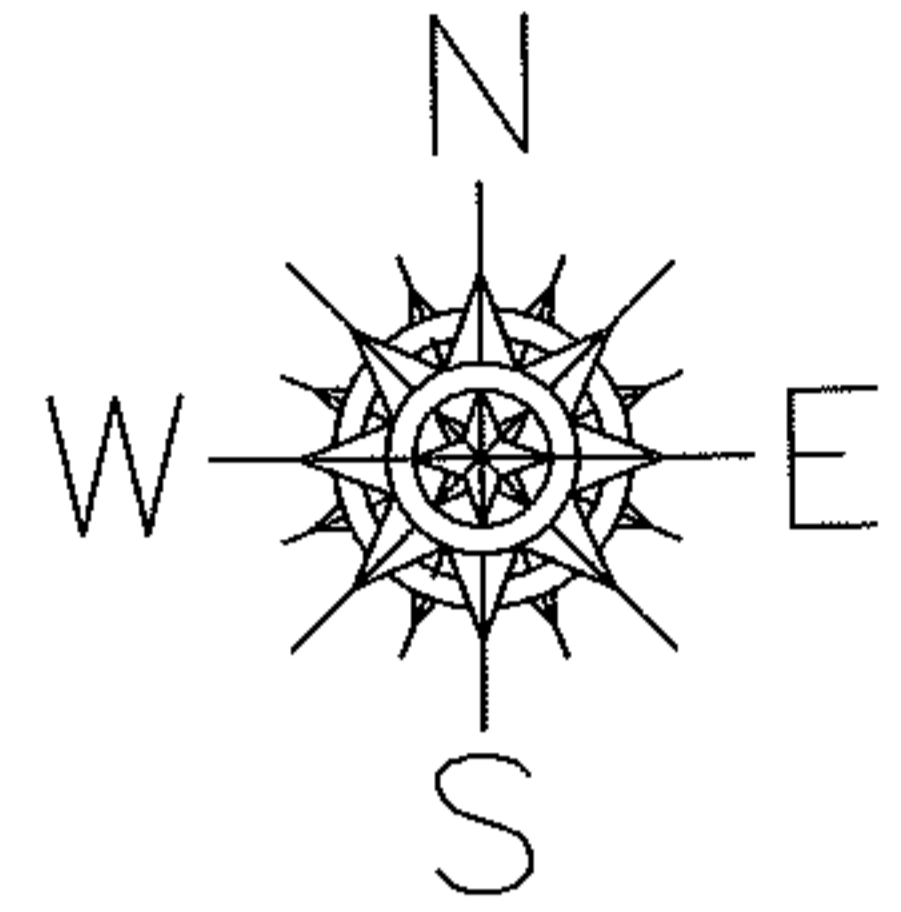
PARENT PARCEL: 04-00-030-130-019

CHILD PARCEL: --SAME--

STARTING POINT: SL 64 V.11 P. 28

09-01751-C

DEPTH CORR PER PLAT



SPLITS/DEEDS PROCESSED

LORAIN COUNTY TAX MAP DEPARTMENT
226 MIDDLE AVE. ELYRIA, OHIO

SURVEYED BY: N/A

CLOSURE: N/A

MAP PAGE(S): 04-00-030-A

APPROVED BY: DRH DATE: 1/30/2009

SCALE: NOT TO SCALE PRIOR INSTRUMENT: