

RASTER

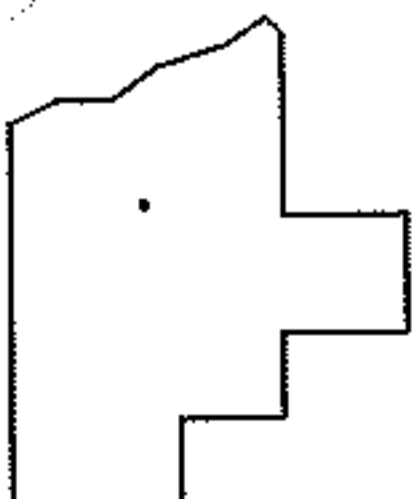
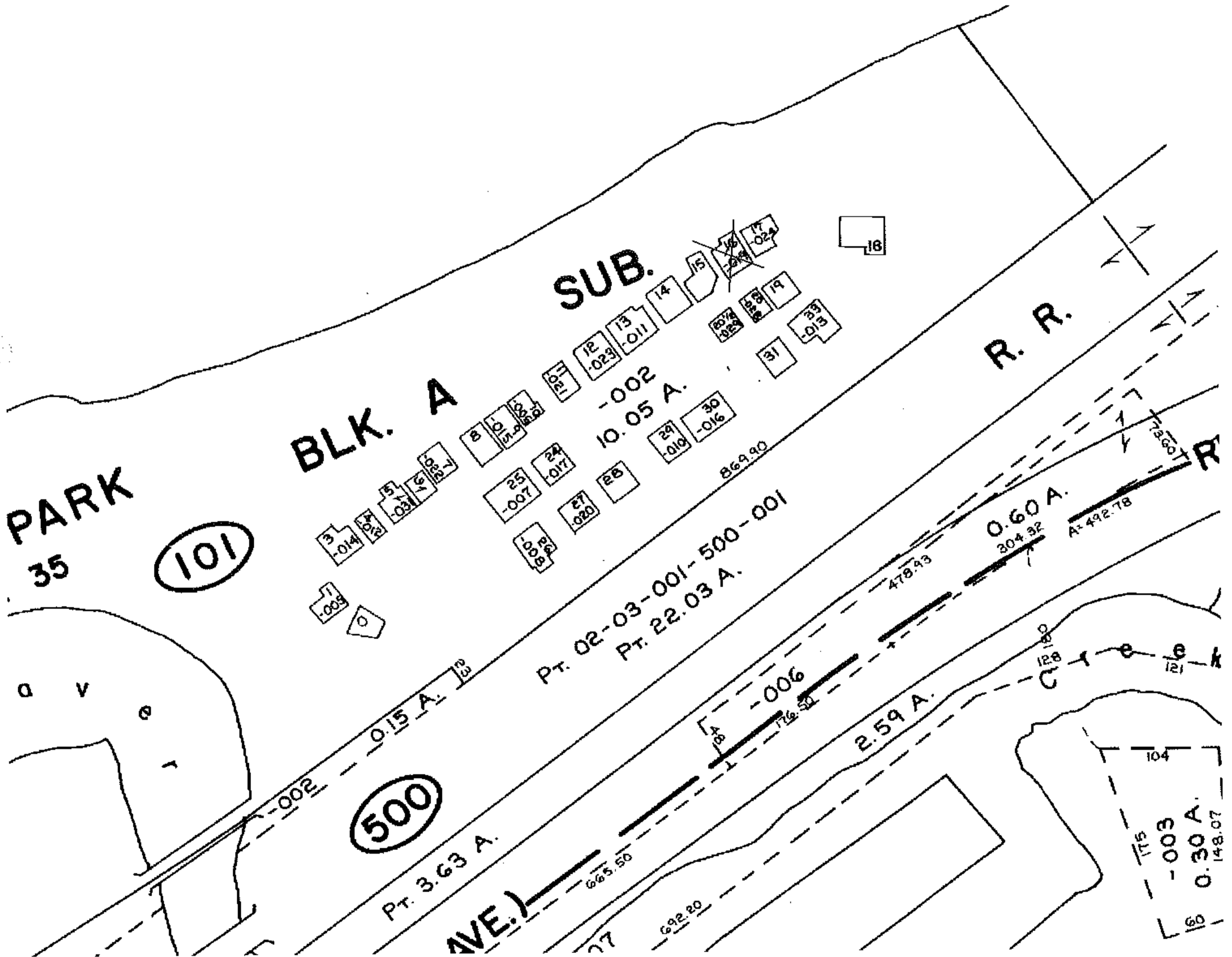
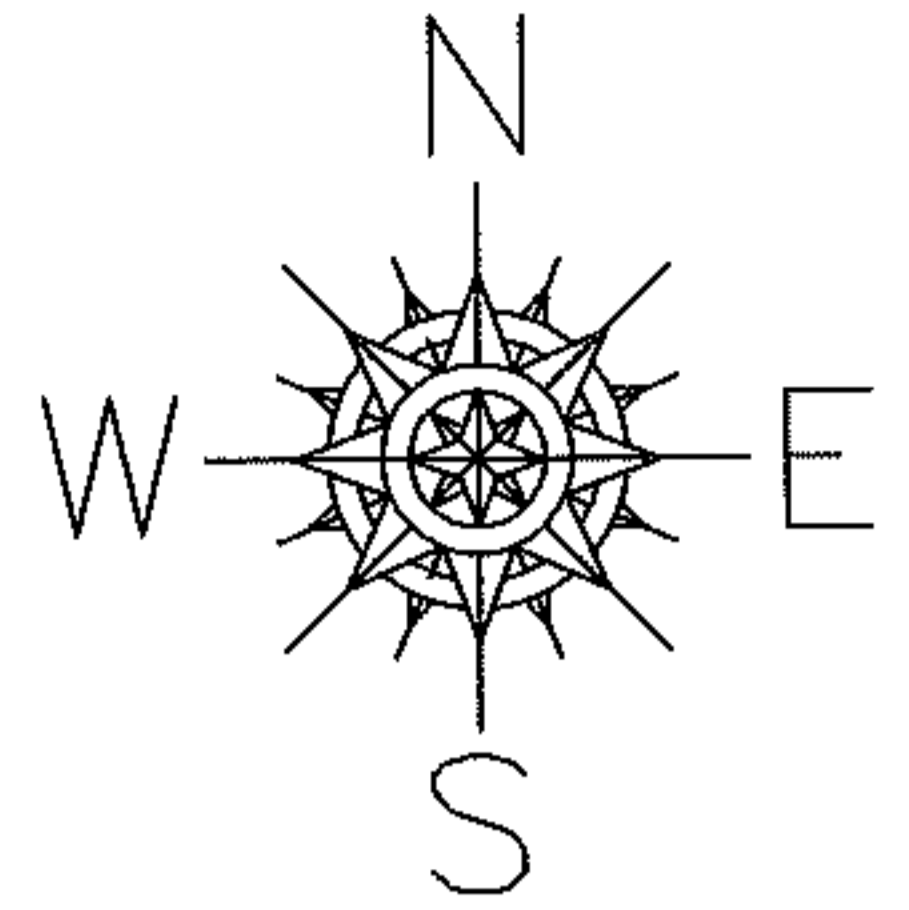
PARENT PARCEL: 02-03-002-101-019

09-01743-X

CHILD PARCEL: --NONE--

STARTING POINT: BUILDING ON LEASED LAND - BEAVER PARK SUB BLOCK A

DROP FROM DUP
BUILDING WAS RAZED



SPLITS/DEEDS PROCESSED

LORAIN COUNTY TAX MAP DEPARTMENT
226 MIDDLE AVE. ELYRIA, OHIO

SURVEYED BY: N/A

CLOSURE: N/A

MAP PAGE(S): 02-03-002-A

APPROVED BY: DRH DATE: 2/17/2009

SCALE: NOT TO SCALE PRIOR INST.: 20010764332