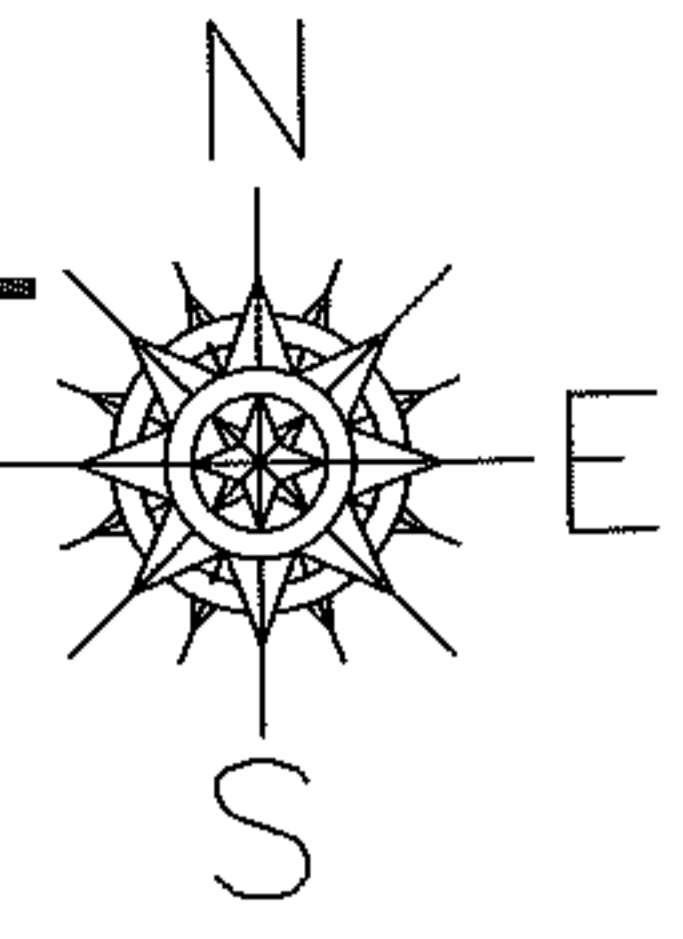
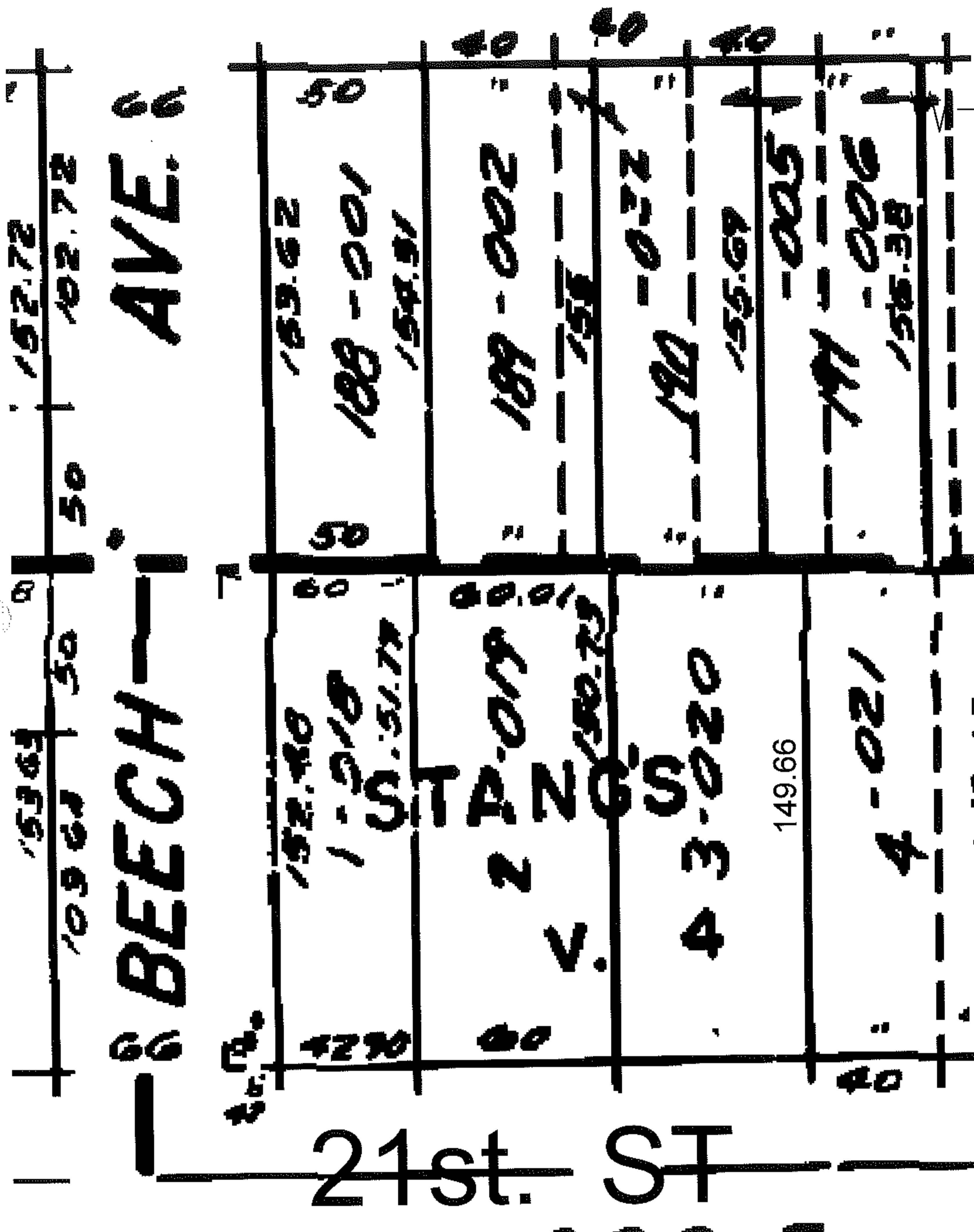


PARENT PARCEL: 02-01-006-147-020

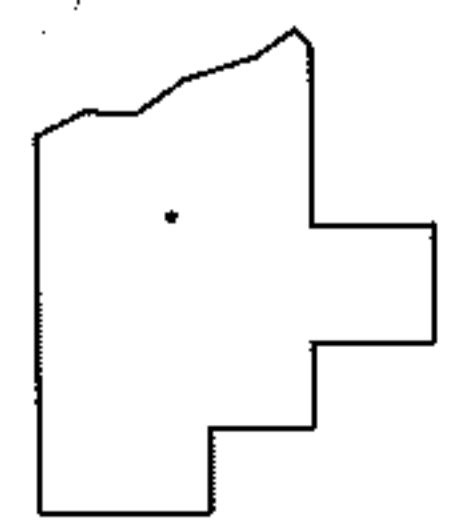
CHILD PARCEL: --SAME--

STARTING POINT: INT CL BEECH AVE AND 21ST ST

08-01739-C



DEPTH  
CORR  
PER MAP  
& DEED  
NO MAP  
CORR



SPLITS/DEEDS PROCESSED

LORAIN COUNTY TAX MAP DEPARTMENT  
226 MIDDLE AVE. ELYRIA, OHIO

SURVEYED BY: N/A  
 CLOSURE: N/A  
 MAP PAGE(S): 02-01-006-D  
 APPROVED BY: DRH DATE: 2/13/2009  
 SCALE: NOT TO SCALE PRIOR INST.: 20010789623