

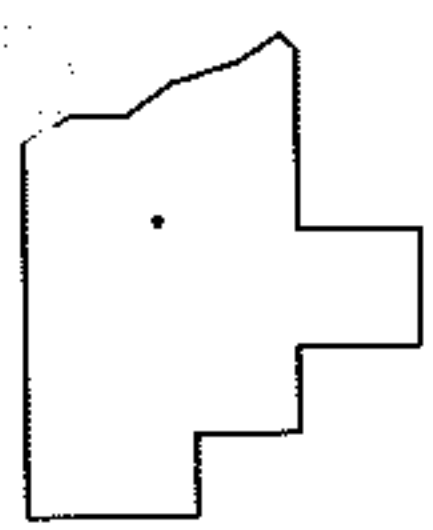
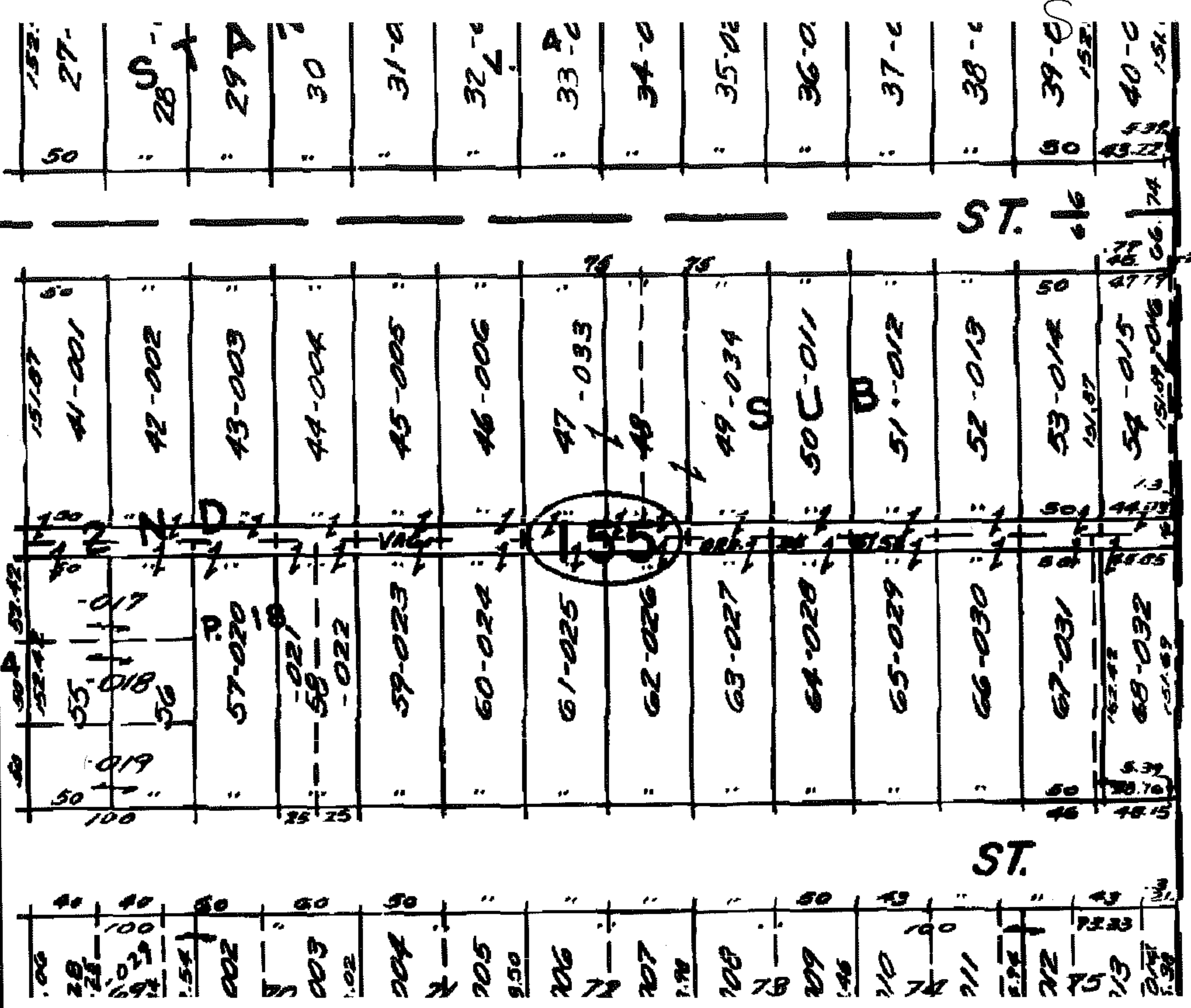
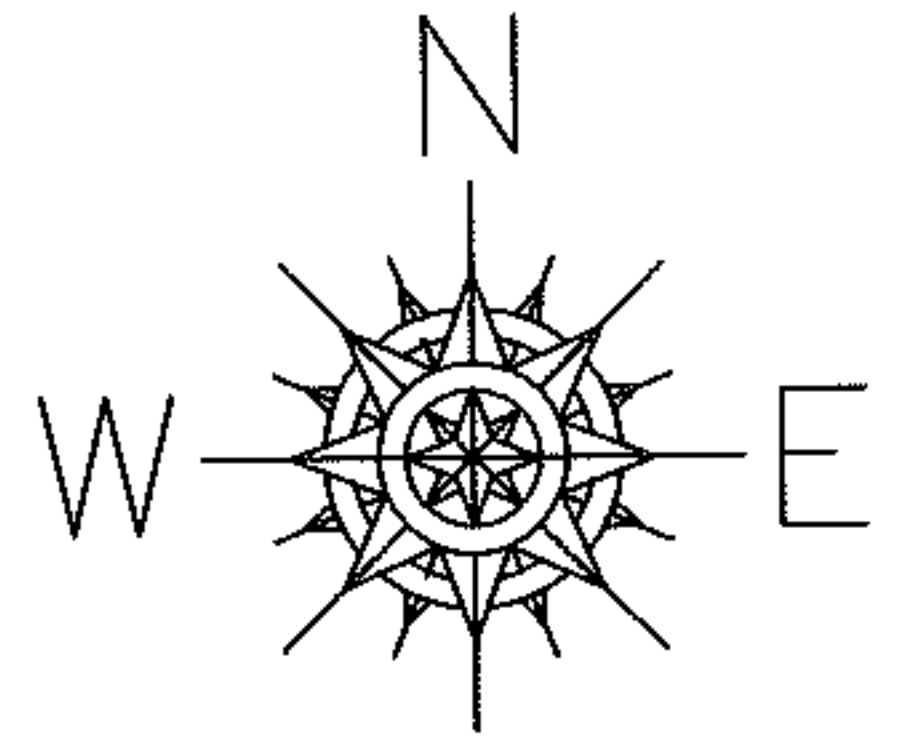
PARENT PARCEL: 02-01-006-155-020

08-01729-C

CHILD PARCEL: --SAME--

STARTING POINT: S/L 57 IN STANG'S 2ND SUB

DEPTH CORR
NO MAP CORR



SPLITS/DEEDS PROCESSED

LORAIN COUNTY TAX MAP DEPARTMENT
226 MIDDLE AVE. ELYRIA, OHIO

SURVEYED BY: N/A
 CLOSURE: N/A
 MAP PAGE(S): 02-01-006-F
 APPROVED BY: DRH DATE: 12/8/2008
 SCALE: NOT TO SCALE PRIOR INST.: