

RASTER

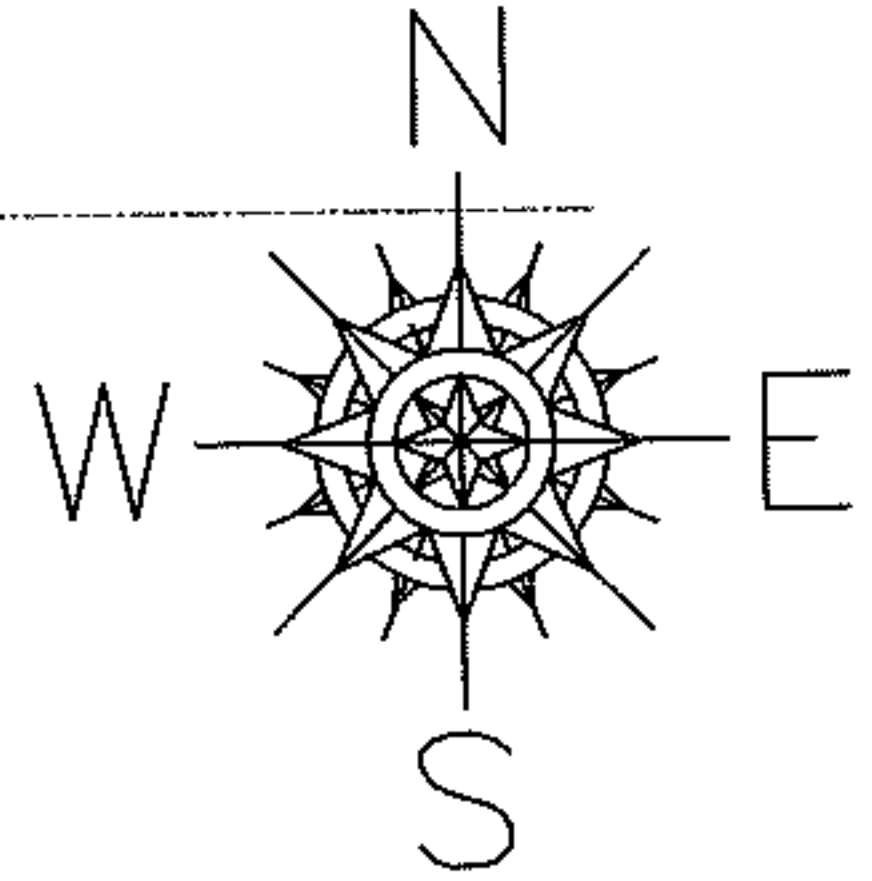
PARENT PARCEL: 18-00-044-000-065

08-01723-C

CHILD PARCEL: --SAME--

STARTING POINT: INT CL PECK - WADSWORTH RD AND N.E. CORNER OF O.L.44

PECK - WADSWORTH RD



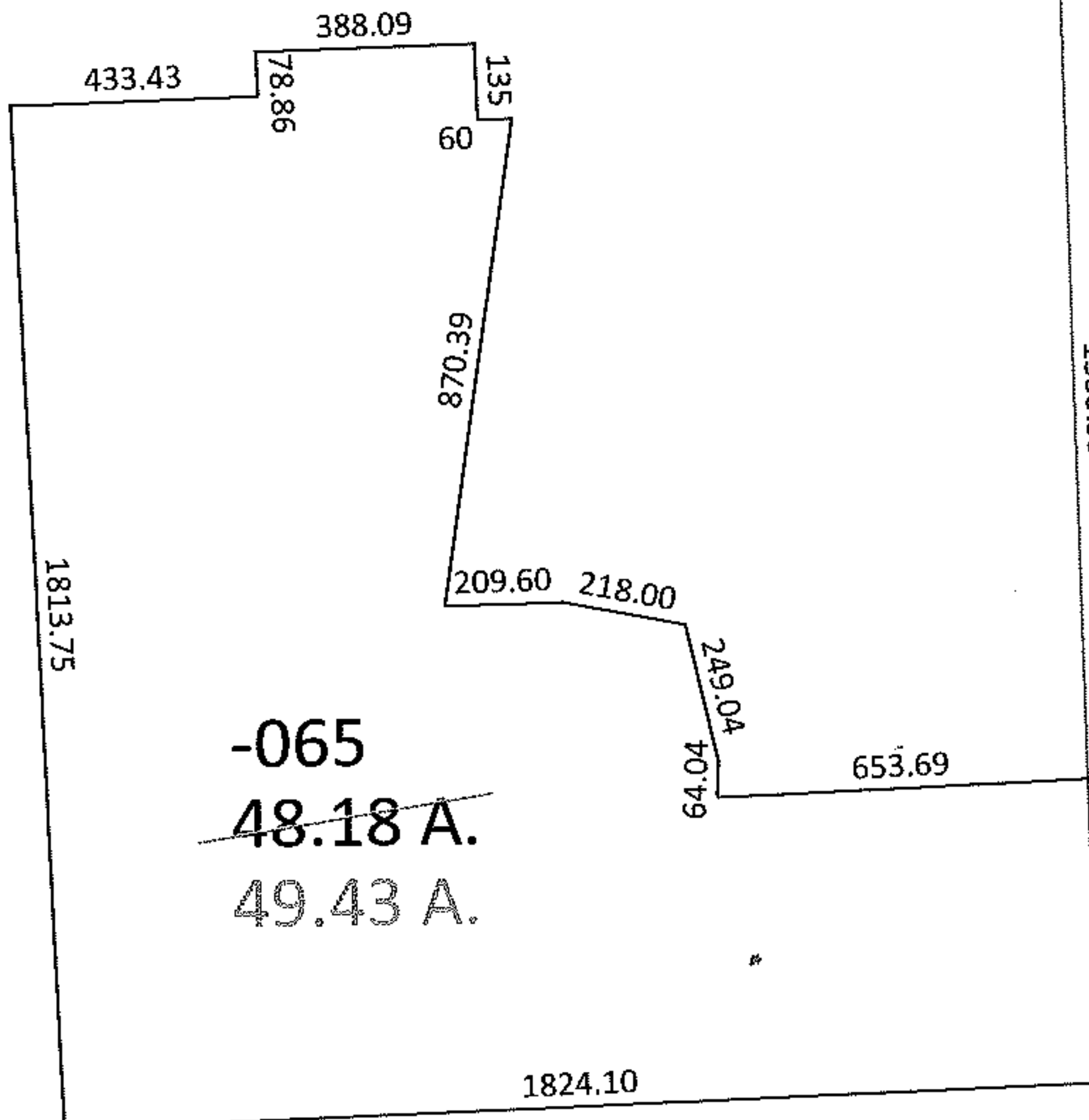
AC. CORR.
PER SURVEY
T. SNEZEK

O.L. 44

1941.04

1335.99

537.51



SPLITS/DEEDS PROCESSED

LORAIN COUNTY TAX MAP DEPARTMENT
226 MIDDLE AVE. ELYRIA, OHIO

SURVEYED BY: THOMAS M. SNEZEK

CLOSURE: 1:10,000

MAP PAGE(S): 18-00-027-B

APPROVED BY: DRH DATE: 12/1/2008

SCALE: 1" = 500 PRIOR INSTRUMENT: 200200806871