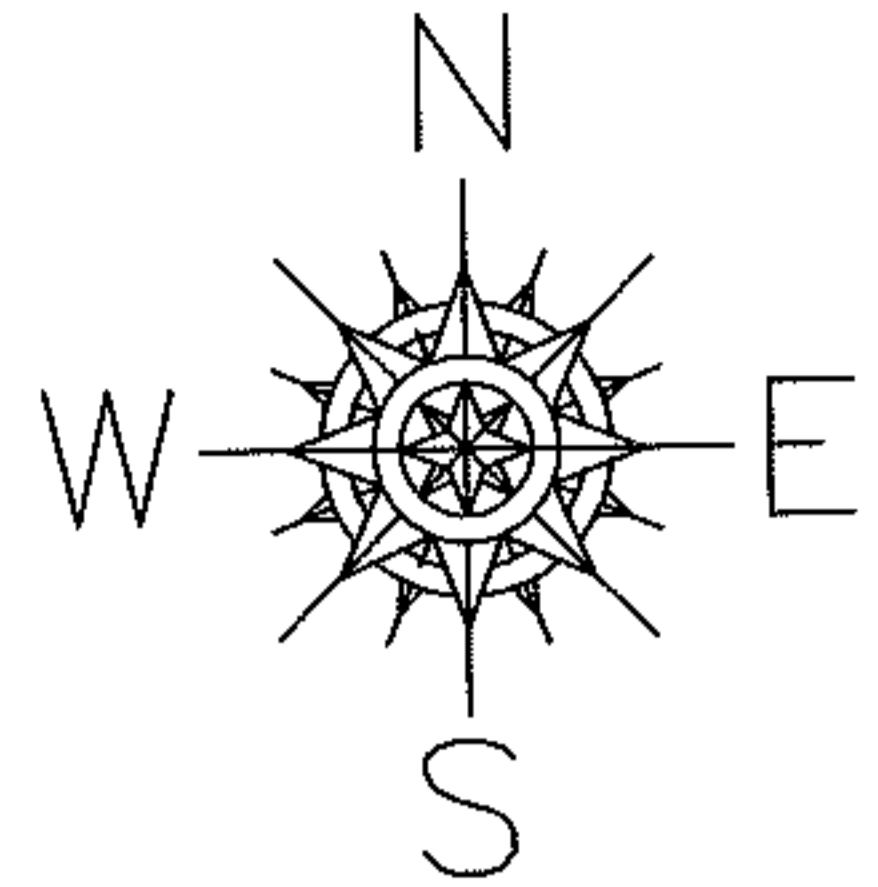


RASTER

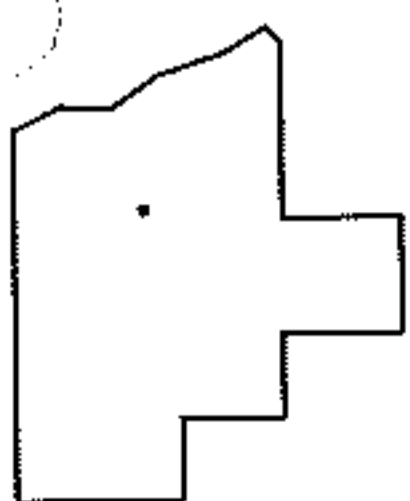
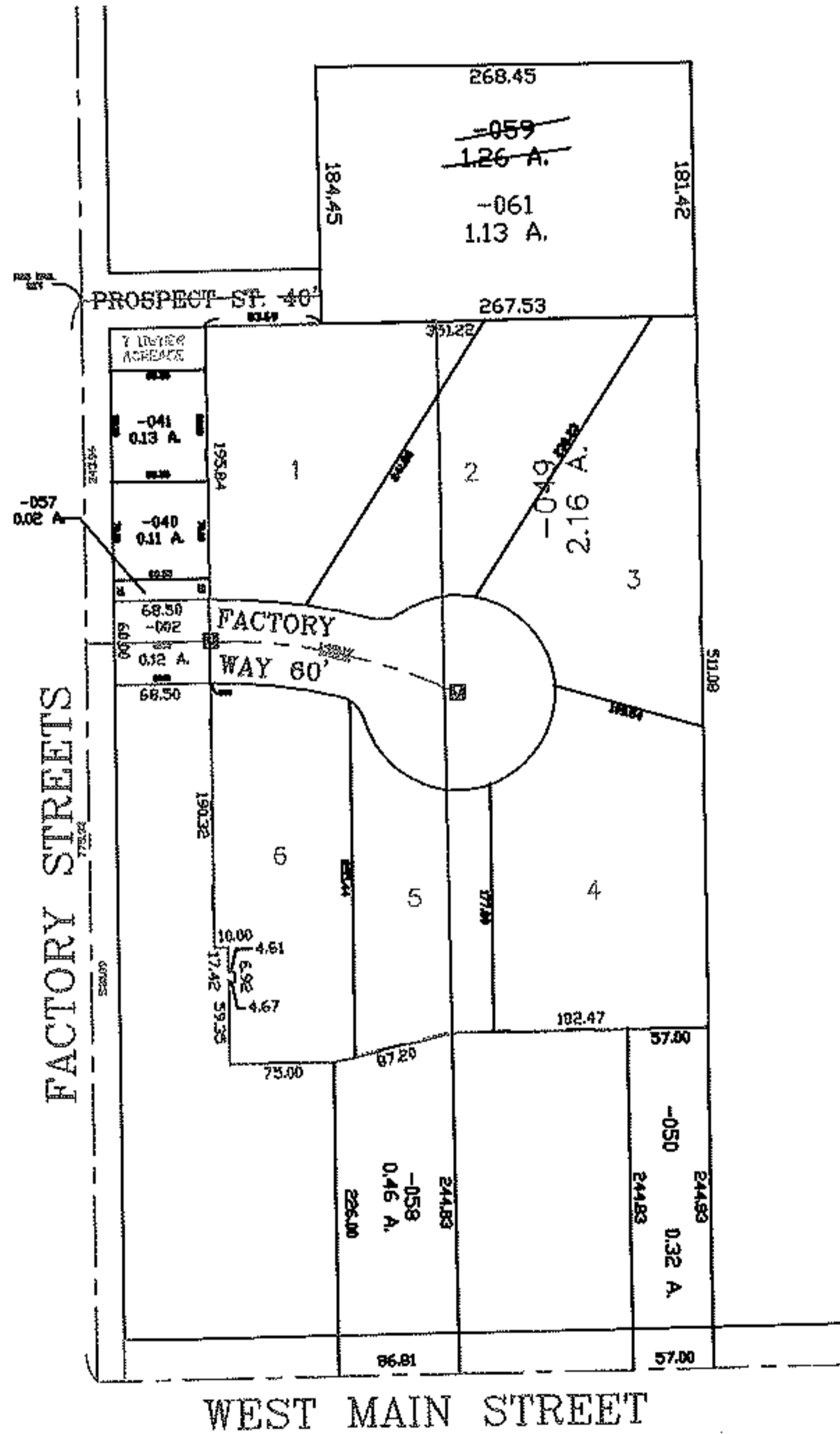
PARENT PARCEL: 15-00-045-105-059
CHILD PARCEL: DROP FROM DUPLICATE
STARTING POINT: XXXXX

08-01721-C

DROP FROM DUPLICATE
PARCEL # ASSIGNED
TWICE AND HAS WRONG ACREAGE



~~-059~~
~~1.26 A.~~



SPLITS/DEEDS PROCESSED
LORAIN COUNTY TAX MAP DEPARTMENT
226 MIDDLE AVE. ELYRIA, OHIO

SURVEYED BY: P. A. ROSEBECK
CLOSURE: 0.01 : 10,000
MAP PAGE(S): 15-00-045-B
APPROVED BY: DRH DATE: 11/19/2008
SCALE: 1" = 200' PRIOR INSTRUMENT: DV 1257/374