

RASTER

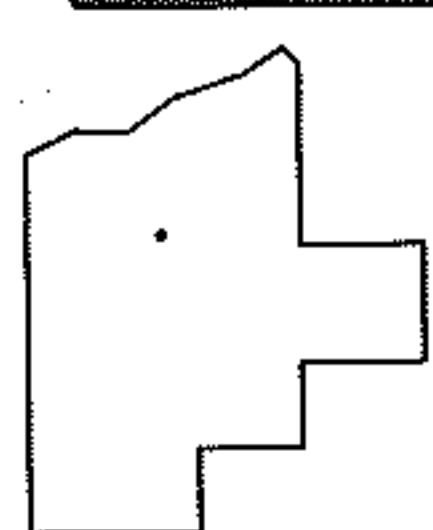
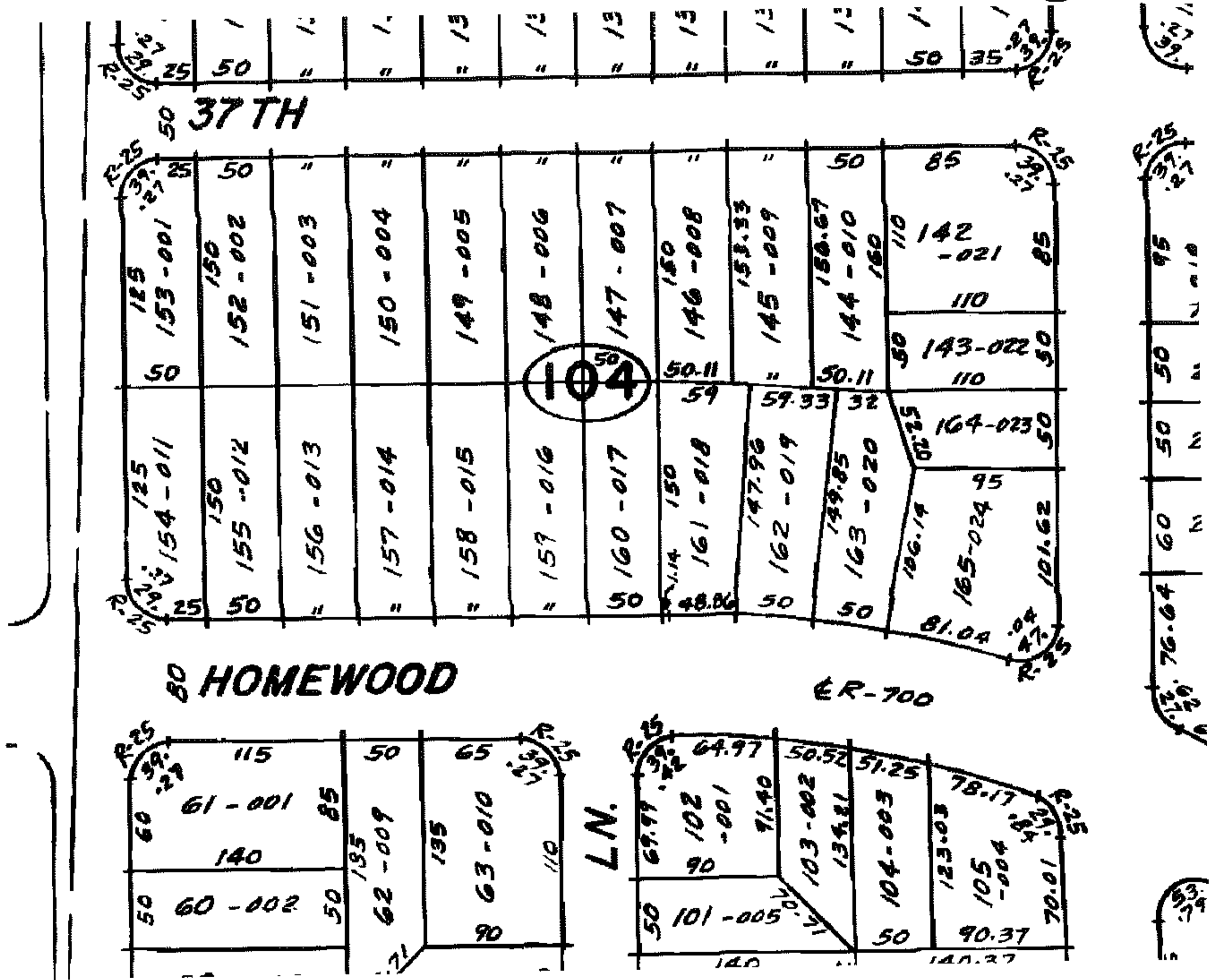
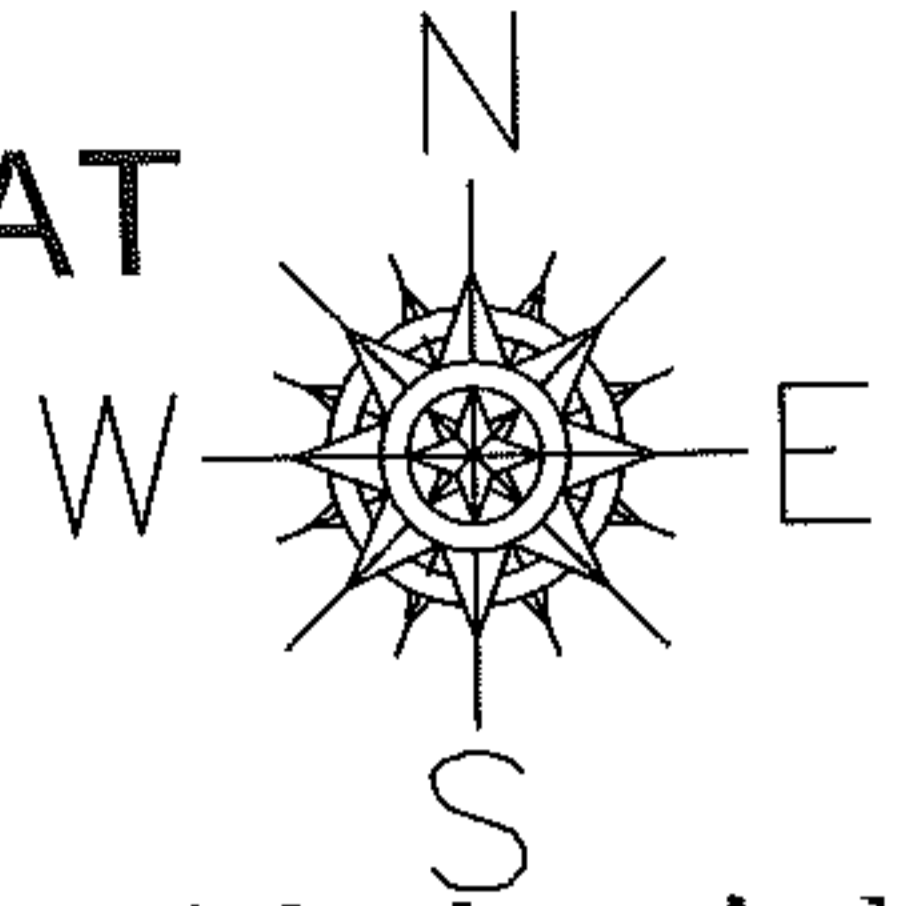
PARENT PARCEL: 03-00-080-104-008

08-01717-D

CHILD PARCEL: --SAME--

ARTING POINT: SUBLOT 146 IN HOMEWOOD ADDITION PV 14/22-23

# DEPTH CORR PER DEED, MAP & PLAT NO MAP CORR



## SPLITS/DEEDS PROCESSED

LORAIN COUNTY TAX MAP DEPARTMENT  
226 MIDDLE AVE. ELYRIA, OHIO

SURVEYED BY: N/A

CLOSURE: N/A

MAP PAGE(S): 03-00-079-A

APPROVED BY: DRH DATE: 12/2/2008

SCALE: NOT TO SCALE PRIOR INST.: 20040980783