

RASTER

PARENT PARCEL: 03-00-041-102-002, -003, -006

CHILD PARCEL: 03-00-041-102-007

NO. 08-01715-X

STARTING POINT: I.P., SOUTH LINE OF LAKE RD. & BETWEEN S/L 9 & S/L 10

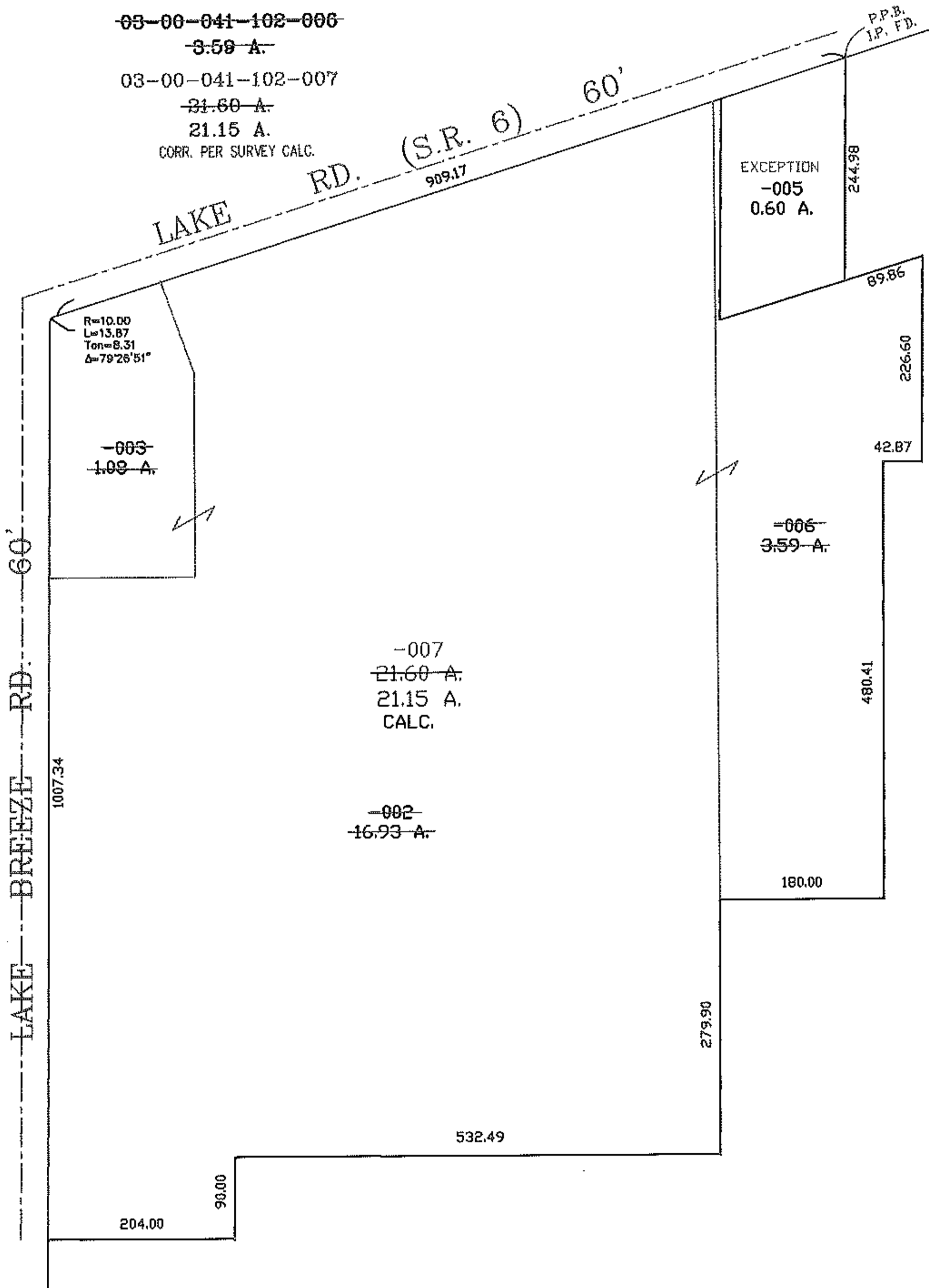
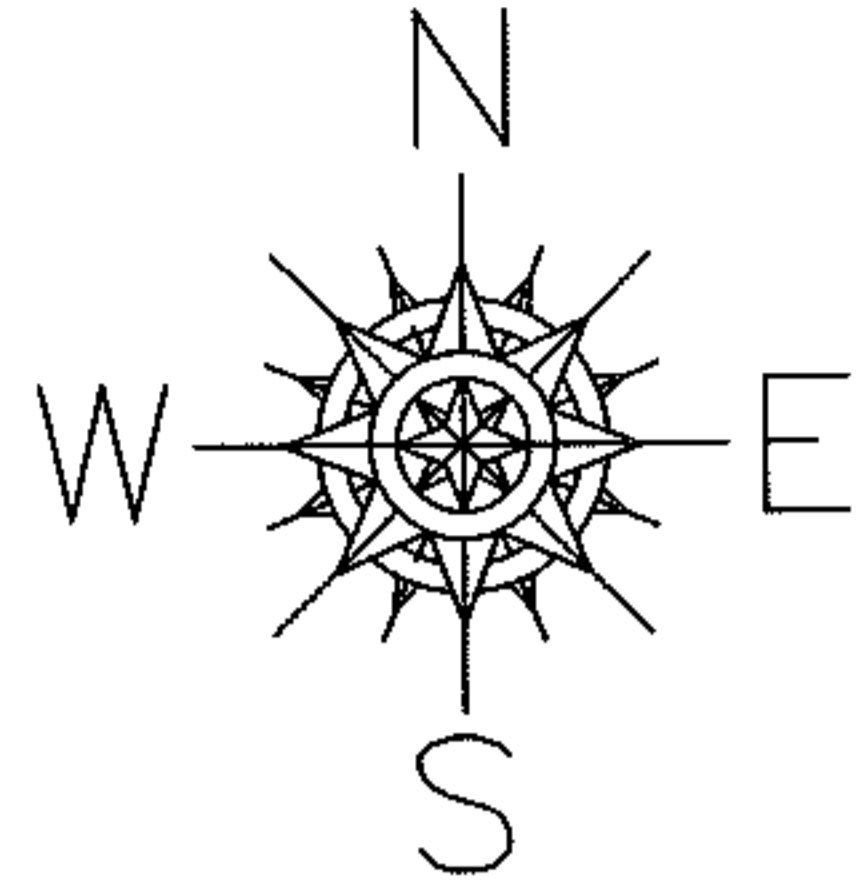
COMBINATION PER DEED

~~03-00-041-102-002~~
~~16.93 A.~~

~~03-00-041-102-003~~
~~1.08 A.~~

~~03-00-041-102-006~~
~~3.59 A.~~

03-00-041-102-007
~~21.60 A.~~
21.15 A.
CORR. PER SURVEY CALC.



SPLITS/DEEDS PROCESSED

LORAIN COUNTY TAX MAP DEPARTMENT
226 MIDDLE AVE. ELYRIA, OHIO

SURVEYED BY: RAY E. HOLLIS

CLOSURE: 0.01 : 10,000

MAP PAGE(S): 03-00-041

APPROVED BY: TJS DATE: 11/19/08

SCALE: 1" = 200 PRIOR INSTRUMENT: DV 709/229