

RASTER

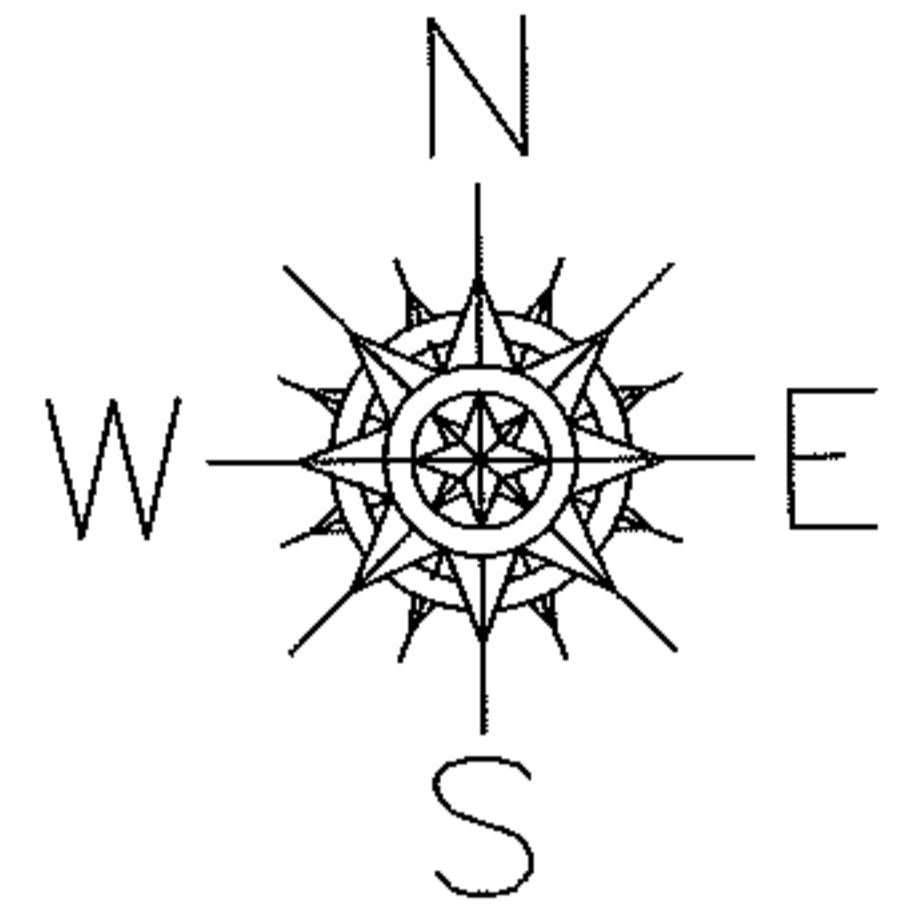
PARENT PARCEL: 09-00-096-105-018

CHILD PARCEL: --SAME--

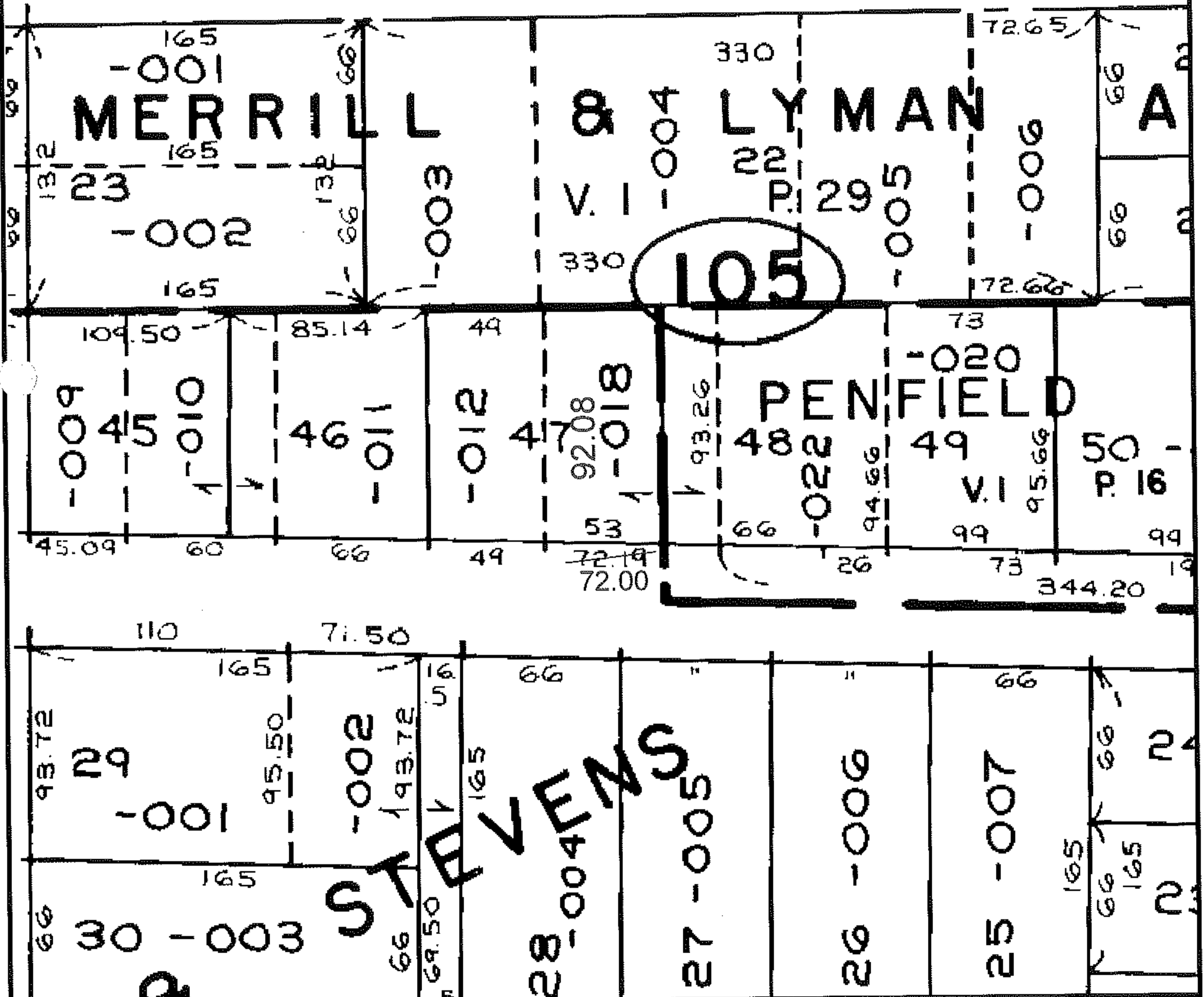
STARTING POINT: PARK ST AND LOCUST ST

08-01708-C

FRONTAGE CORR PER DEED



Map Corr Only



SPLITS/DEEDS PROCESSED

LORAIN COUNTY TAX MAP DEPARTMENT
226 MIDDLE AVE. ELYRIA, OHIO

SURVEYED BY: LAUNDON SIMON CAHL
 CLOSURE: N/A
 MAP PAGE(S): 09-00-096-A
 APPROVED BY: DRH DATE: 10/23/2008
 SCALE: NOT TO SCALE PRIOR INSTRUMENT: 20040043947