

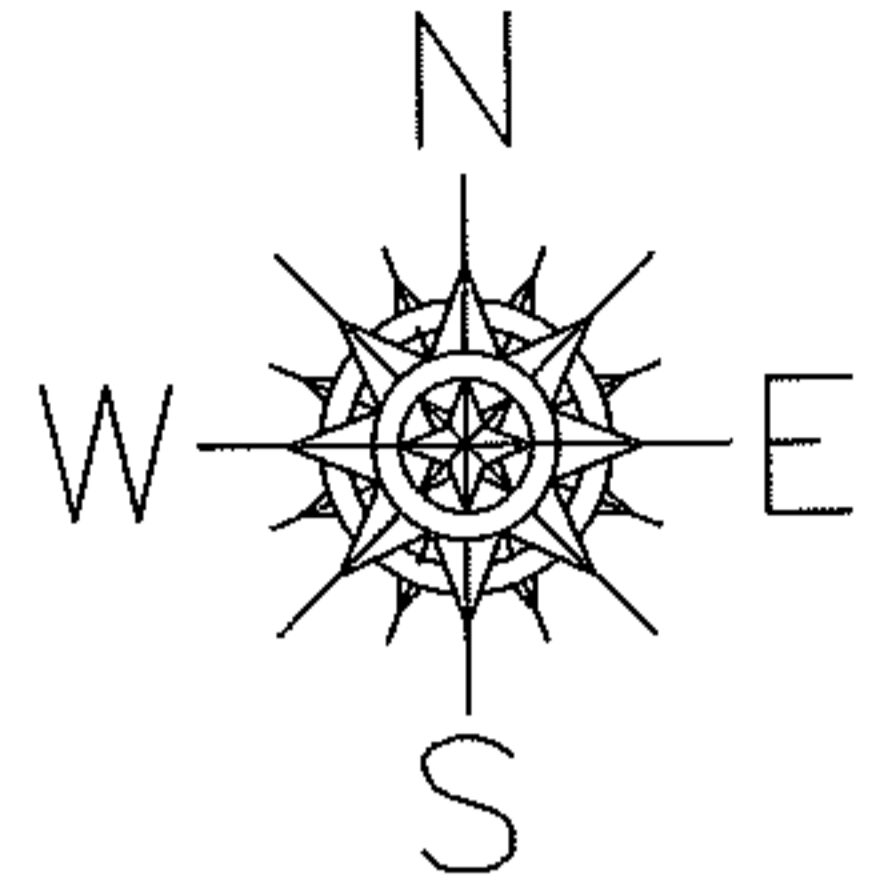
RASTER

PARENT PARCEL: 05-00-011-103-010

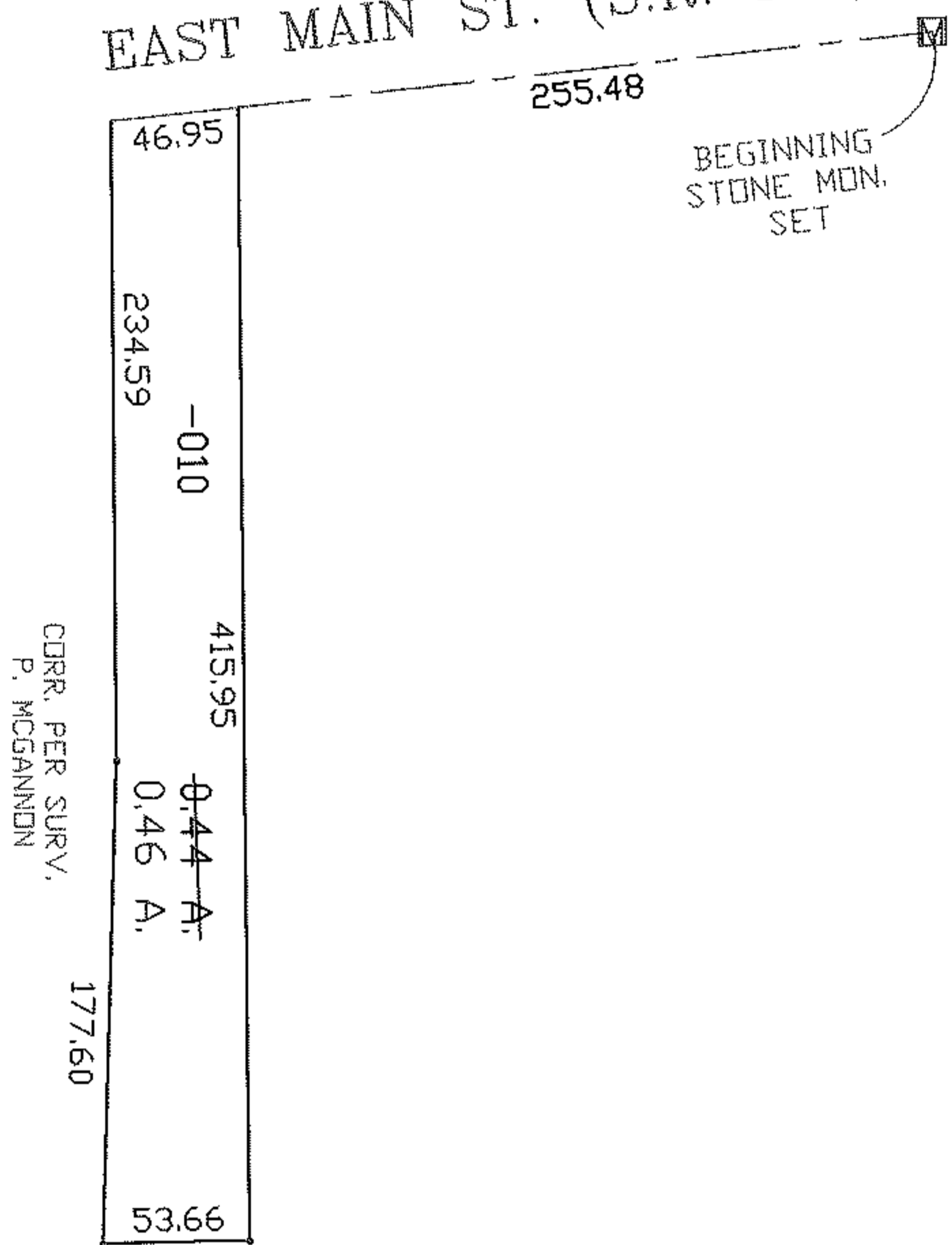
CHILD PARCEL: XX-XX-XXX-XXX-XXX

STARTING POINT: STONE MON. SET, CL OF EAST MAIN ST. & S.W. CORNER OF S. KENDEIGH'S SUB.

NO. 08-01707-C



EAST MAIN ST. (S.R. 113)



SPLITS/DEEDS PROCESSED

LORAIN COUNTY TAX MAP DEPARTMENT
226 MIDDLE AVE. ELYRIA, OHIO

SURVEYED BY: PATRICK A. MCGANNON

CLOSURE: 0.01 : 10.000

MAP PAGE(S): 05-00-011-A

APPROVED BY: TJS DATE: 10/22/08

SCALE: 1" = 100 PRIOR INSTRUMENT: 20080236354