

RASIER

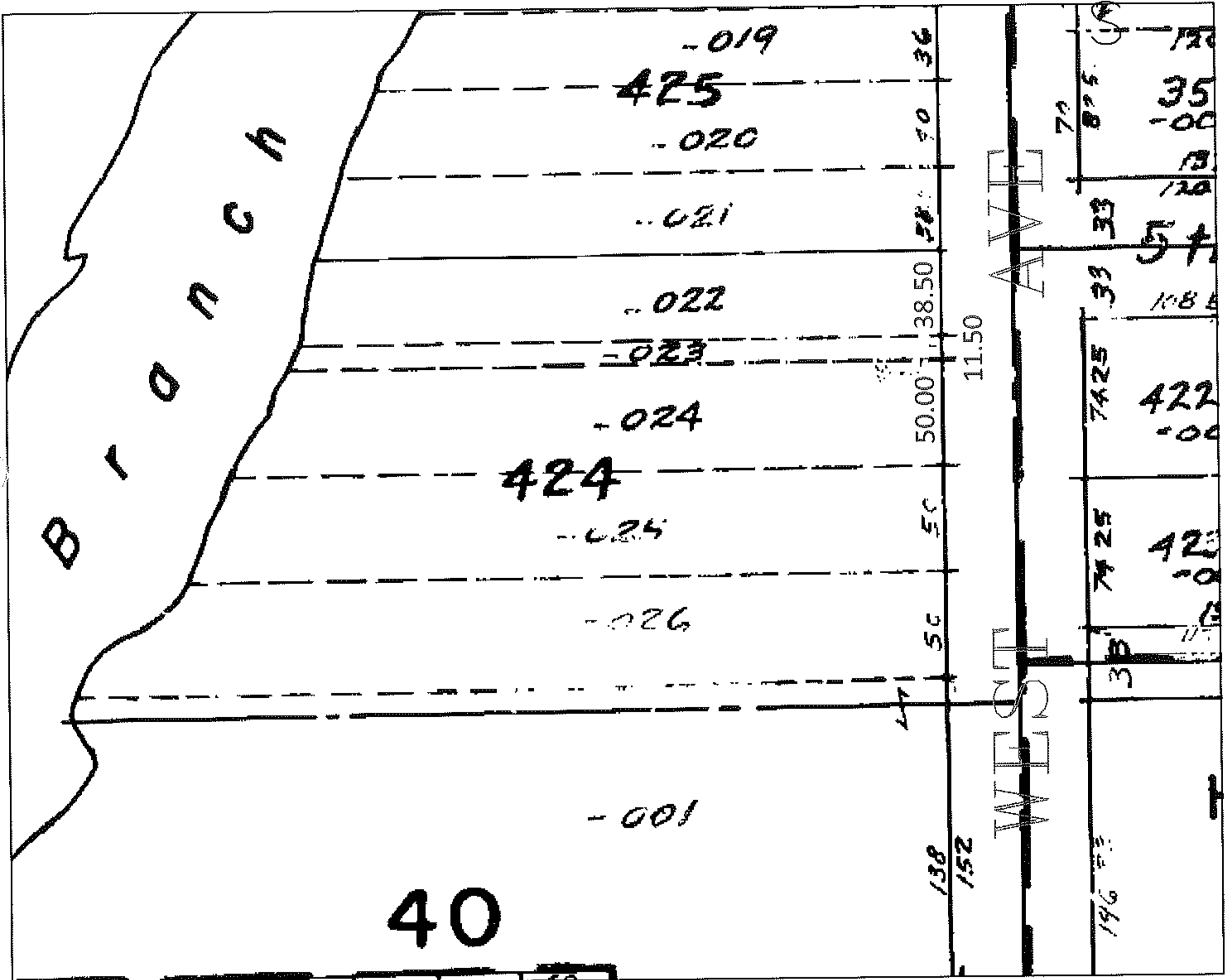
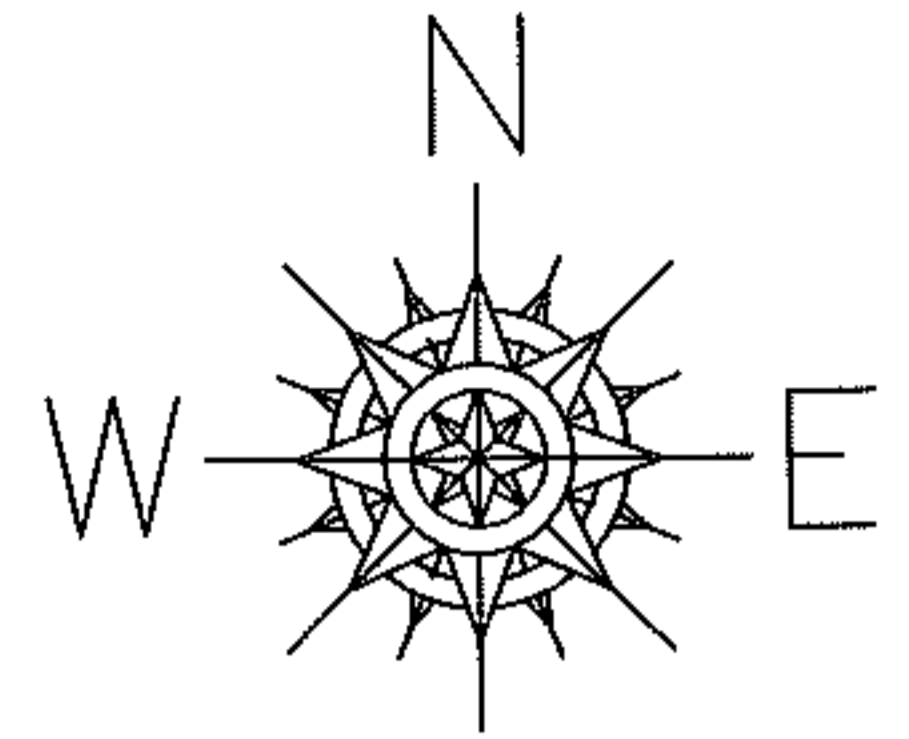
PARENT PARCEL: 06-26-041-000-023 & -024

CHILD PARCEL: --SAME--

NO. 08-01702-D

STARTING POINT: SE CORNER OF S/L 424

FRONTAGE CORR PER DEED



SPLITS/DEEDS PROCESSED

LORAIN COUNTY TAX MAP DEPARTMENT
226 MIDDLE AVE. ELYRIA, OHIO

SURVEYED BY: C.T. BIGGS

CLOSURE: N/A

MAP PAGE(S): 06-119

APPROVED BY: DRH DATE: 10/22/2008

SCALE: NOT TO SCALE PRIOR INSTRUMENT: 20000668543