

RASTER

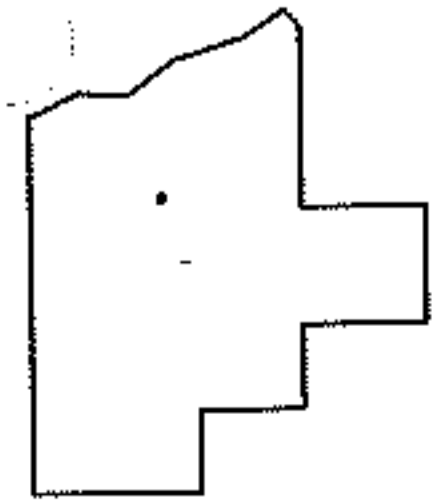
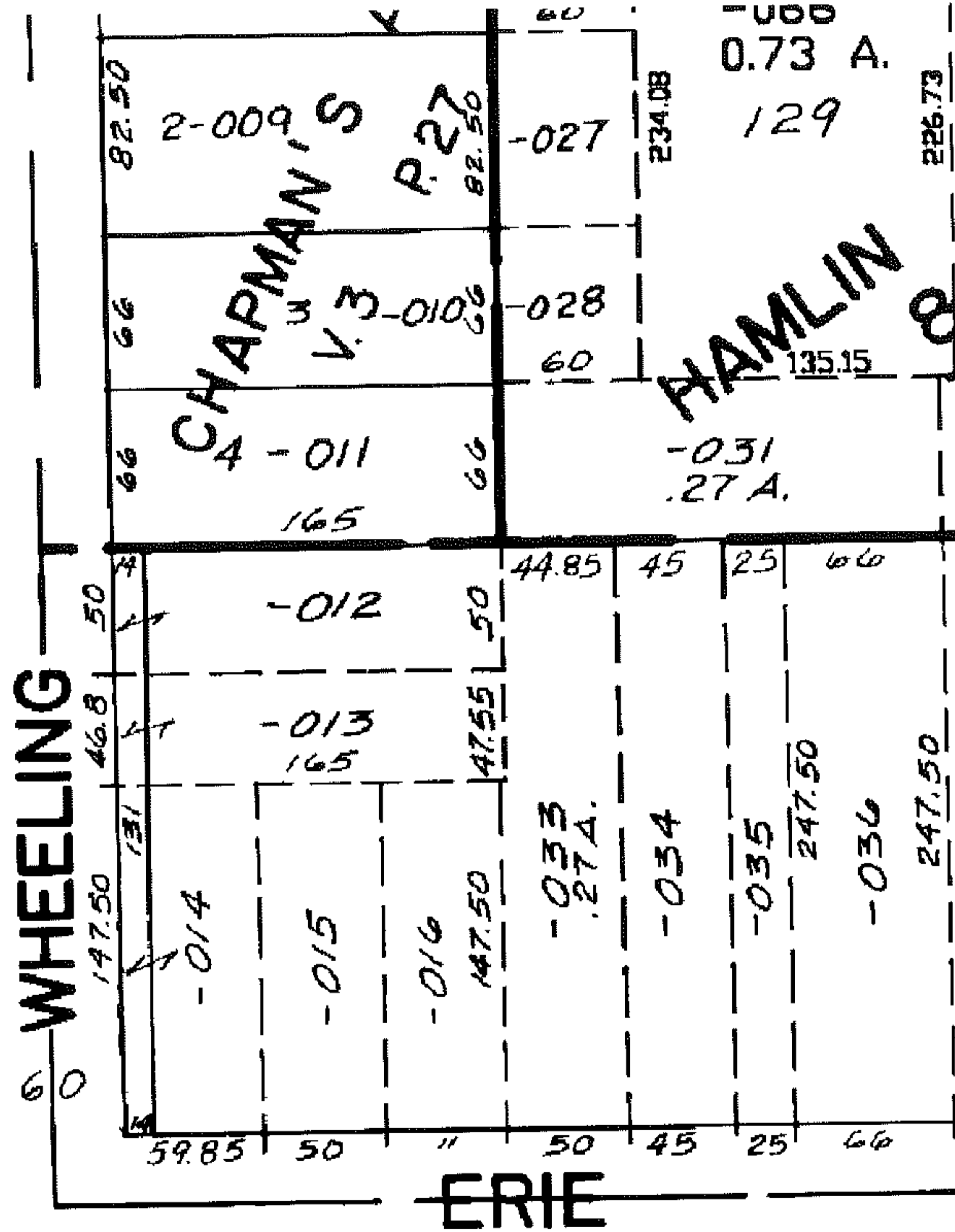
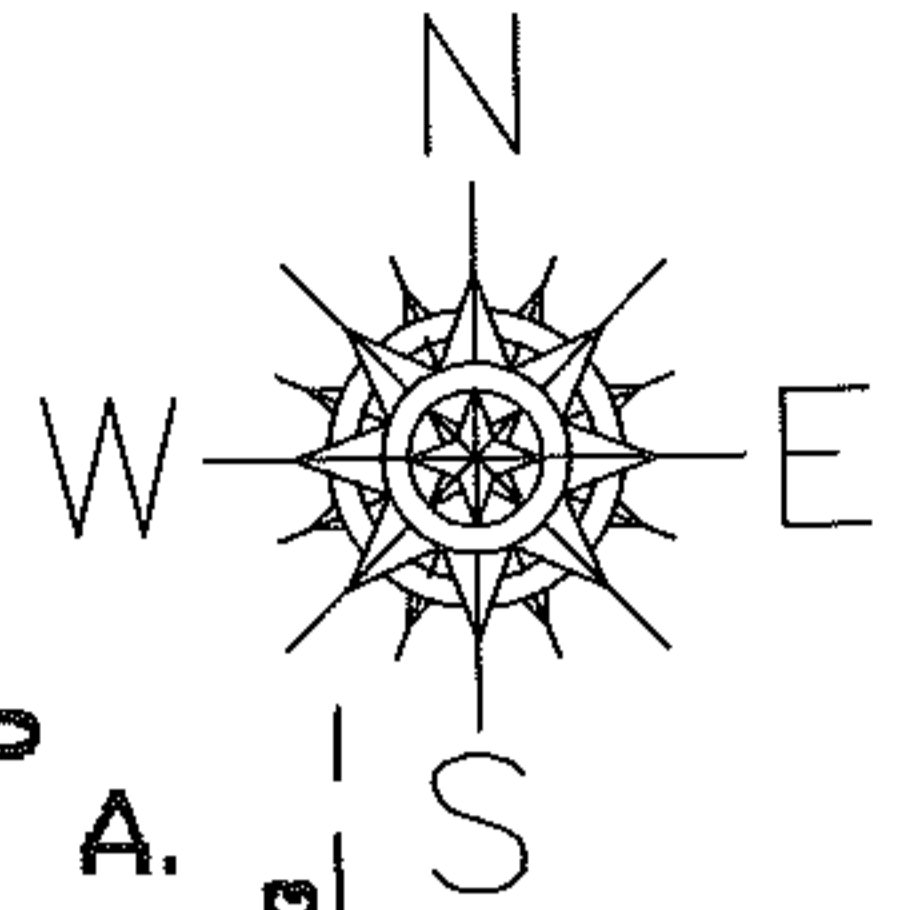
PARENT PARCEL: 18-00-027-110-016

CHILD PARCEL: --SAME--

STARTING POINT: INT WHEELING AND ERIE

08-01700-C

DUPLICATE CORRECTION  
NO MAP CORRECTION



SPLITS/DEEDS PROCESSED

LORAIN COUNTY TAX MAP DEPARTMENT  
226 MIDDLE AVE. ELYRIA, OHIO

SURVEYED BY: N/A

CLOSURE: N/A

MAP PAGE(S): 18-00-027-B

APPROVED BY: DRH DATE: 10/7/2008

SCALE: NOT TO SCALE PRIOR INSTRUMENT: 20060133388