

RASTER

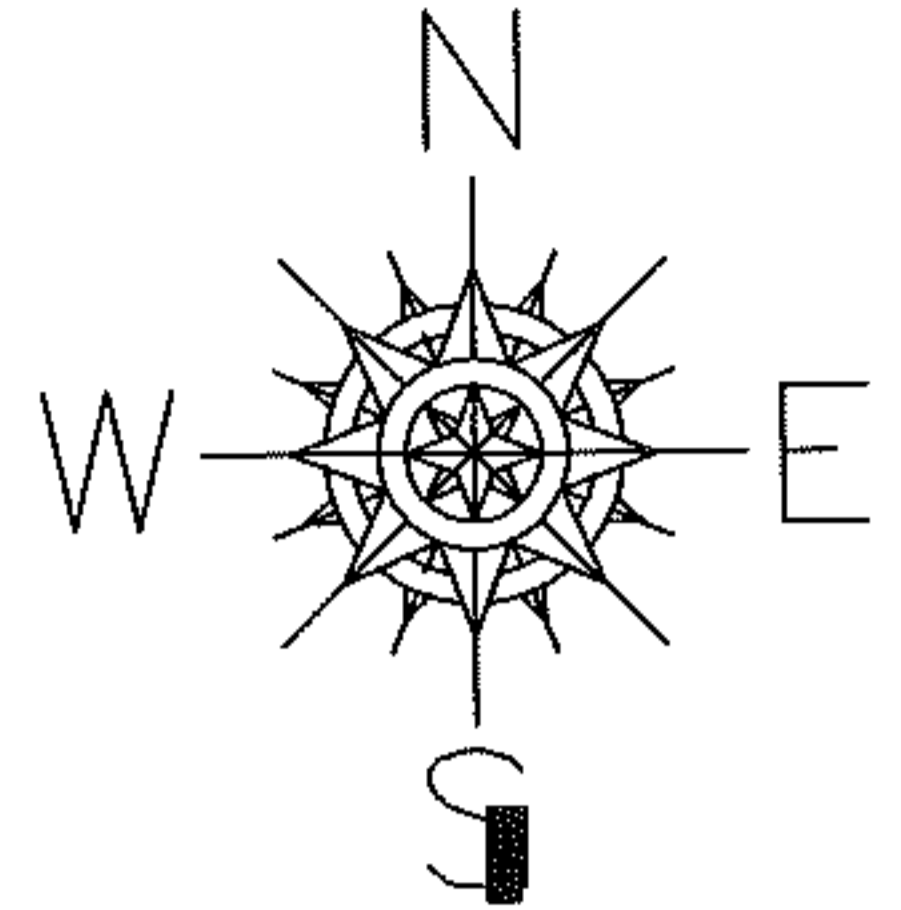
PARENT PARCEL: 03-00-037-102-004

CHILD PARCEL: --SAME--

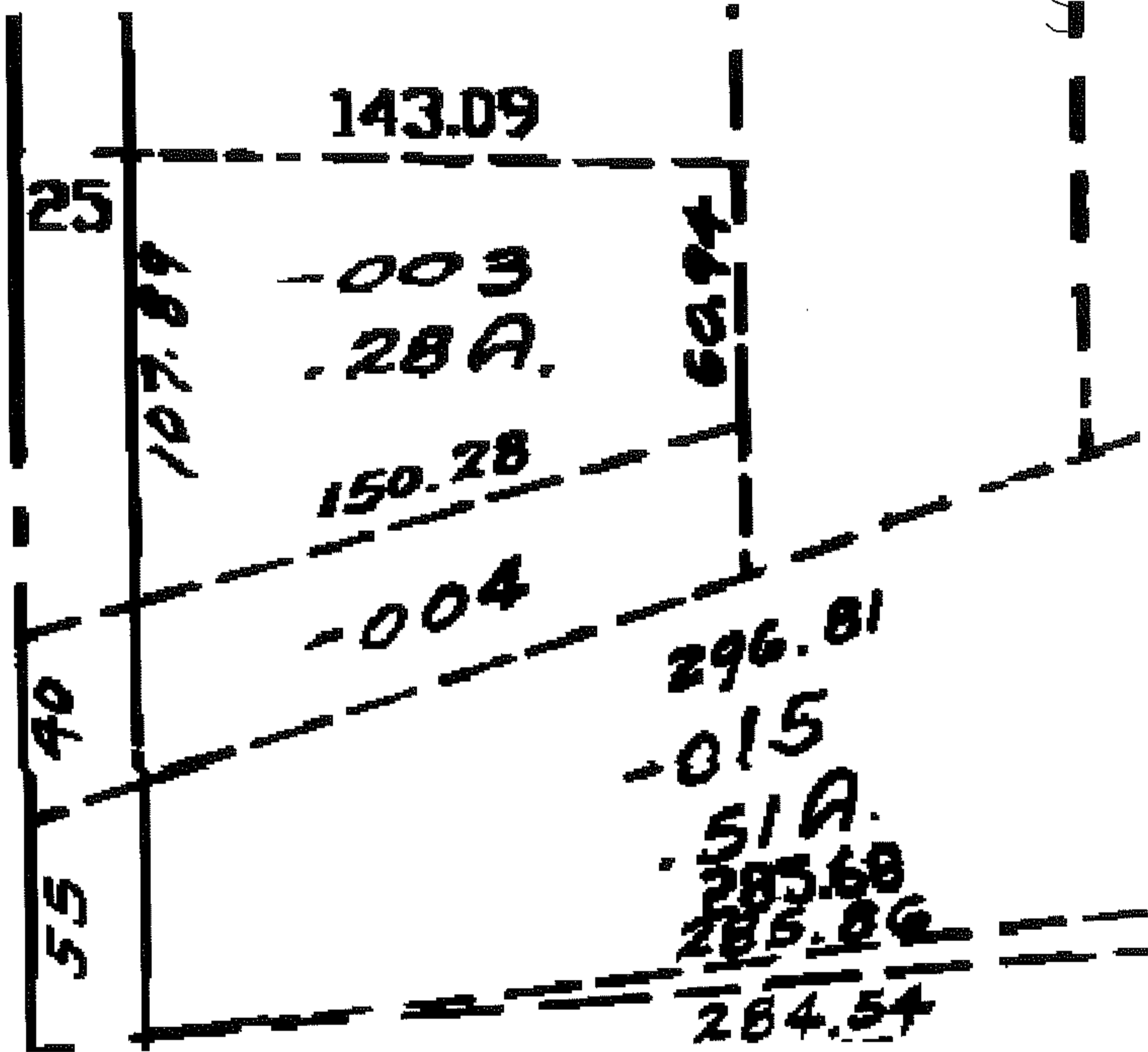
STARTING POINT: XXXXXX

08-01693-C

# DEPTH CORR PER DEED AND MAP NO MAP CORR



038-A



### SPLITS/DEEDS PROCESSED

LORAIN COUNTY TAX MAP DEPARTMENT  
226 MIDDLE AVE. ELYRIA, OHIO

SURVEYED BY: N/A

CLOSURE: N/A

MAP PAGE(S): 03-00-037-A

APPROVED BY: DRH DATE: 11/3/2008

SCALE: NOT TO SCALE PRIOR INST.: 20020872378