

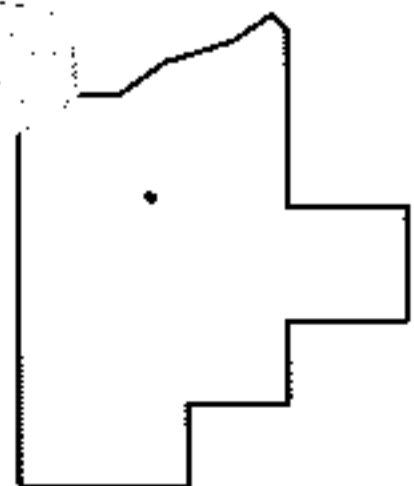
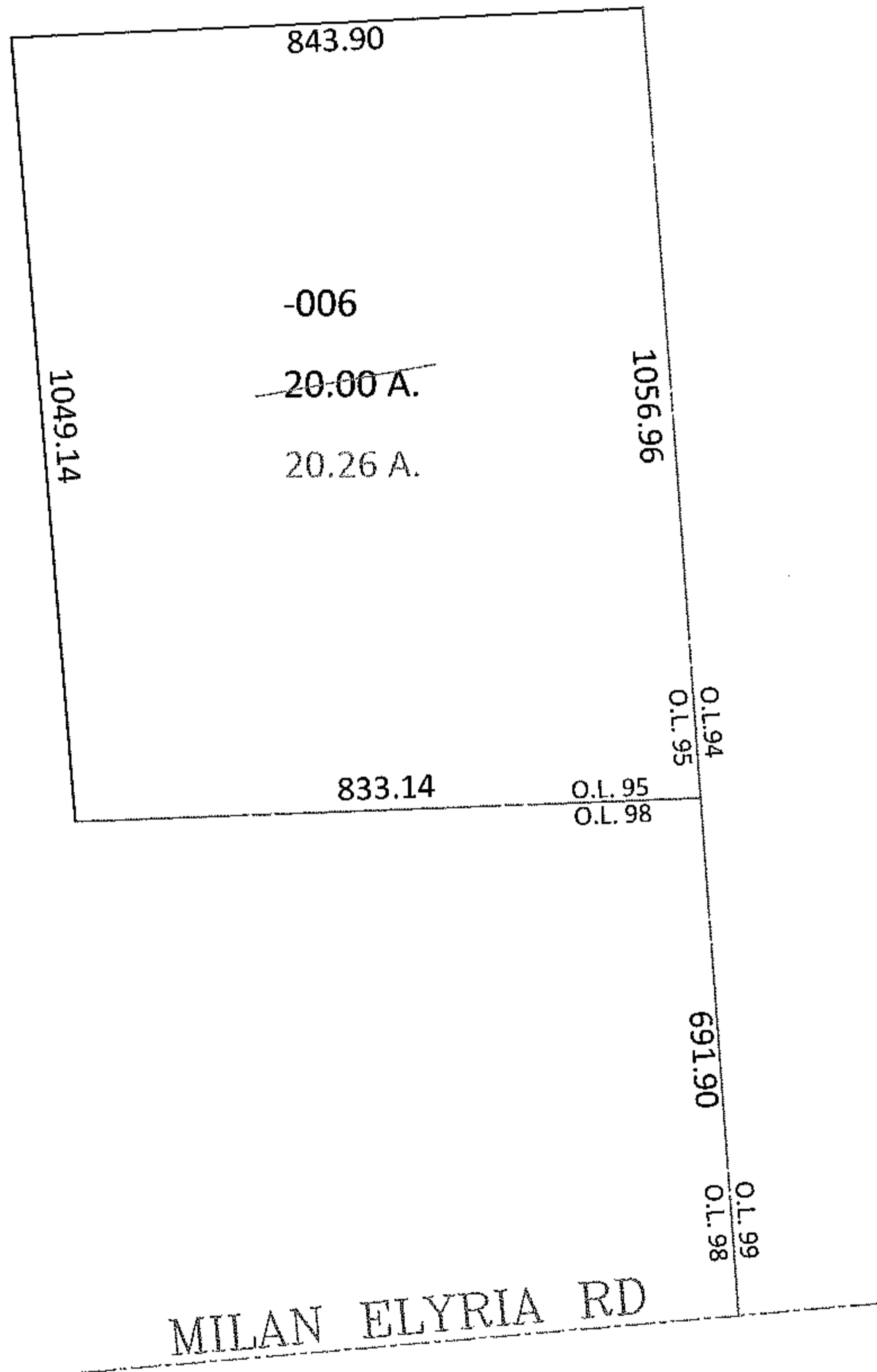
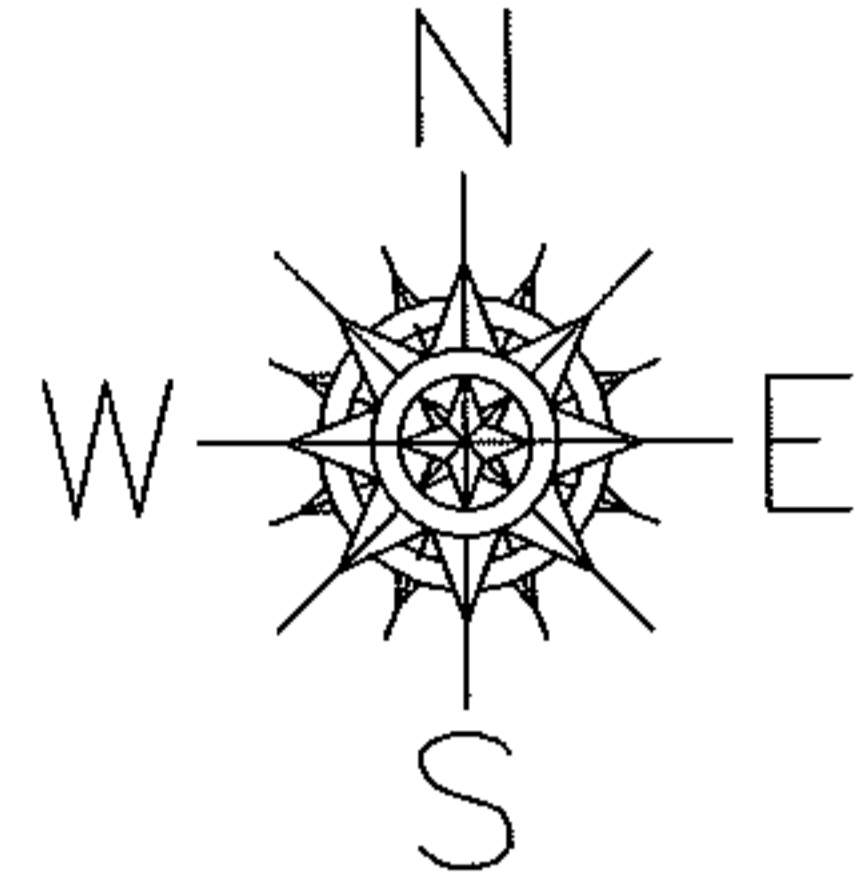
RASTER

PARENT PARCEL: 08-00-095-000-006

CHILD PARCEL: --SAME--

STARTING POINT: INT CL MILAN ELYRIA RD AND E LINE OF O.L. 98

08-01692-C



SPLITS/DEEDS PROCESSED
 LORAIN COUNTY TAX MAP DEPARTMENT
 226 MIDDLE AVE. ELYRIA, OHIO

SURVEYED BY: EDWARD P. DUDLEY
 CLOSURE: 1:10,000
 MAP PAGE(S): 08-A
 APPROVED BY: DRH DATE: 9/22/2008
 SCALE: 1" = 300 PRIOR INSTRUMENT: 20060120941