

RASTER

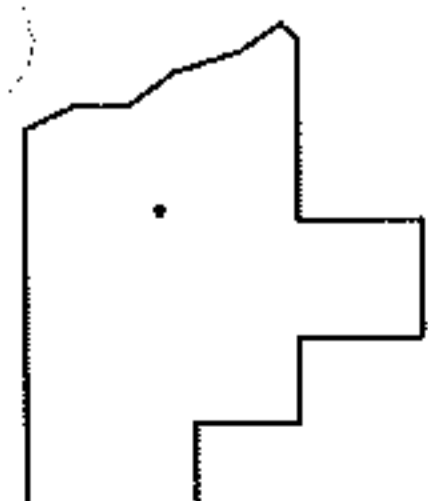
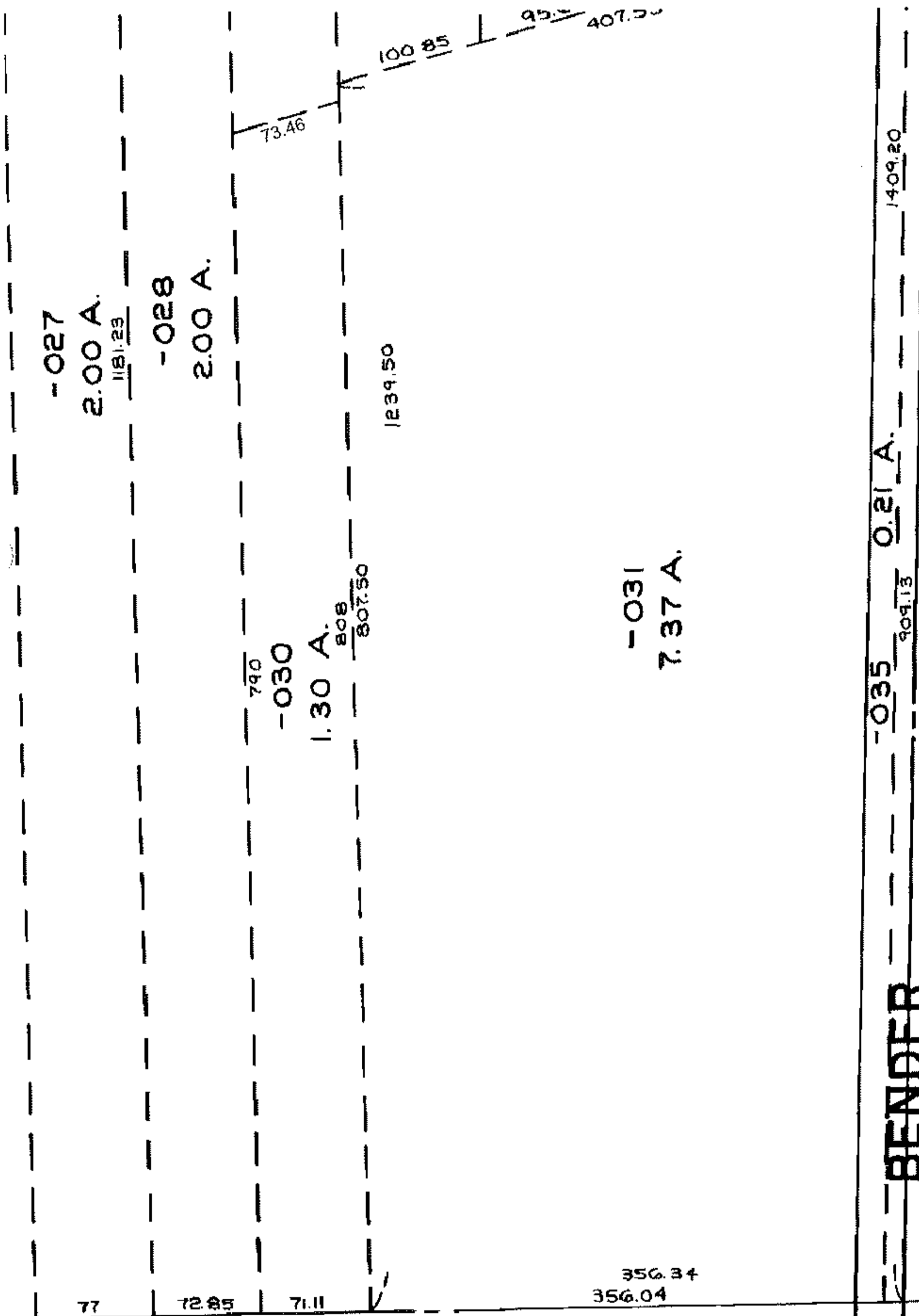
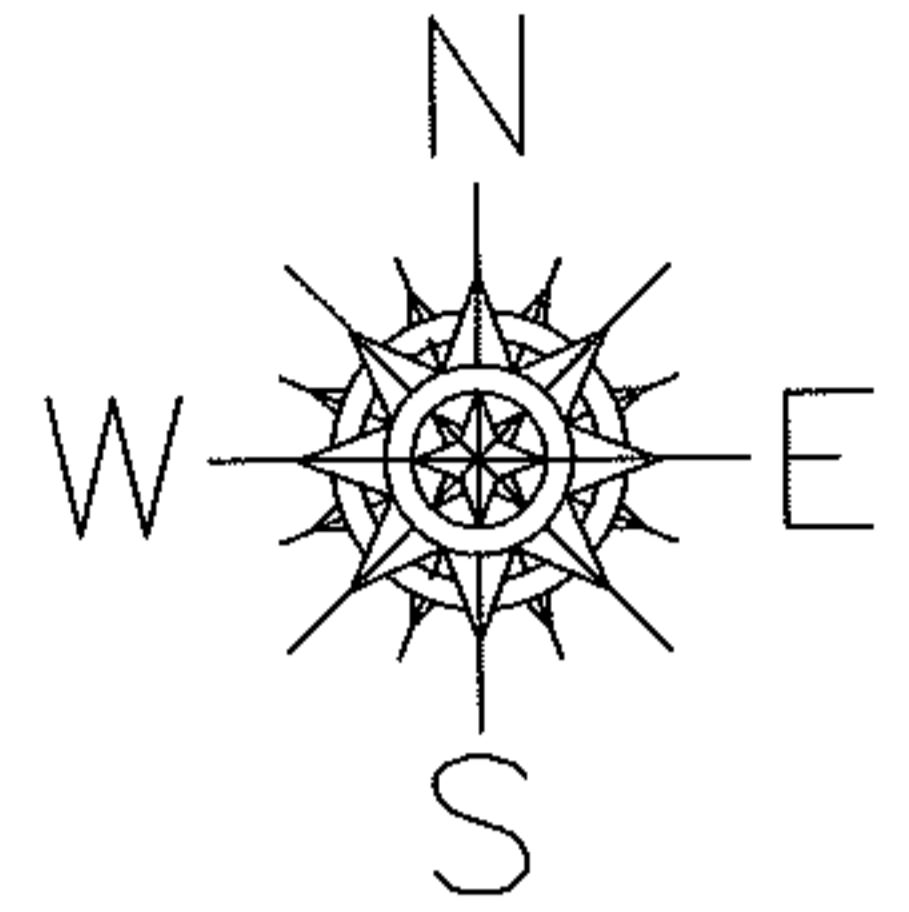
PARENT PARCEL: 07-00-047-000-030

CHILD PARCEL: --SAME--

08-01686-C

STARTING POINT:

MAP CORR PER DEED



SPLITS/DEEDS PROCESSED

LORAIN COUNTY TAX MAP DEPARTMENT
226 MIDDLE AVE. ELYRIA, OHIO

SURVEYED BY: C.T. BIGGS

CLOSURE: N/A

MAP PAGE(S): 07-00-047-D

APPROVED BY: DRH DATE: 11/3/2008

SCALE: NOT TO SCALE PRIOR INST.: 20080260602